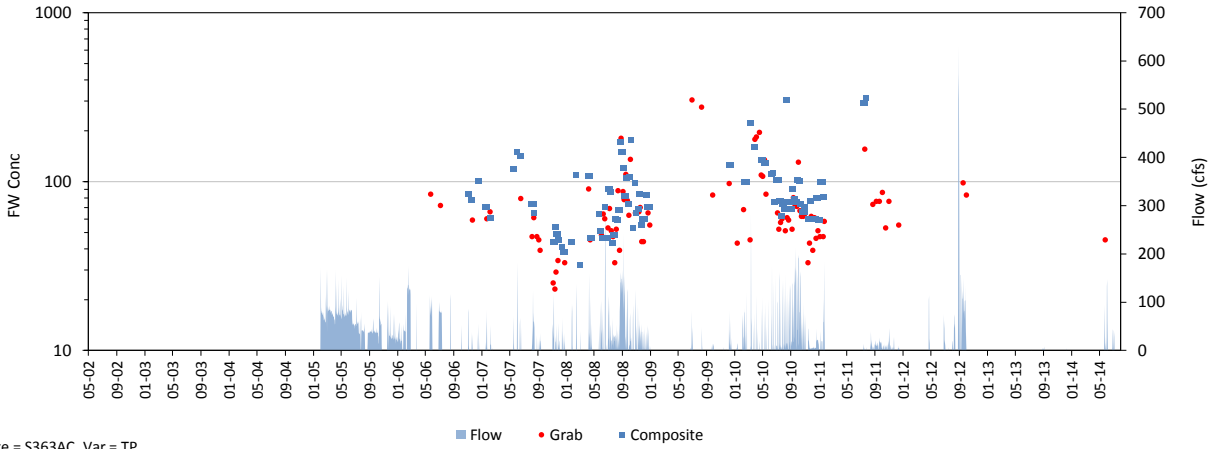
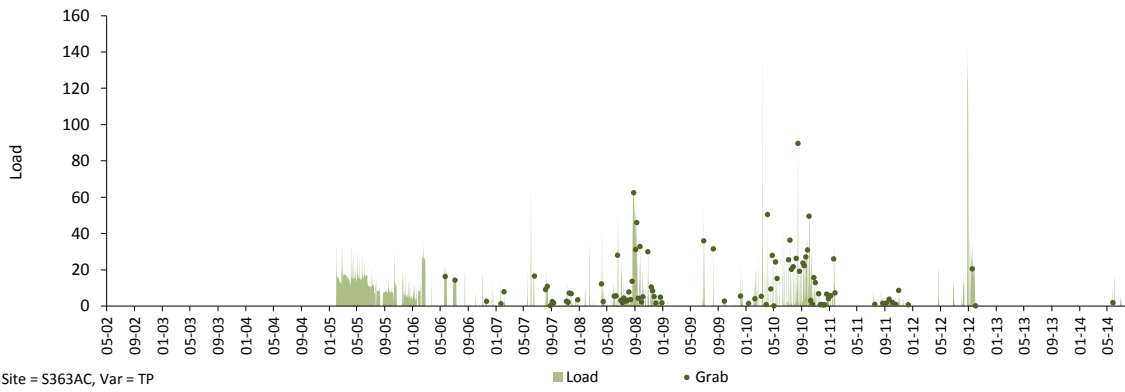


Daily Time Series

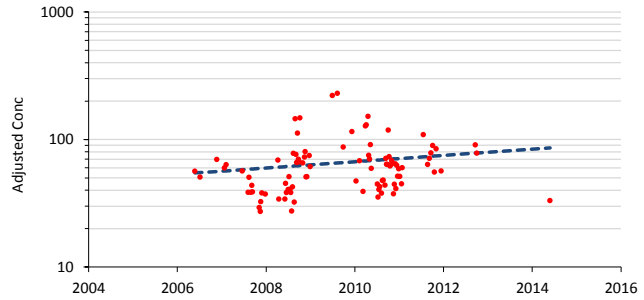
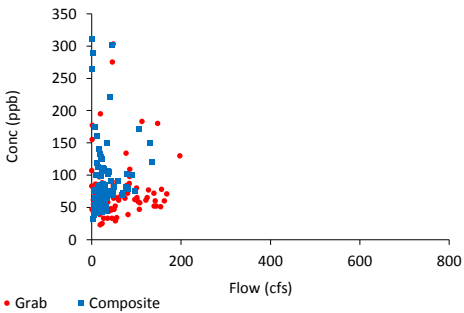
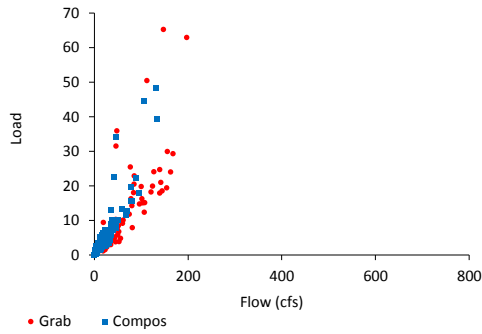
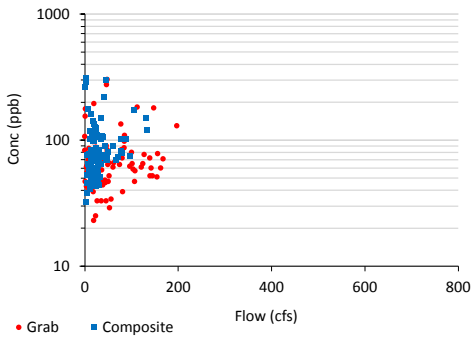
Variable: TP      Dates: 05/01/02 thru 07/31/14  
 Site: S363AC      Grabs: S363C      Compos: S363C      Flows: S363AC  
 Mean Flow: 12 cfs      FWM Conc: 89.8 ppb      Mean Load: 2.7 kg/day



Site = S363AC, Var = TP



Site = S363AC, Var = TP

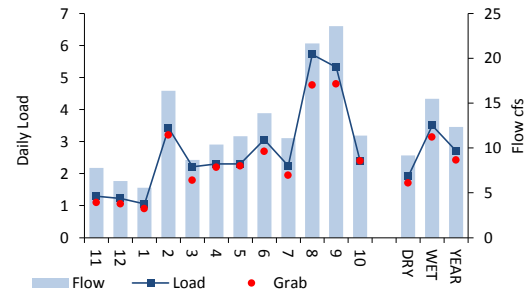
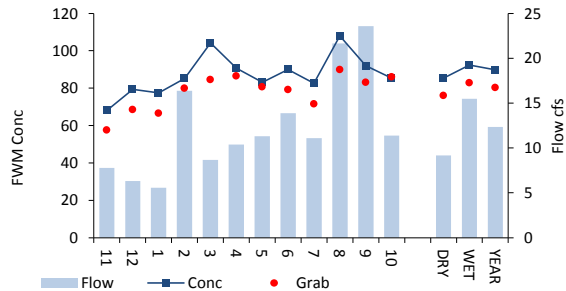
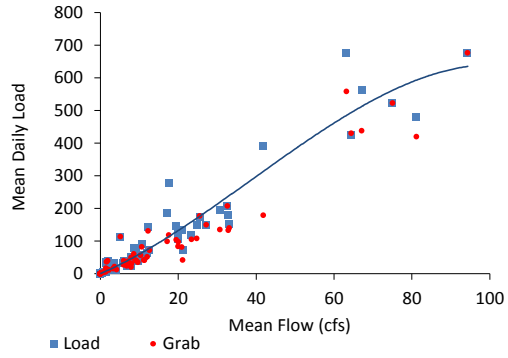
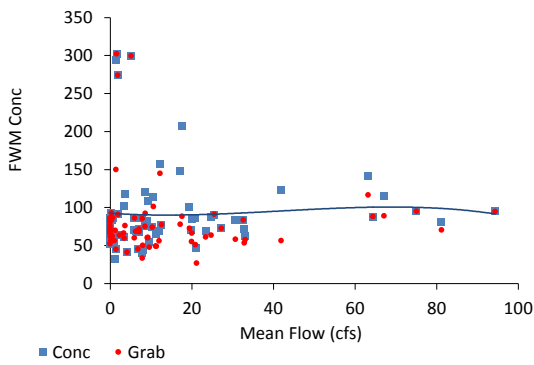
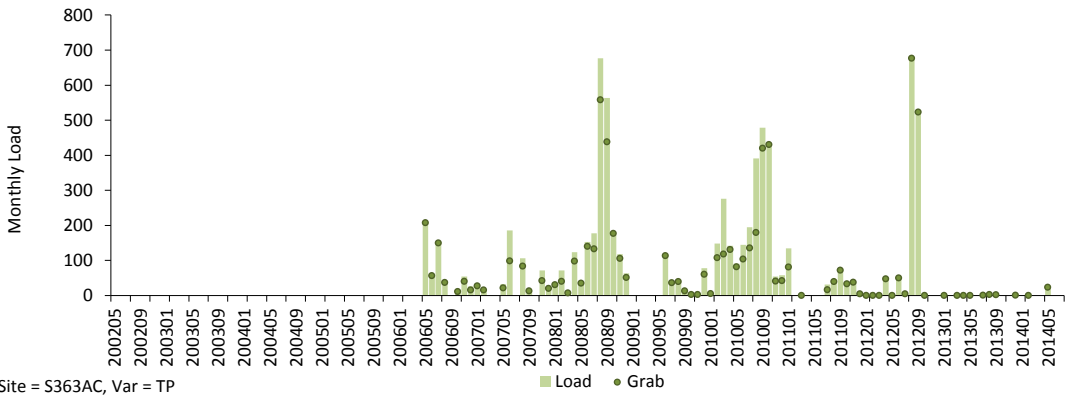
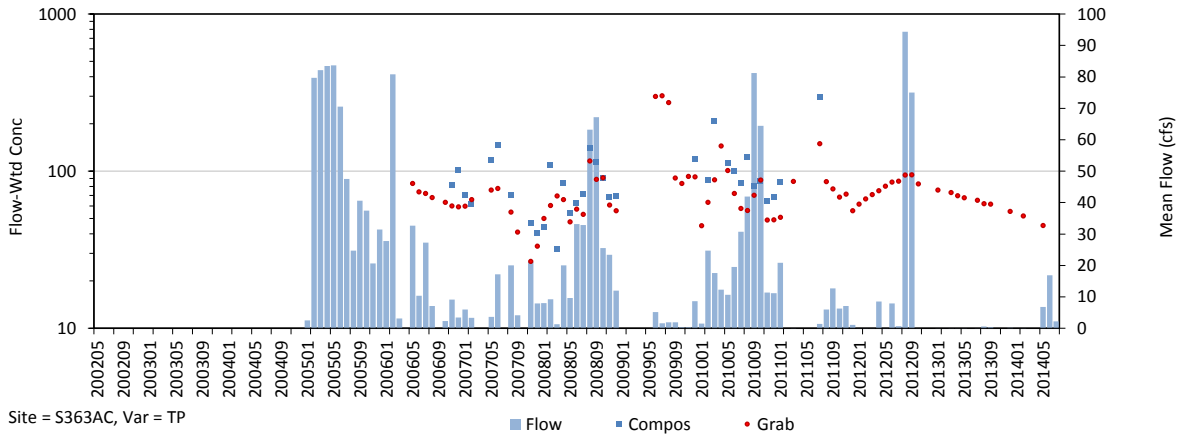


Trend in Grab Concs, Adjusted for Flow & Seasonal Variations

Trend = 5.7 % / yr,  $p = 0.081$

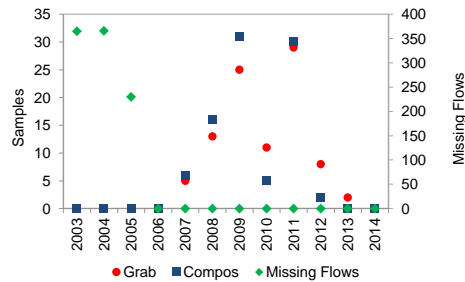
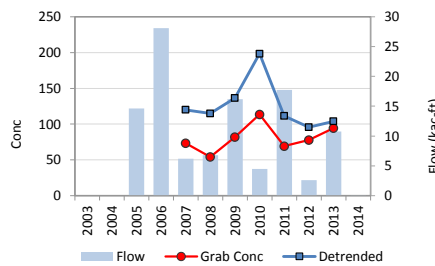
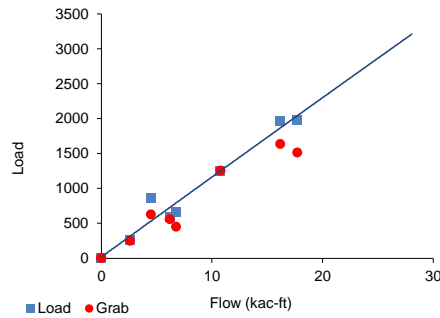
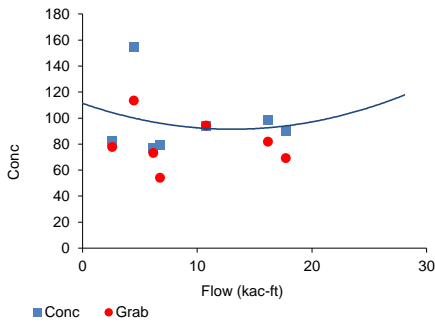
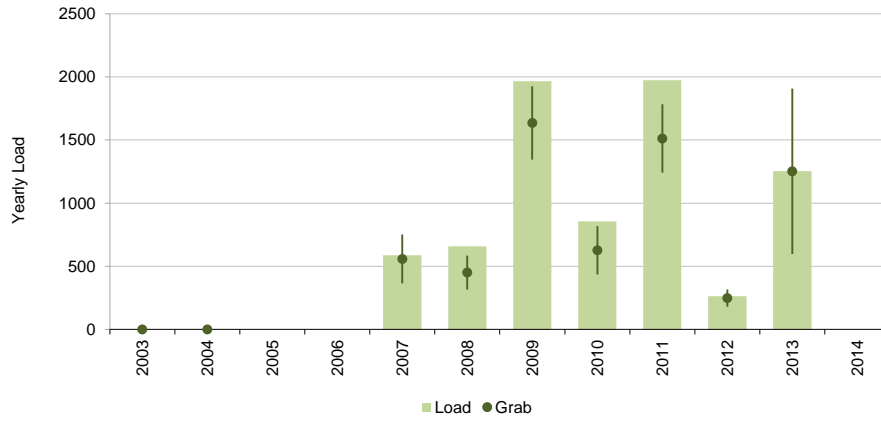
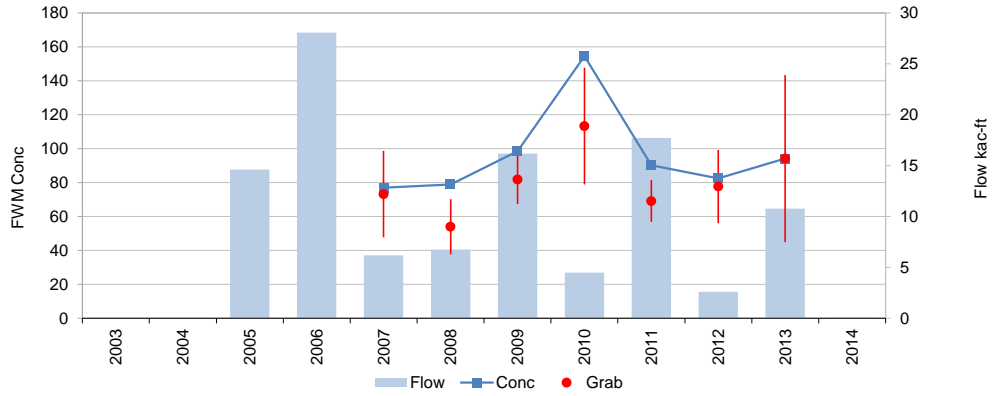
# Monthly Time Series

Variable: TP      Dates: 05/01/02 thru 07/31/14  
 Site: S363AC      Grabs: S363C      Compos: S363C      Flows: S363AC  
 Mean Flow: 12.3 cfs      FWM Conc: 89.8 ppb      Mean Load: 2.7 kg/day



Yearly Time Series

Variable: TP      Dates: 05/01/02 thru 07/31/14  
 Site: S363AC      Grabs: S363C      Compos: S363C      Flows: S363AC  
 Mean Flow: 9 kac-ft/yr      FWM Conc: 89.8 ppb      Mean Load: 985 kg / yr



Trend = 5.7 % / yr, p = 0.081

	Samples	FWM	Std Error	Grab/Composite Ratio
Grabs	94	80.3	6.1	Integrated 0.89
Compos+Grabs	90	89.8	6.8	Paired Samp 0.76