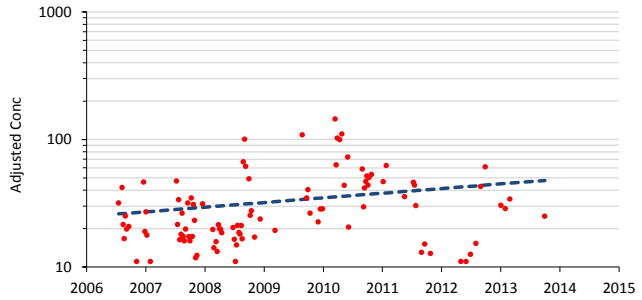
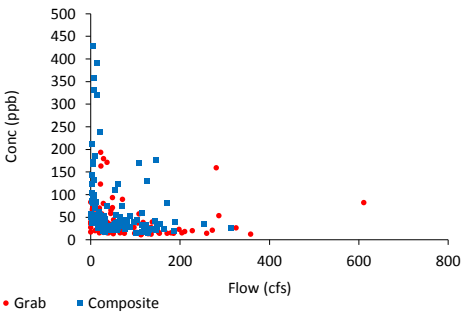
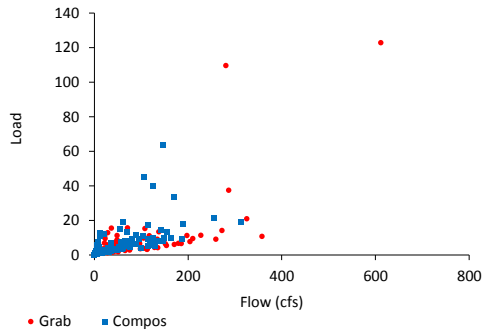
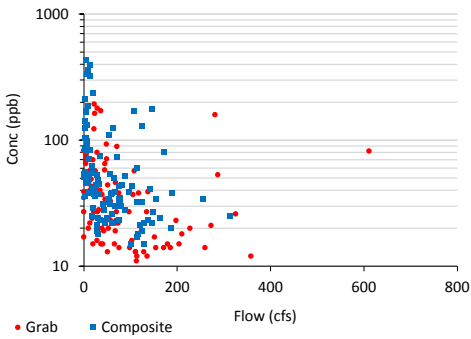
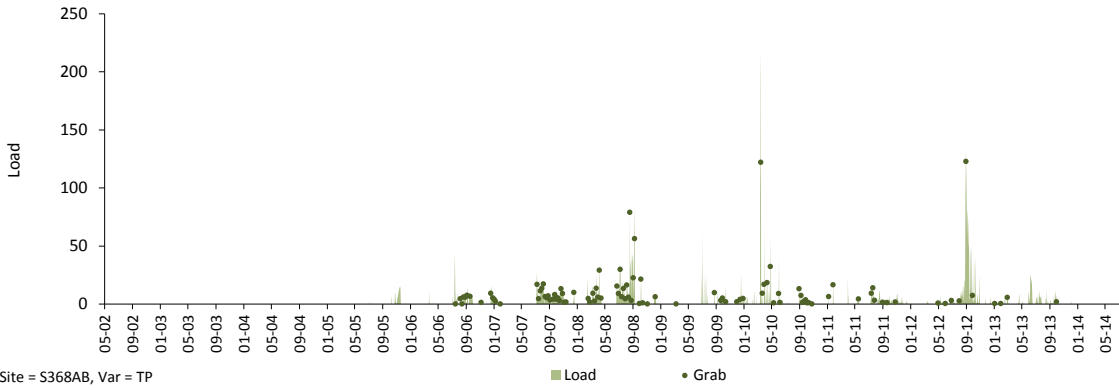
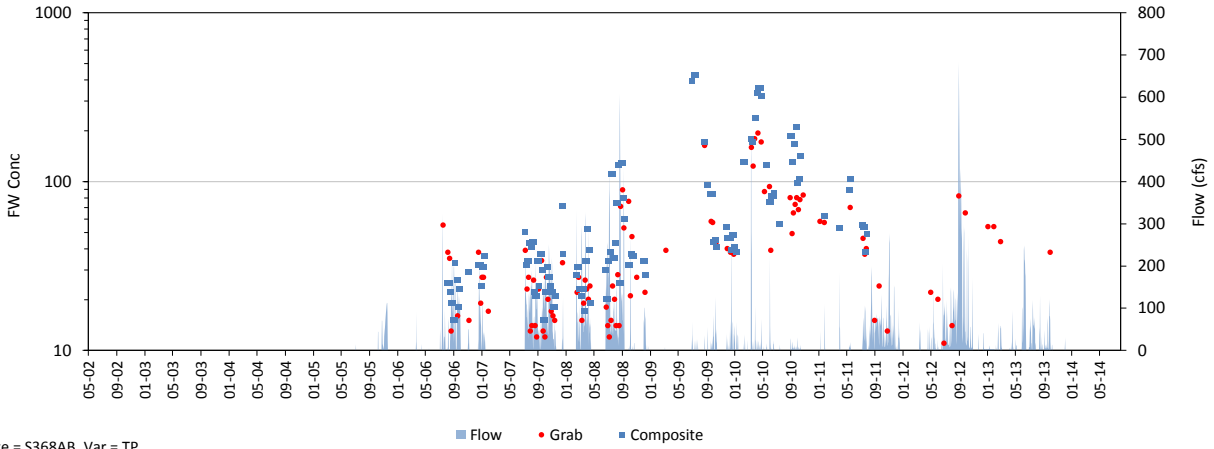


Daily Time Series

Variable: TP Dates: 05/01/02 thru 07/31/14
 Site: S368AB Grabs: S368B Compos: S368B Flows: S368AB
 Mean Flow: 18 cfs FWM Conc: 46.1 ppb Mean Load: 2.0 kg/day

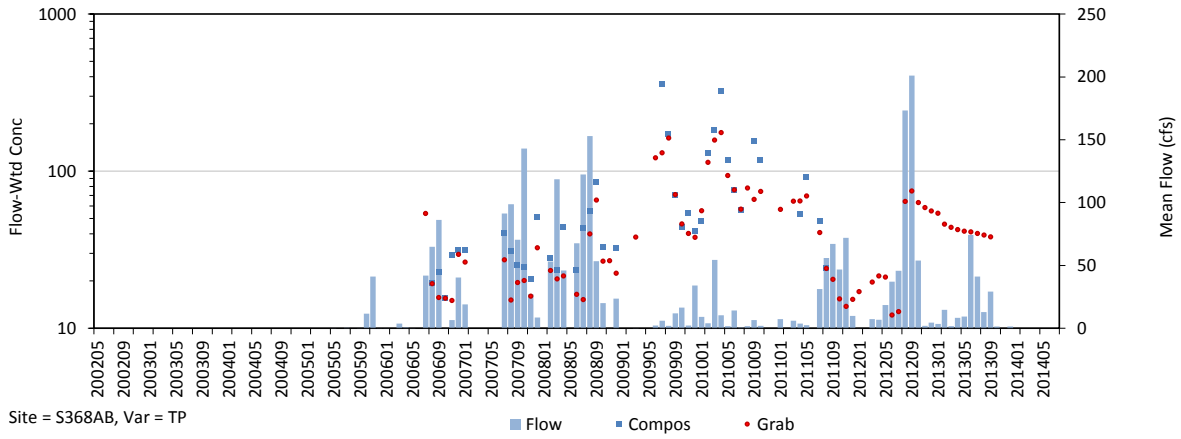


Trend in Grab Concs, Adjusted for Flow & Seasonal Variations

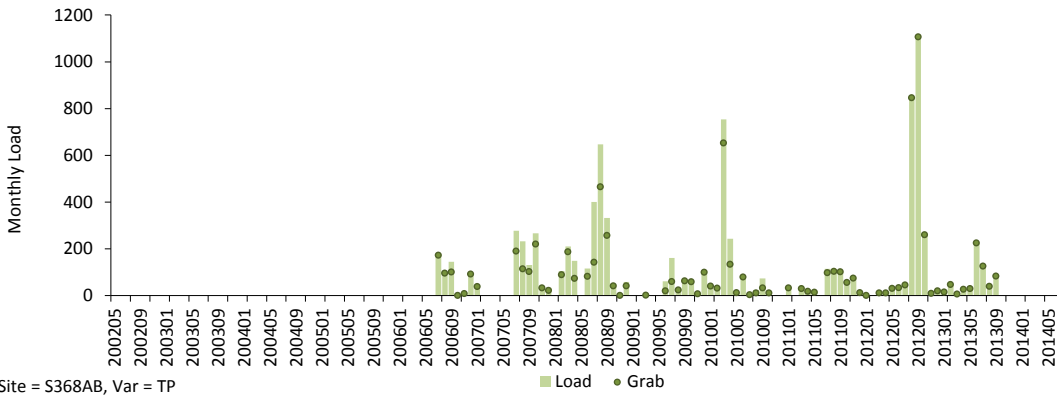
Trend = 8.4 % / yr, $p = 0.026$

Monthly Time Series

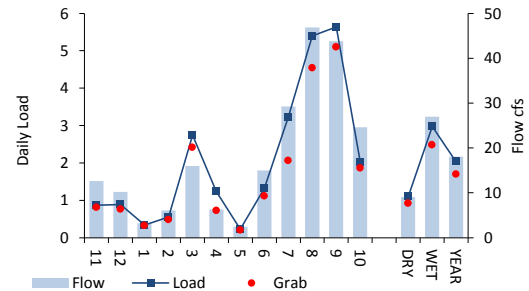
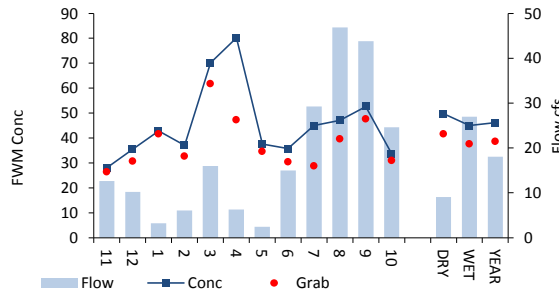
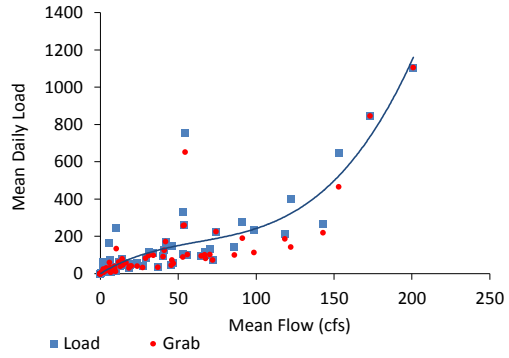
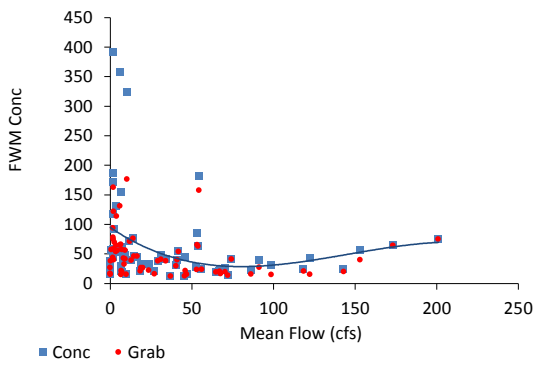
Variable: TP Dates: 05/01/02 thru 07/31/14
 Site: S368AB Grabs: S368B Compos: S368B Flows: S368AB
 Mean Flow: 18.0 cfs FWM Conc: 46.1 ppb Mean Load: 2.0 kg/day



Site = S368AB, Var = TP

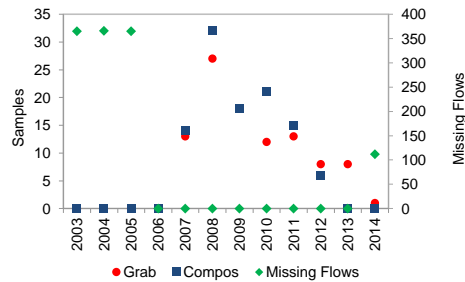
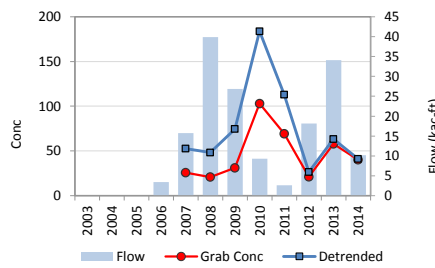
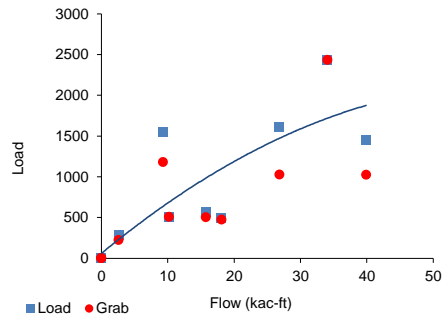
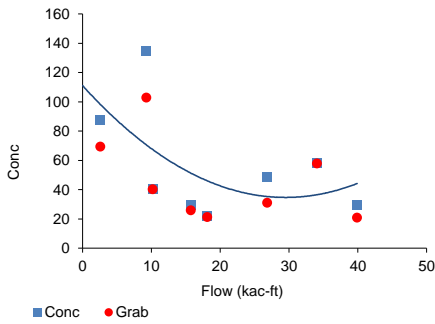
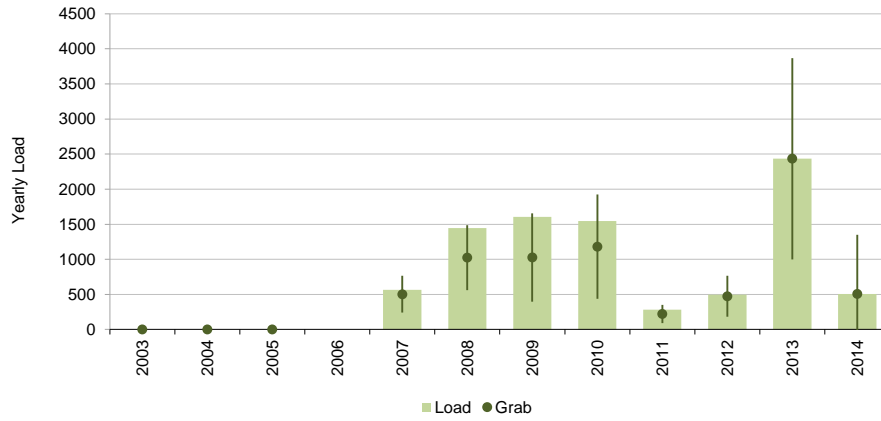
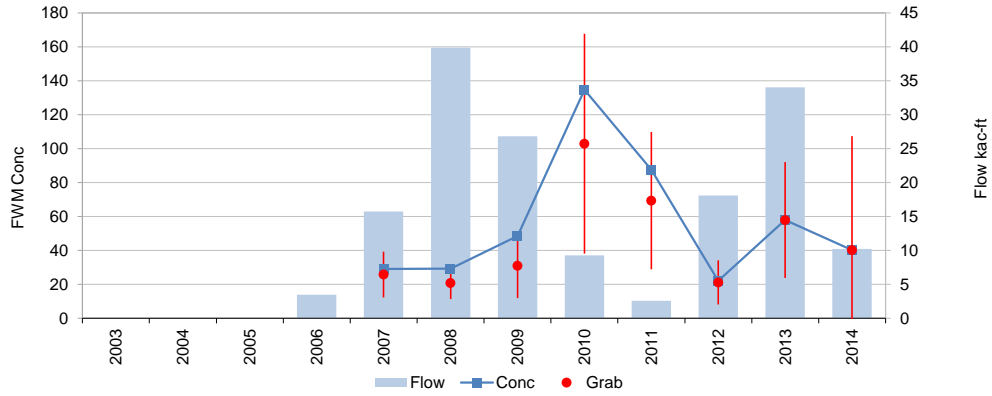


Site = S368AB, Var = TP



Yearly Time Series

Variable: TP Dates: 05/01/02 thru 07/31/14
 Site: S368AB Grabs: S368B Compos: S368B Flows: S368AB
 Mean Flow: 13 kac-ft/yr FWM Conc: 46.1 ppb Mean Load: 744 kg/yr



Trend = 8.4 % / yr, p = 0.026

	Samples	FWM	Std Error	Grab/Composite Ratio
Grabs	100	38.4	6.4	Integrated 0.83
Compos+Grabs	106	46.1	7.7	Paired Samp 0.65