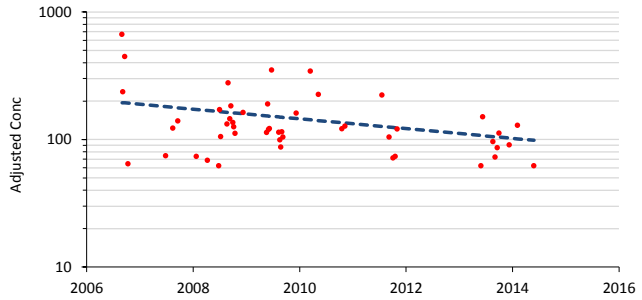
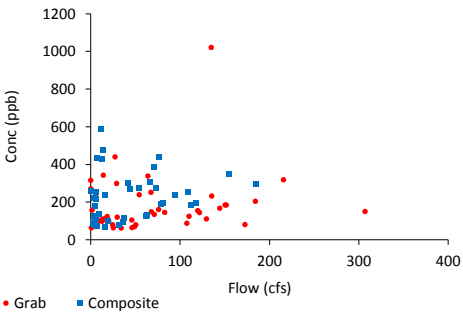
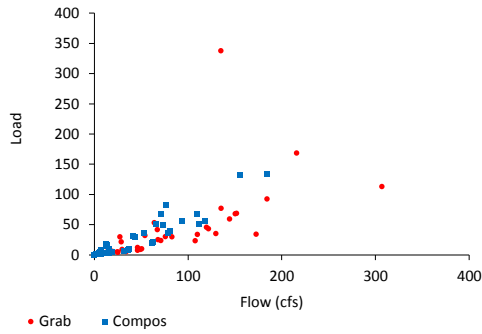
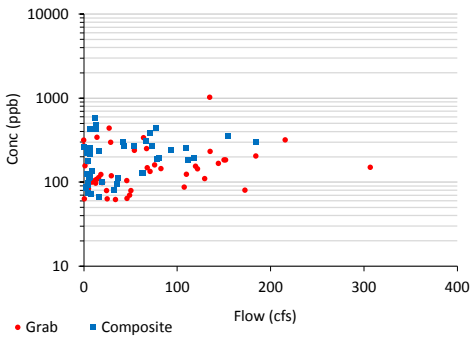
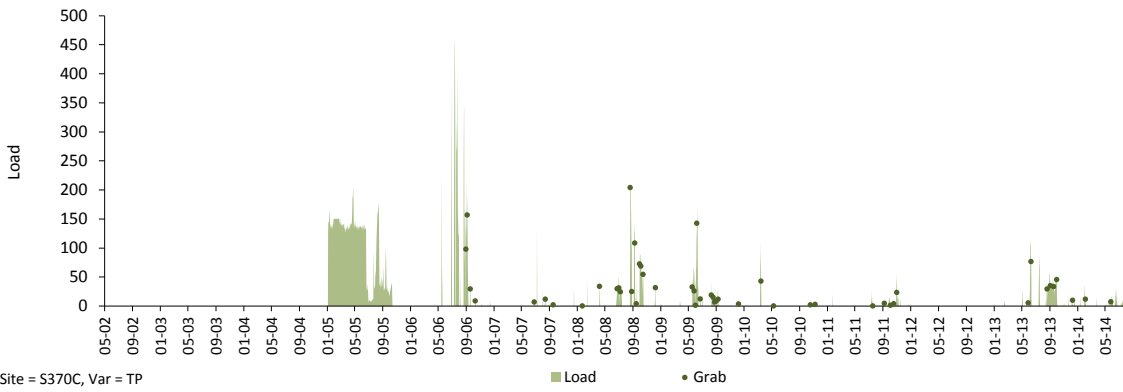
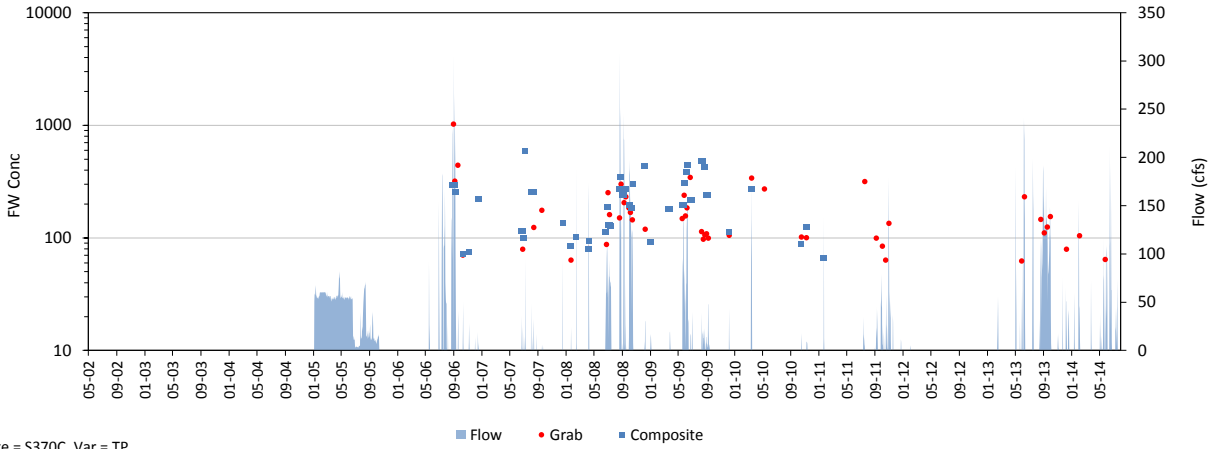


Daily Time Series

Variable: TP Dates: 05/01/02 thru 07/31/14
 Site: S370C Grabs: S370C Compos: S370C Flows: S370C
 Mean Flow: 9 cfs FWM Conc: 474.0 ppb Mean Load: 11.0 kg/day

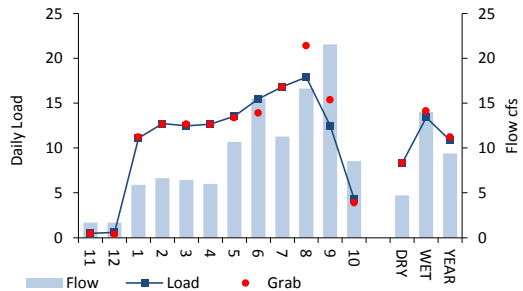
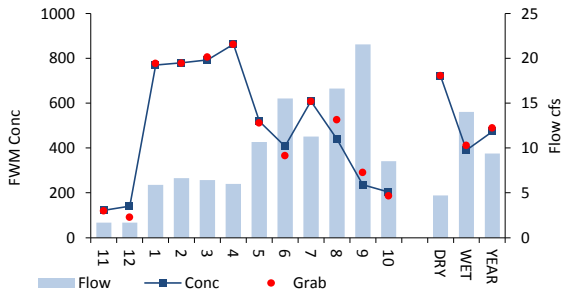
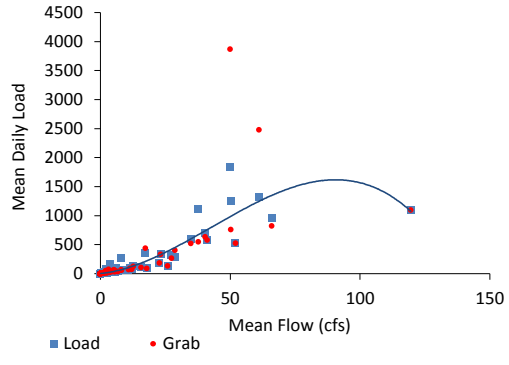
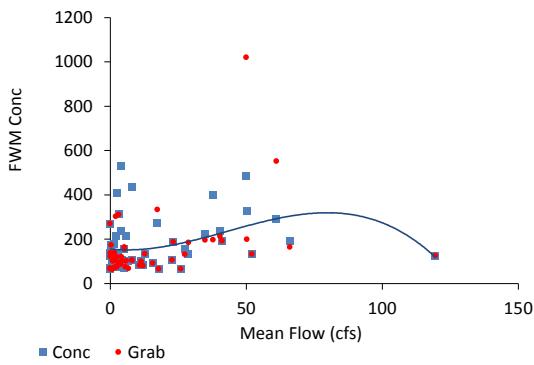
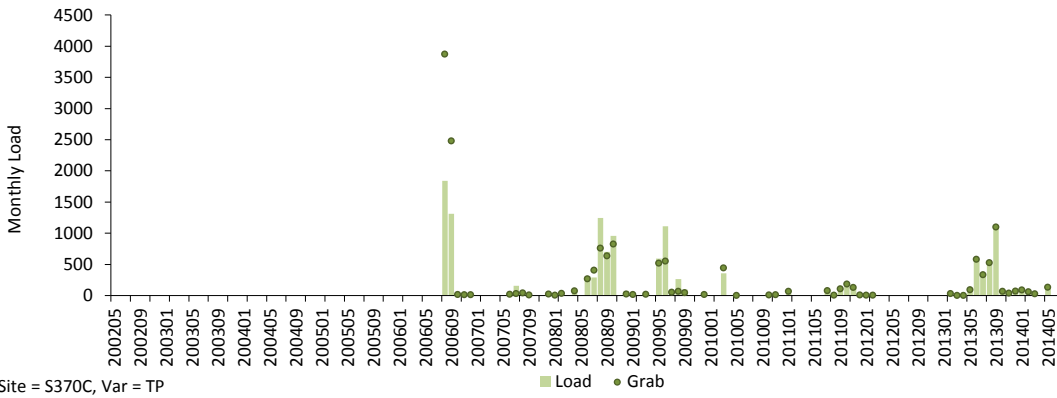
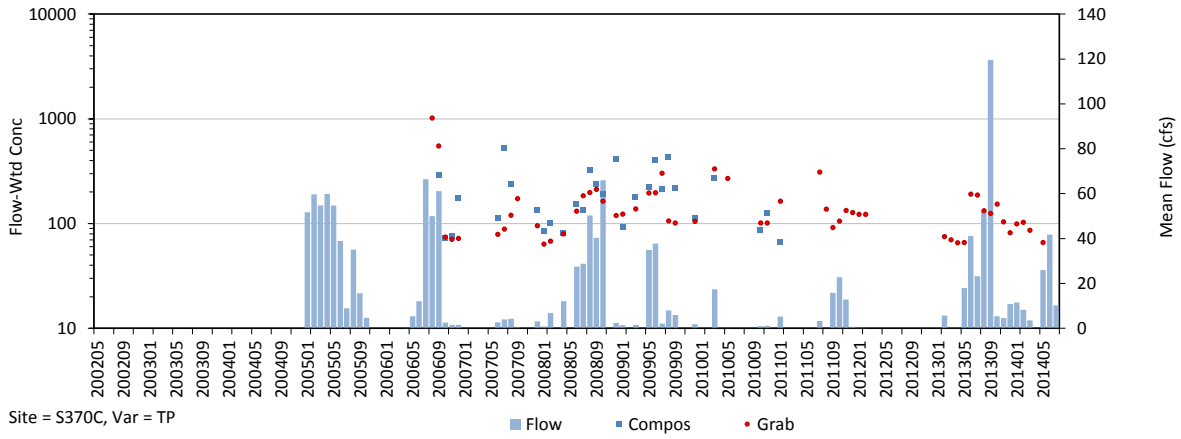


Trend in Grab Concs, Adjusted for Flow & Seasonal Variations

Trend = -8.8% / yr, p = 0.016

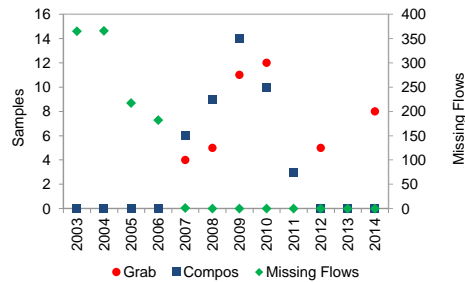
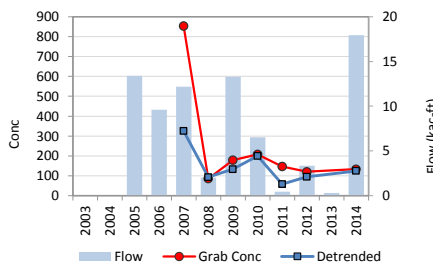
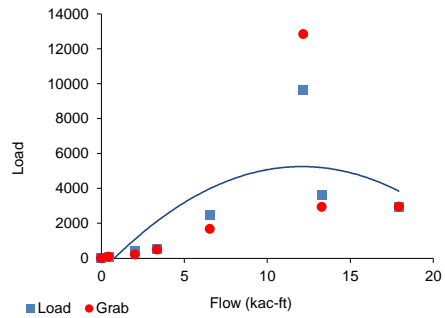
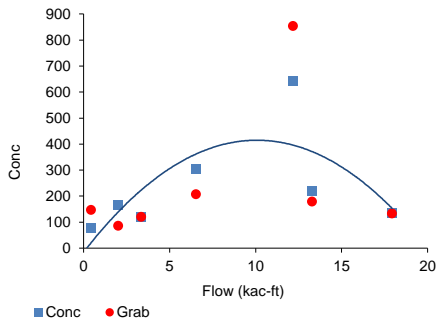
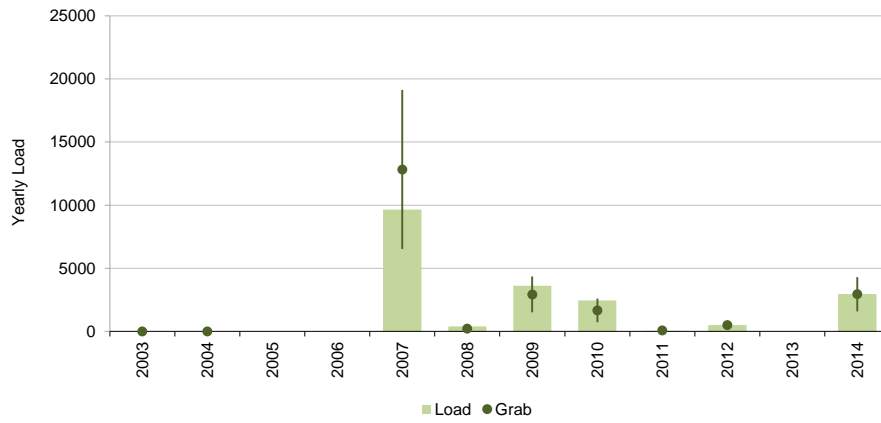
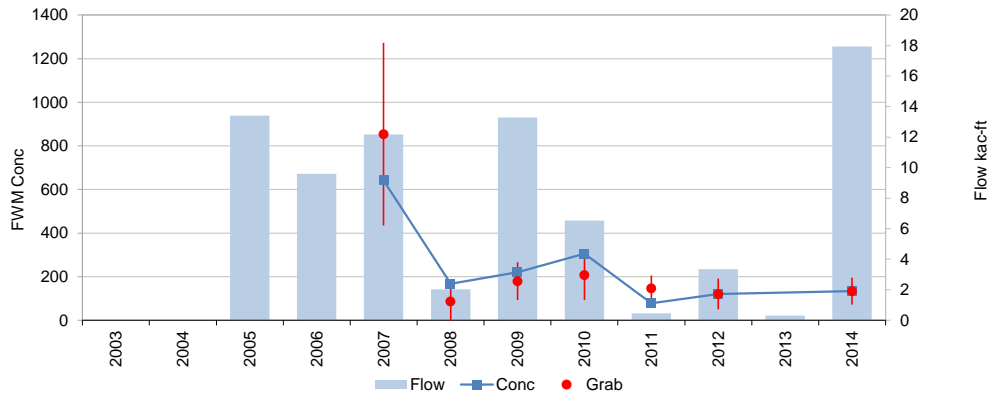
Monthly Time Series

Variable: TP Dates: 05/01/02 thru 07/31/14
 Site: S370C Grabs: S370C Compos: S370C Flows: S370C
 Mean Flow: 9.4 cfs FWM Conc: 474.0 ppb Mean Load: 11.0 kg/day



Yearly Time Series

Variable: TP Dates: 05/01/02 thru 07/31/14
 Site: S370C Grabs: S370C Compos: S370C Flows: S370C
 Mean Flow: 7 kac-ft/yr FWM Conc: 474.0 ppb Mean Load: 4000 kg / yr



Trend = -8.8 % / yr, p = 0.016

	Samples	FWM	Std Error	Grab/Composite Ratio
Grabs	49	488.9	91.2	Integrated 1.03
Compos+Grabs	42	474.0	88.4	Paired Samp 0.99