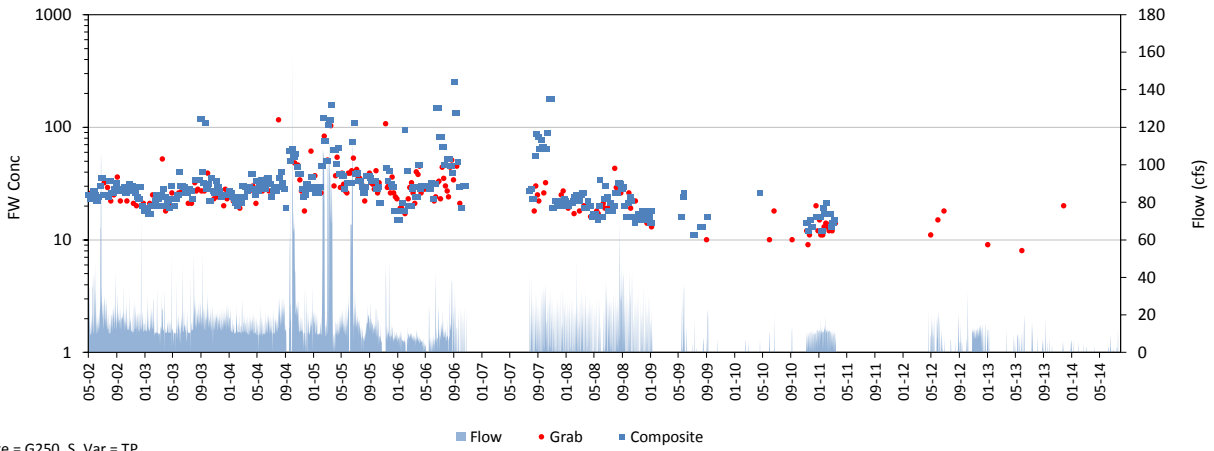
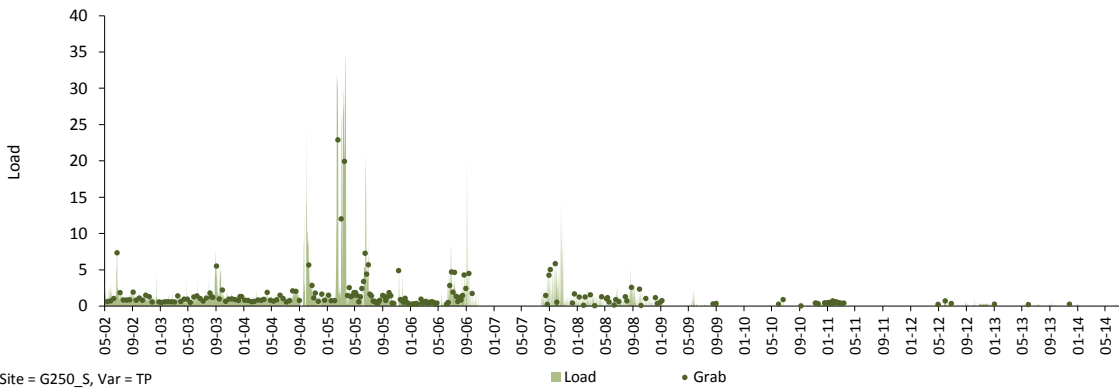


Daily Time Series

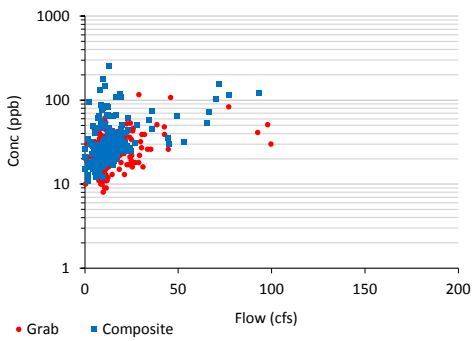
Variable: TP Dates: 05/01/02 thru 07/31/14
 Site: G250_S Grabs: ENR002 Compos: ENR002 Flows: G250_S
 Mean Flow: 8 cfs FWM Conc: 39.9 ppb Mean Load: 0.7 kg/day



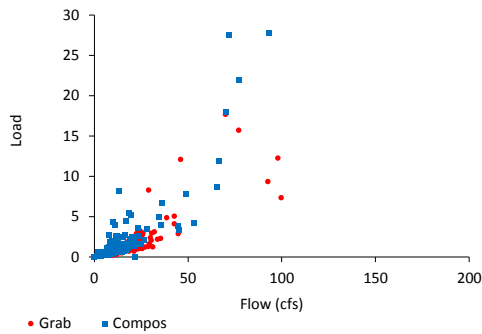
Site = G250_S, Var = TP



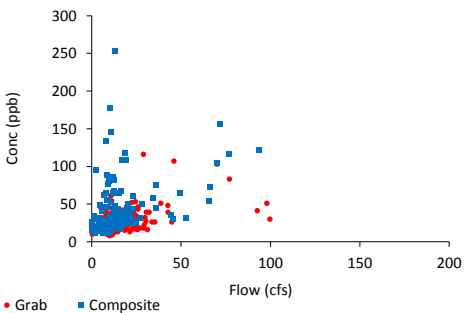
Site = G250_S, Var = TP



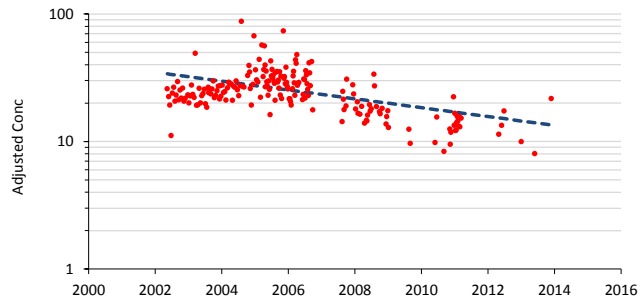
• Grab ■ Composite



• Grab ■ Compos



• Grab ■ Composite

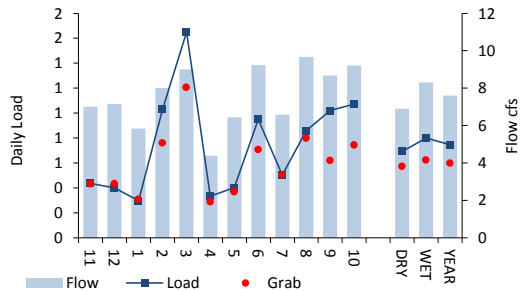
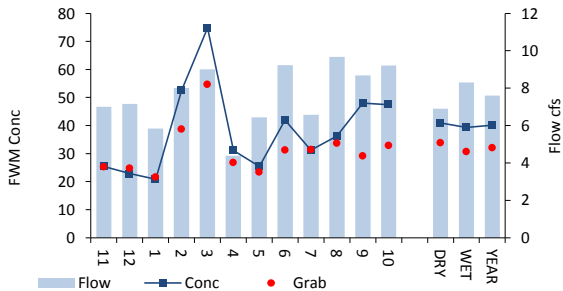
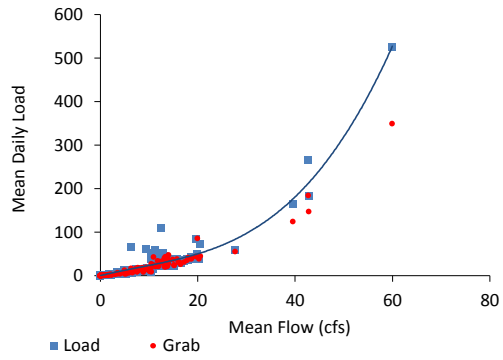
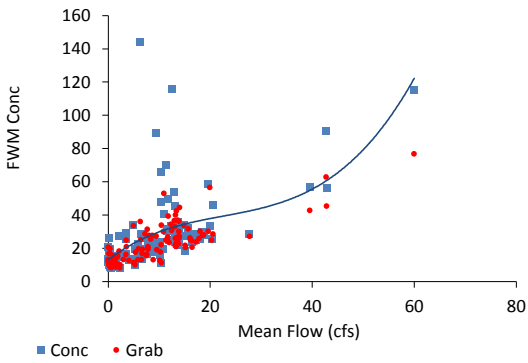
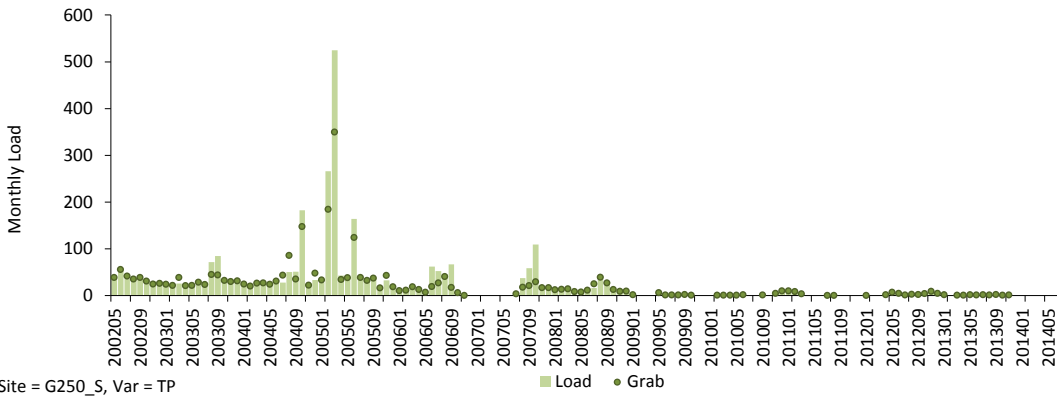
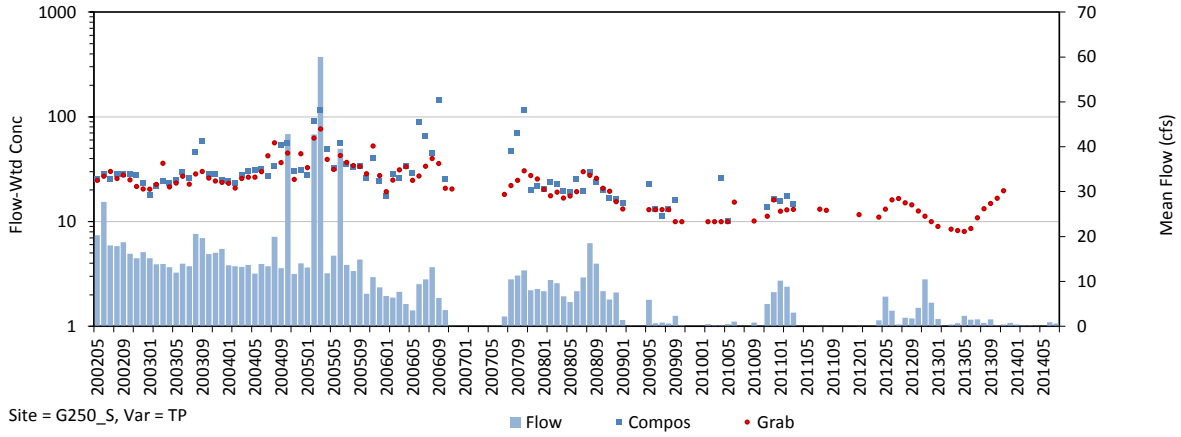


Trend in Grab Concs, Adjusted for Flow & Seasonal Variations

Trend = -8. % / yr, p = 0.000

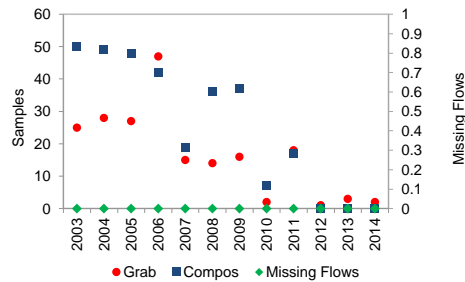
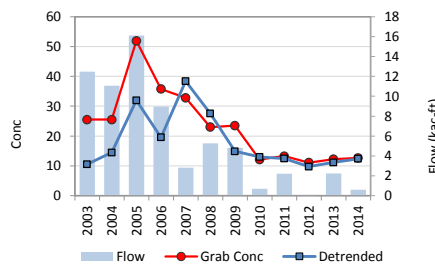
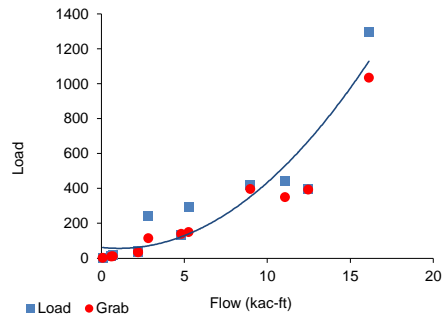
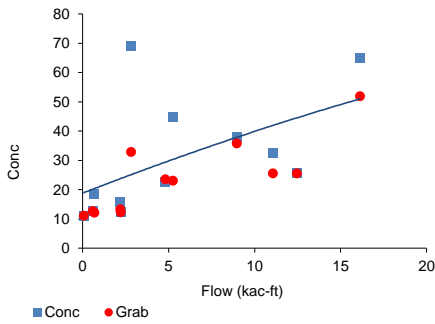
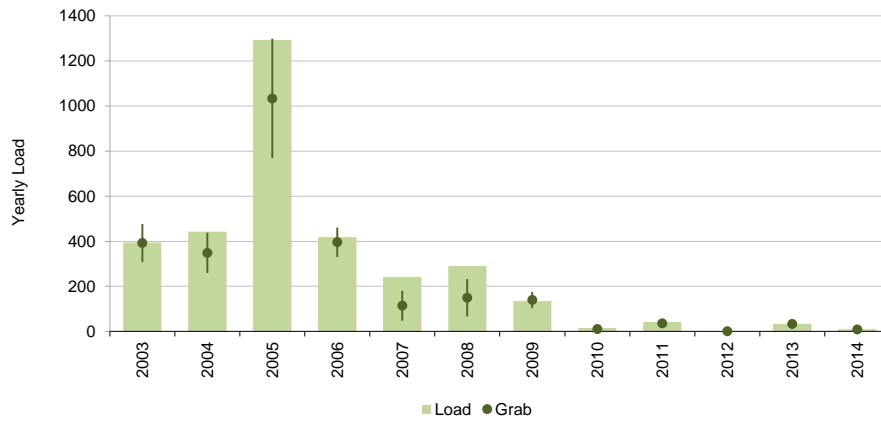
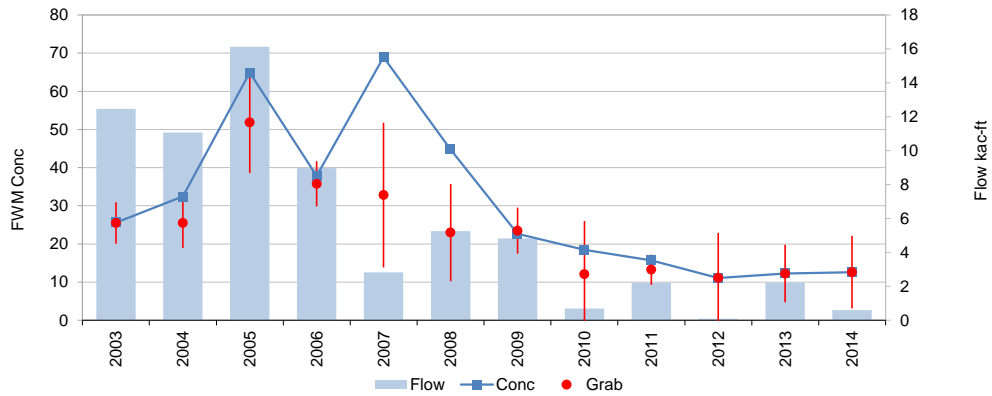
Monthly Time Series

Variable: TP Dates: 05/01/02 thru 07/31/14
 Site: G250_S Grabs: ENR002 Compos: ENR002 Flows: G250_S
 Mean Flow: 7.6 cfs FWM Conc: 39.9 ppb Mean Load: 0.7 kg/day



Yearly Time Series

Variable: TP Dates: 05/01/02 thru 07/31/14
 Site: G250_S Grabs: ENR002 Compos: ENR002 Flows: G250_S
 Mean Flow: 6 kac-ft/yr FWM Conc: 39.9 ppb Mean Load: 271 kg / yr



Trend = -8. % / yr, p = 0.000

| | Samples | FWM | Std Error | Grab/Composite Ratio |
|--------------|---------|------|-----------|----------------------|
| Grabs | 198 | 32.0 | 2.4 | Integrated 0.80 |
| Compos+Grabs | 305 | 39.9 | 3.0 | Paired Samp 0.89 |