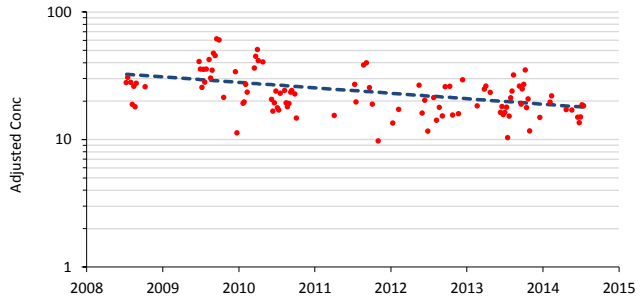
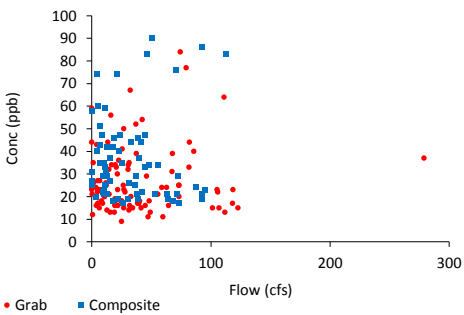
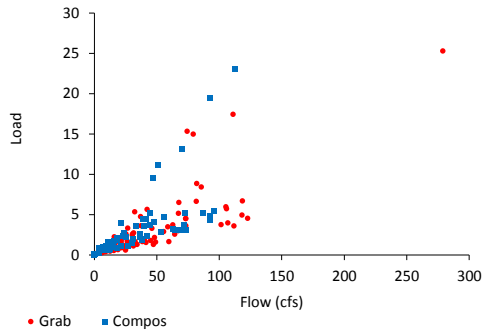
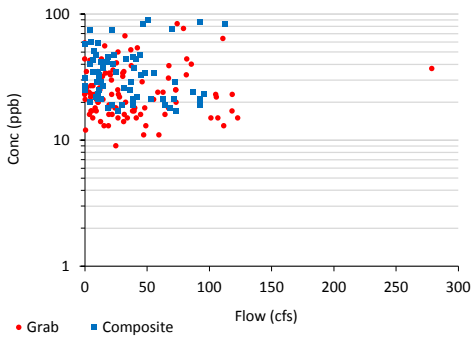
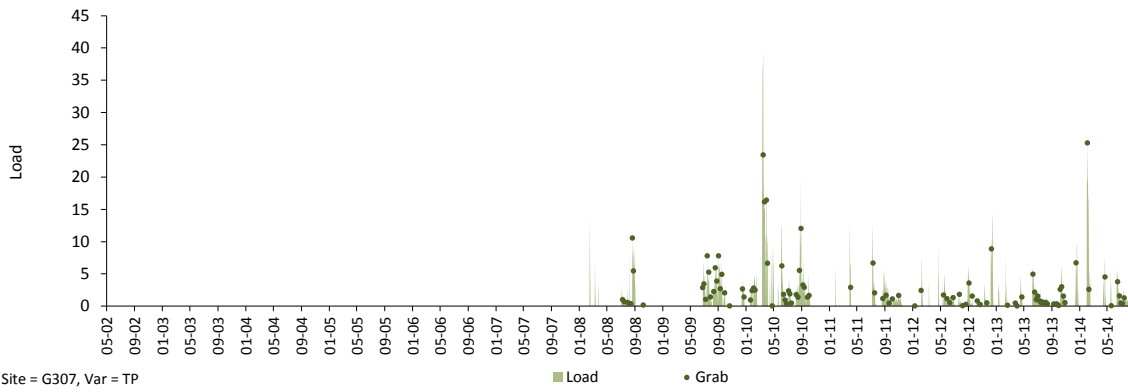
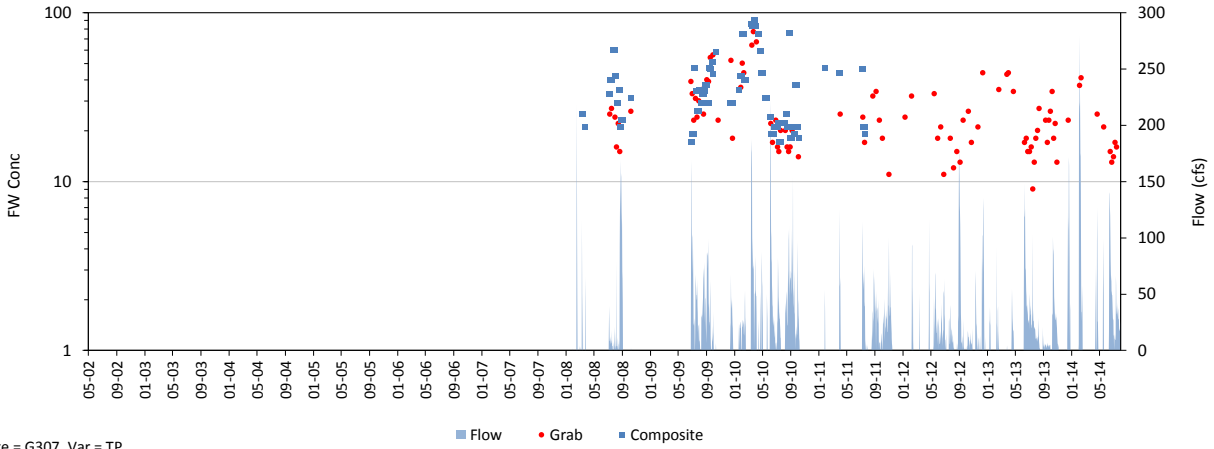


Daily Time Series

Variable: TP Dates: 05/01/02 thru 07/31/14
 Site: G307 Grabs: G307 Compos: G307 Flows: G307
 Mean Flow: 8 cfs FWM Conc: 29.8 ppb Mean Load: 0.6 kg/day

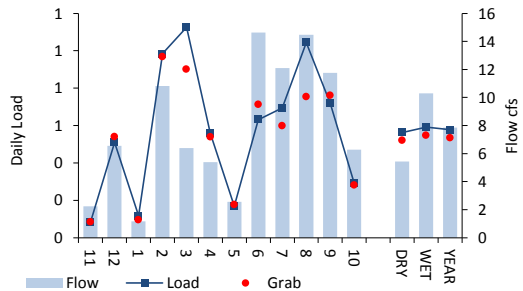
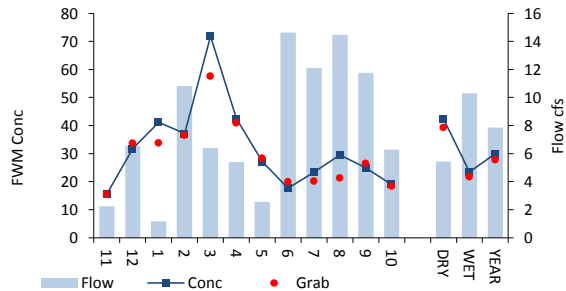
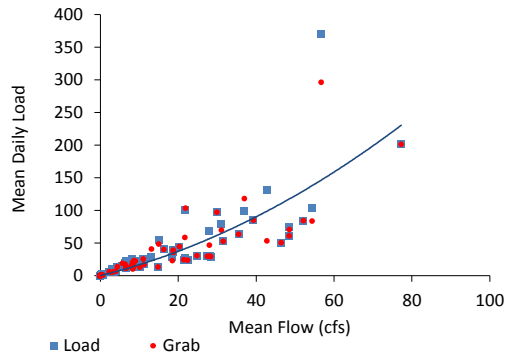
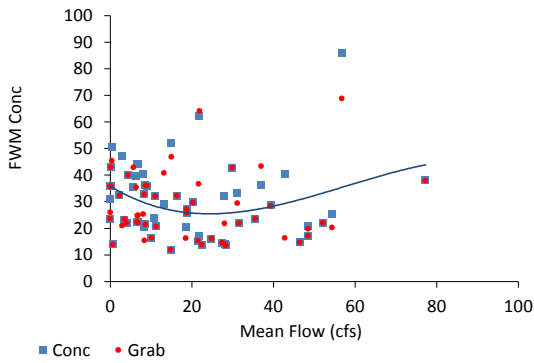
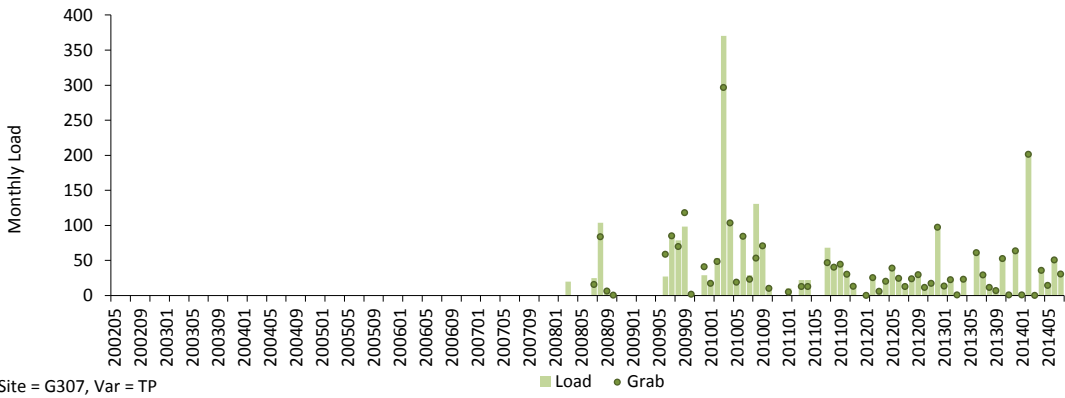
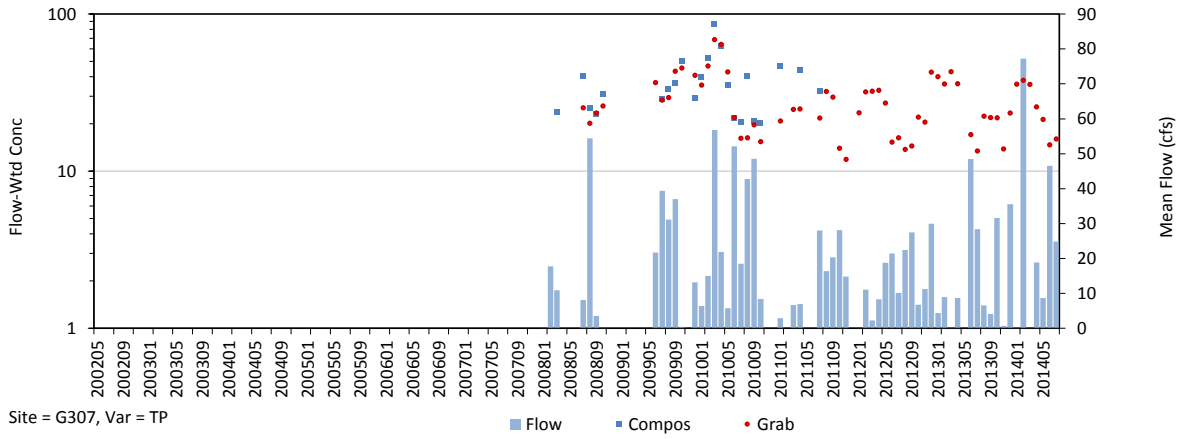


Trend in Grab Concs, Adjusted for Flow & Seasonal Variations

Trend = -9.8 % / yr, p = 0.000

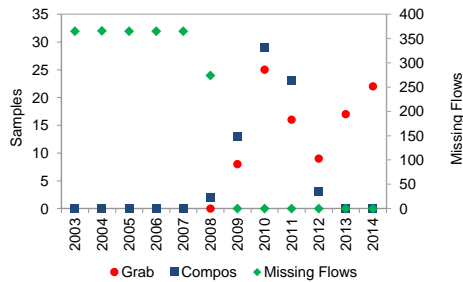
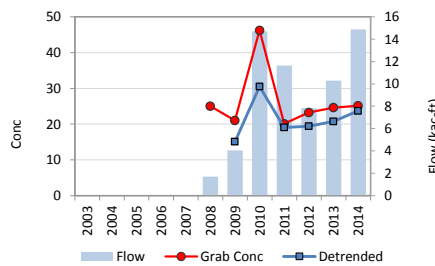
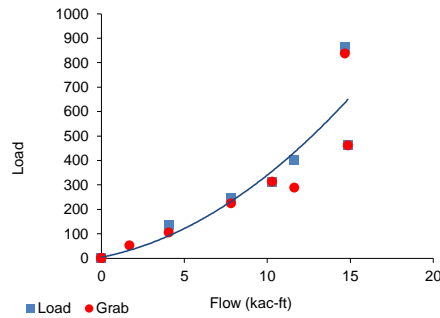
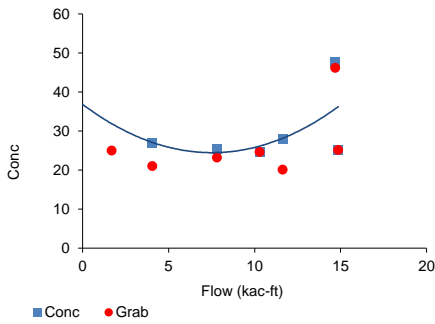
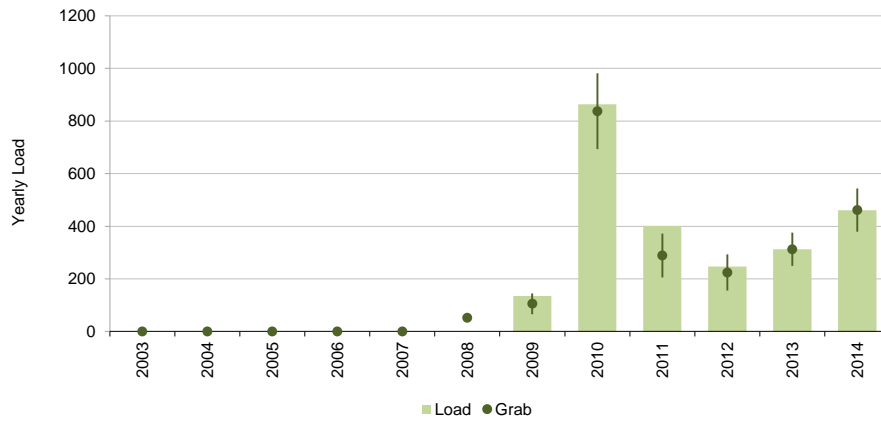
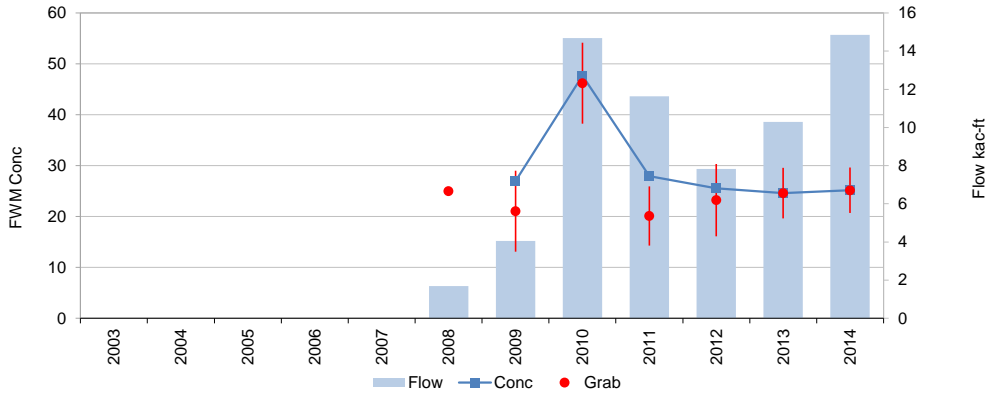
Monthly Time Series

Variable: TP Dates: 05/01/02 thru 07/31/14
 Site: G307 Grabs: G307 Compos: G307 Flows: G307
 Mean Flow: 7.9 cfs FWM Conc: 29.8 ppb Mean Load: 0.6 kg/day



Yearly Time Series

Variable: TP Dates: 05/01/02 thru 07/31/14
 Site: G307 Grabs: G307 Compos: G307 Flows: G307
 Mean Flow: 6 kac-ft/yr FWM Conc: 29.8 ppb Mean Load: 209 kg / yr



Trend = -9.8 % / yr, p = 0.000

	Samples	FWM	Std Error	Grab/Composite Ratio
Grabs	103	27.6	2.3	Integrated 0.93
Compos+Grabs	70	29.8	2.4	Paired Samp 0.85