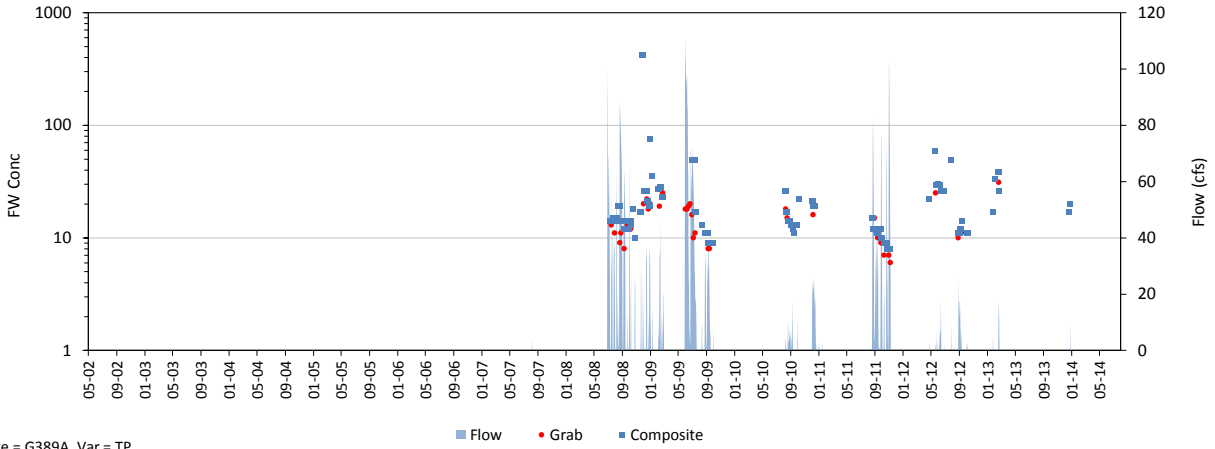
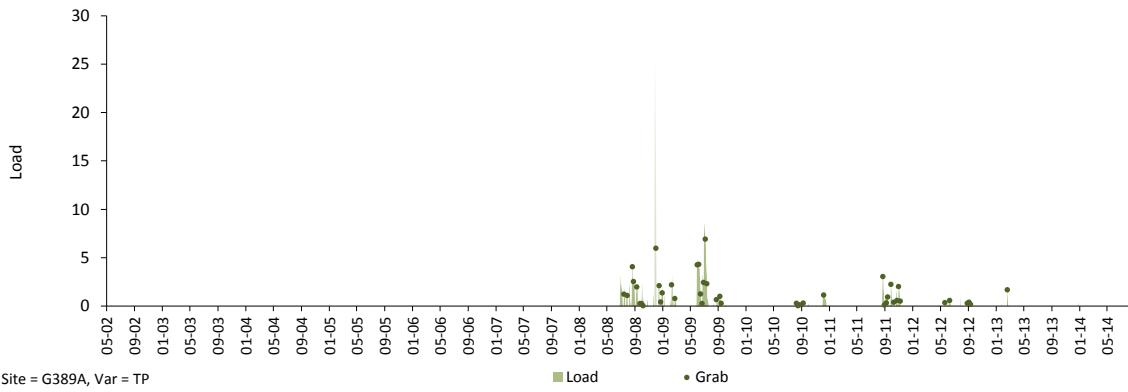


Daily Time Series

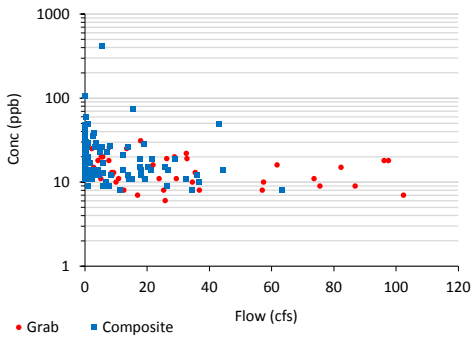
Variable: TP Dates: 05/01/02 thru 07/31/14
 Site: G389A Grabs: G389A Compos: G389A Flows: G389A
 Mean Flow: 2 cfs FWM Conc: 19.7 ppb Mean Load: 0.1 kg/day



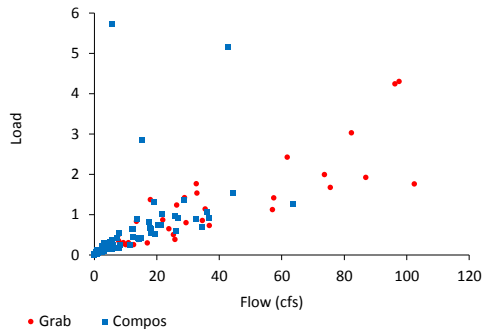
Site = G389A, Var = TP



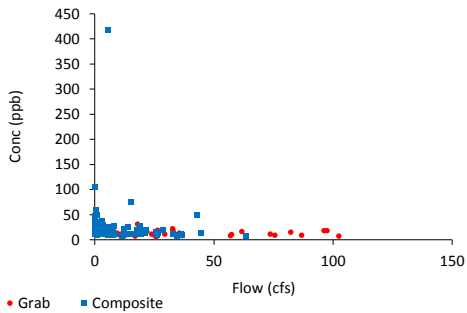
Site = G389A, Var = TP



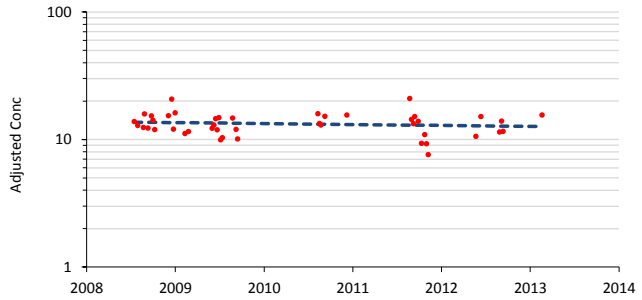
• Grab ■ Composite



• Grab ■ Compos



• Grab ■ Composite

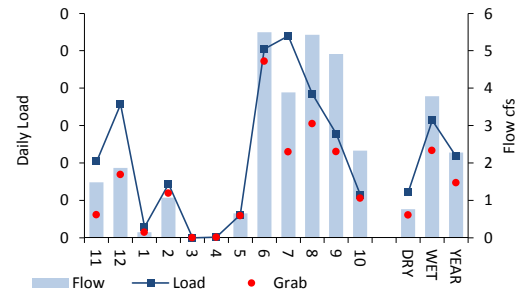
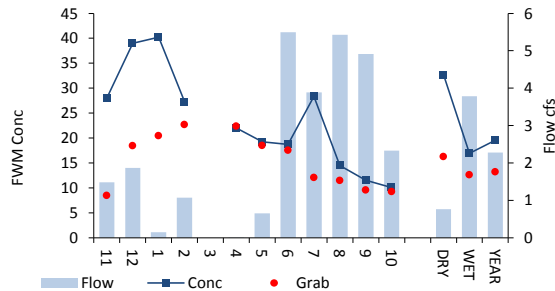
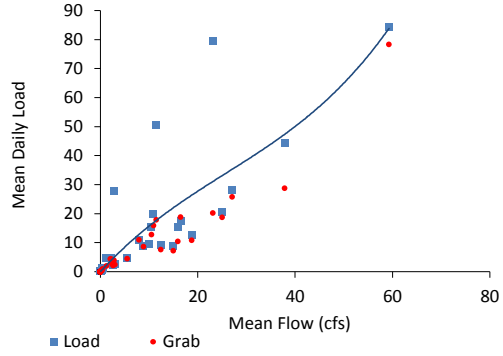
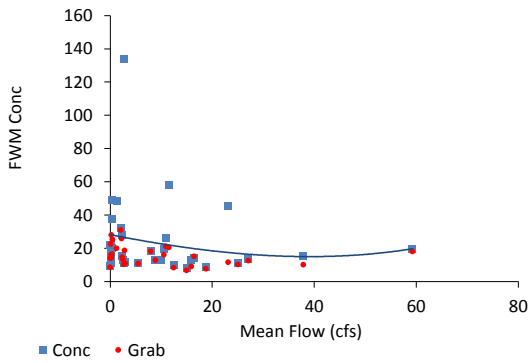
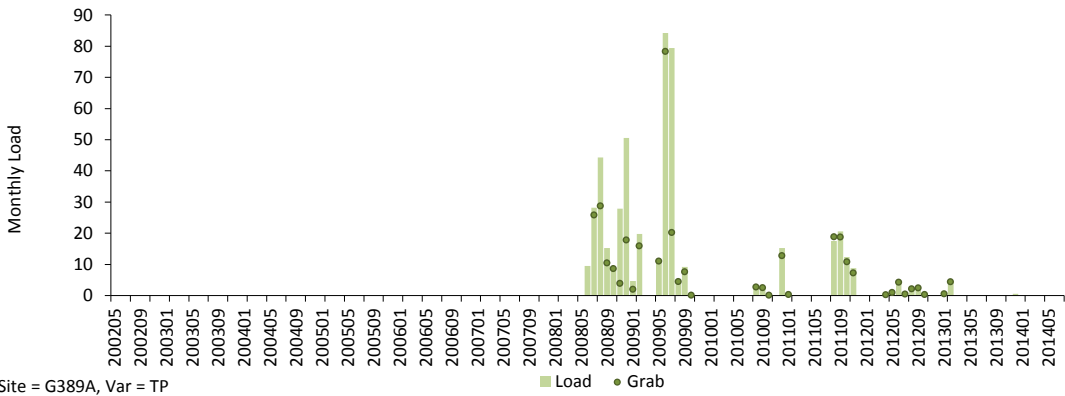
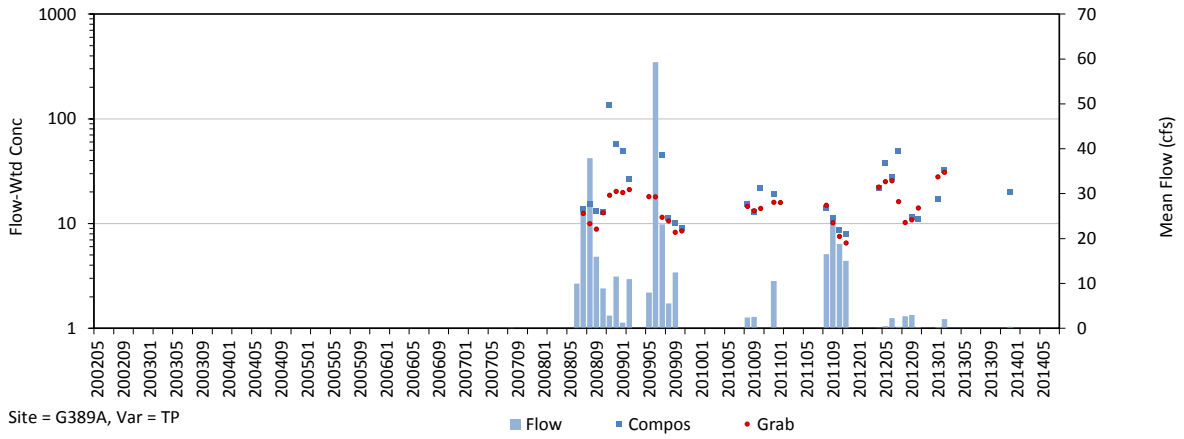


Trend in Grab Concs, Adjusted for Flow & Seasonal Variations

Trend = -1.7% / yr, p = 0.470

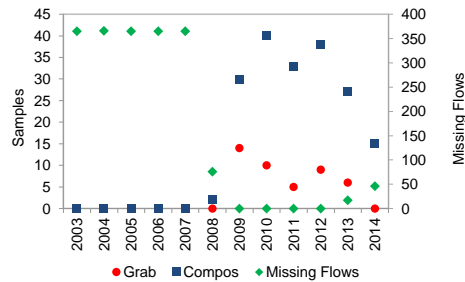
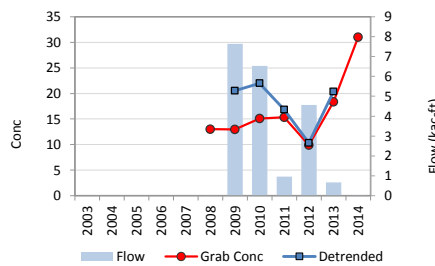
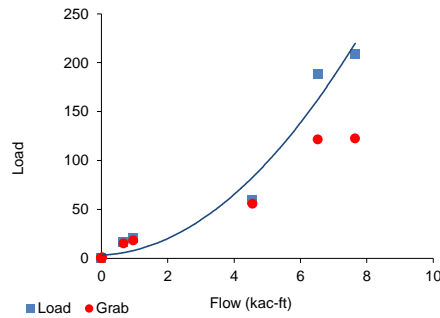
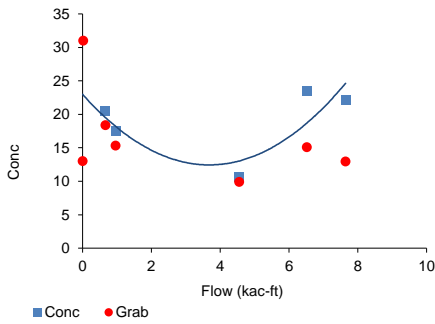
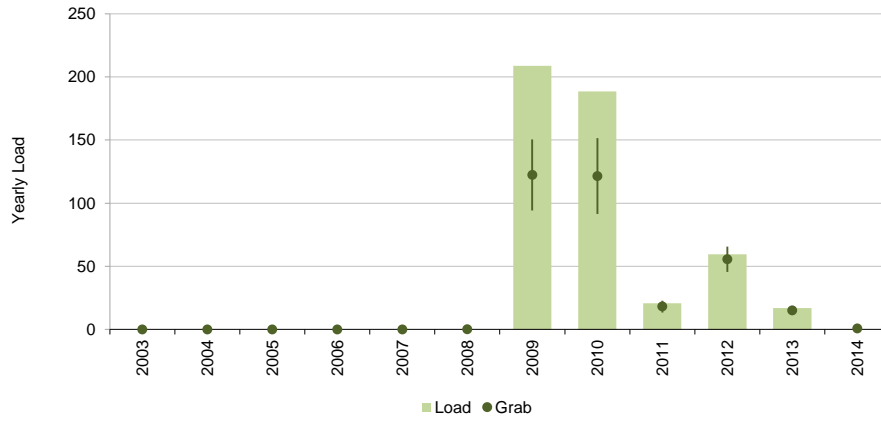
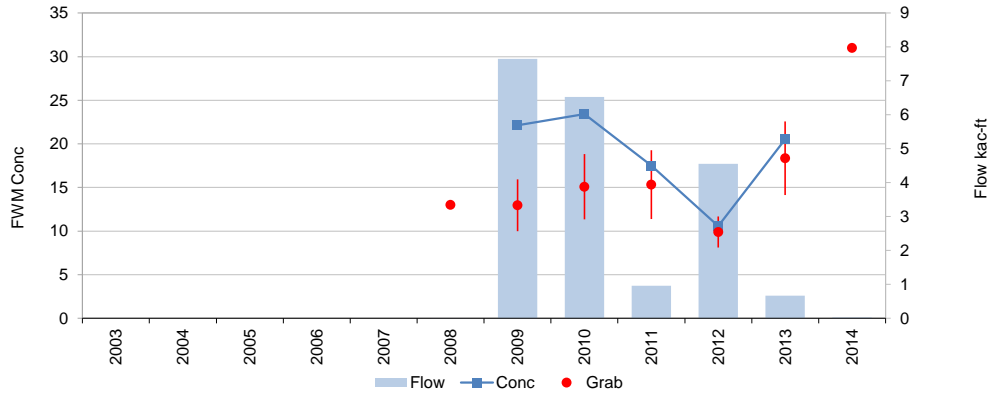
Monthly Time Series

Variable: TP Dates: 05/01/02 thru 07/31/14
 Site: G389A Grabs: G389A Compos: G389A Flows: G389A
 Mean Flow: 2.3 cfs FWM Conc: 19.7 ppb Mean Load: 0.1 kg/day



Yearly Time Series

Variable: TP Dates: 05/01/02 thru 07/31/14
 Site: G389A Grabs: G389A Compos: G389A Flows: G389A
 Mean Flow: 2 kac-ft/yr FWM Conc: 19.7 ppb Mean Load: 40 kg / yr



Trend = -1.7% / yr, p = 0.470

	Samples	FWM	Std Error	Grab/Composite Ratio
Grabs	44	13.3	1.0	Integrated 0.67
Compos+Grabs	186	19.7	1.5	Paired Samp 0.60