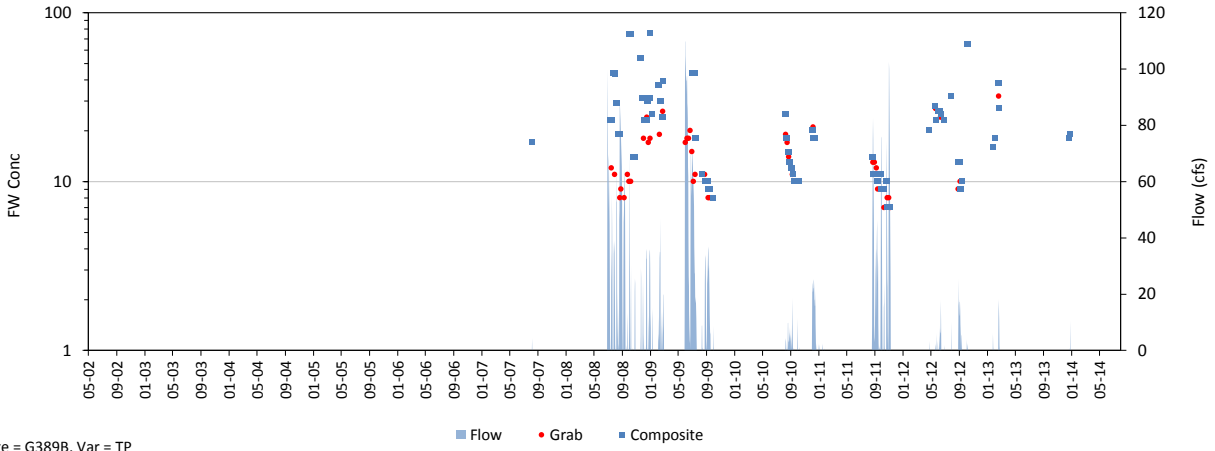
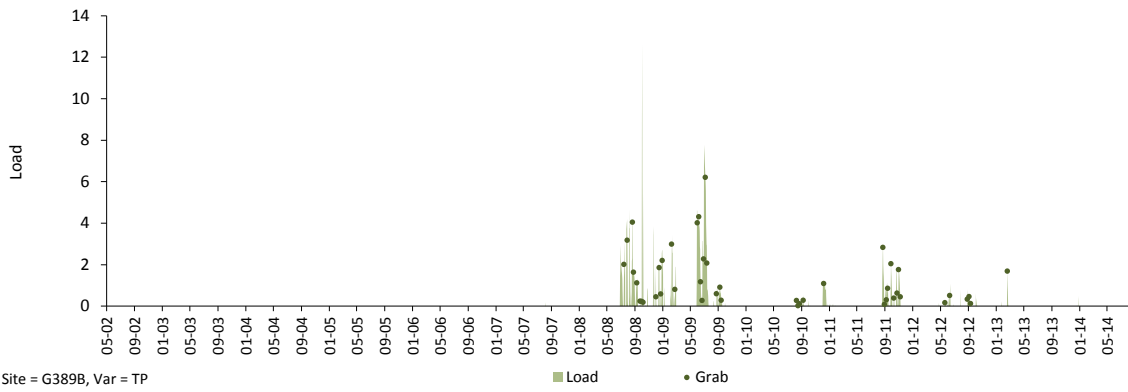


Daily Time Series

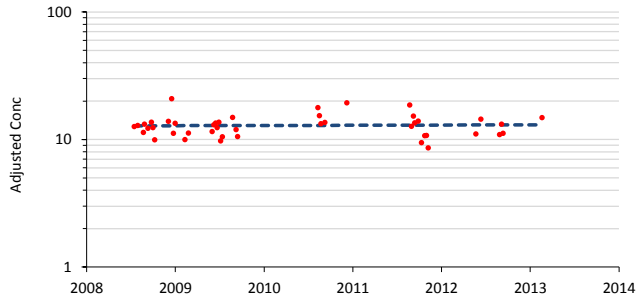
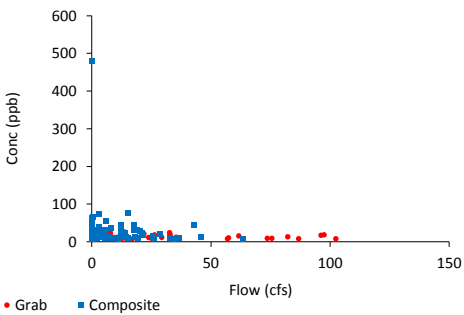
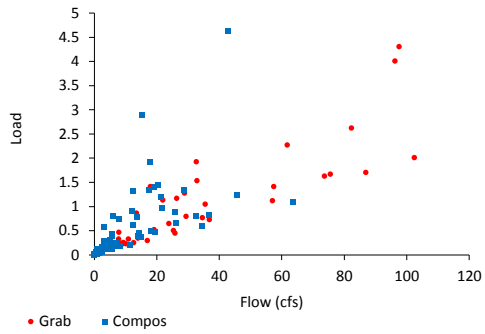
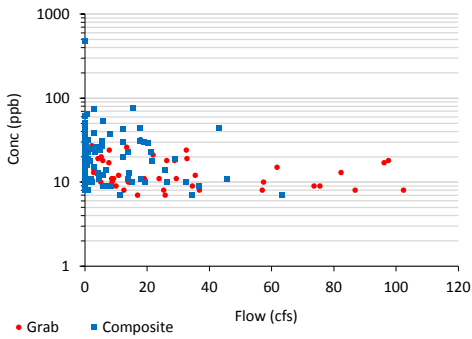
Variable: TP      Dates: 05/01/02 thru 07/31/14  
 Site: G389B      Grabs: G389B      Compos: G389B      Flows: G389B  
 Mean Flow: 2 cfs      FWM Conc: 19.1 ppb      Mean Load: 0.1 kg/day



Site = G389B, Var = TP



Site = G389B, Var = TP

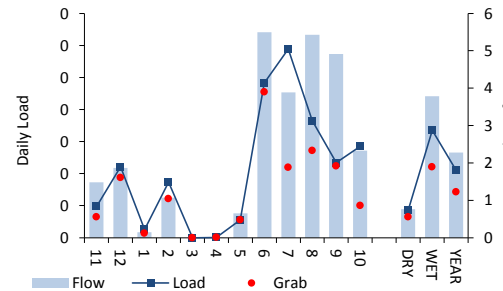
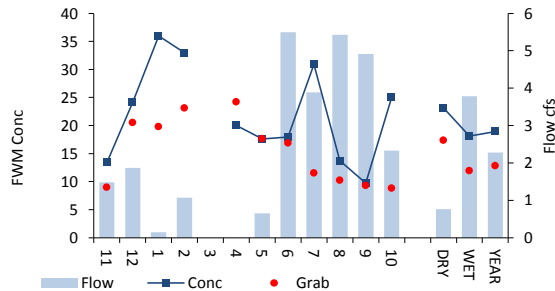
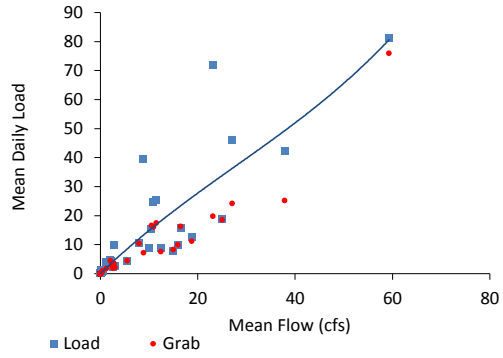
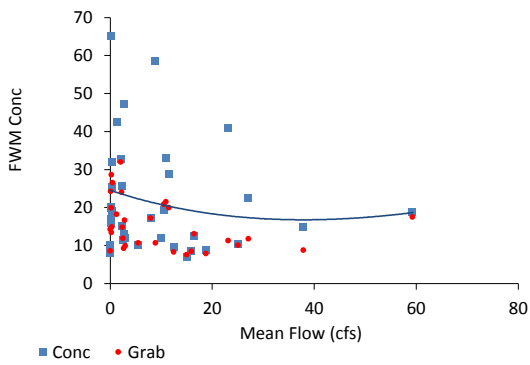
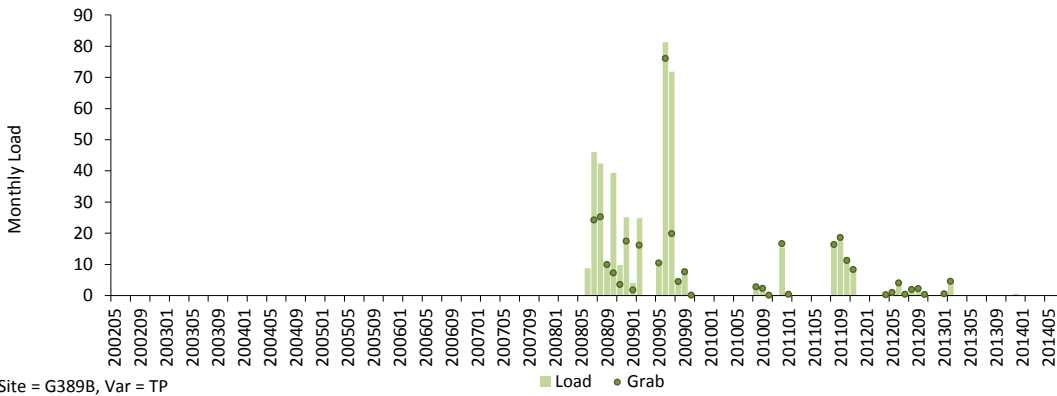
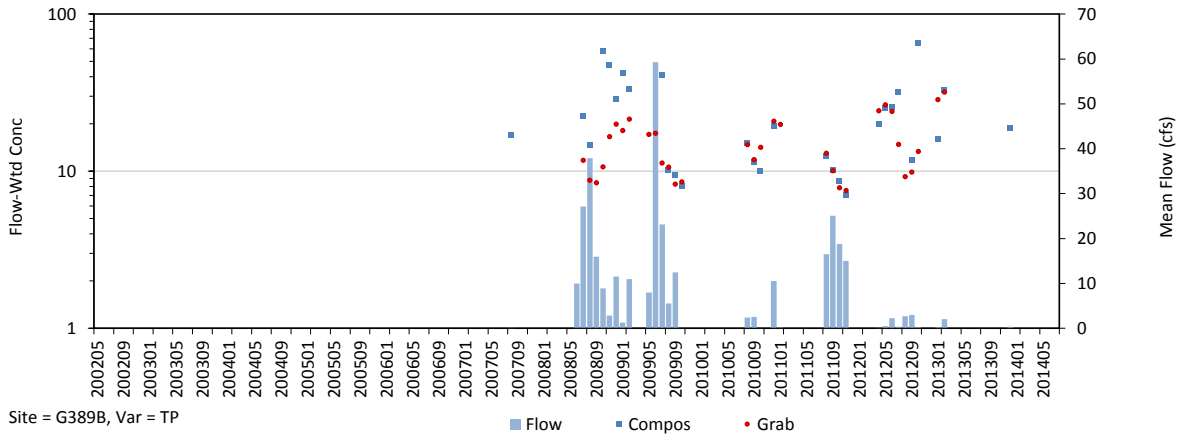


Trend in Grab Concs, Adjusted for Flow & Seasonal Variations

Trend = .4% / yr,  $p = 0.870$

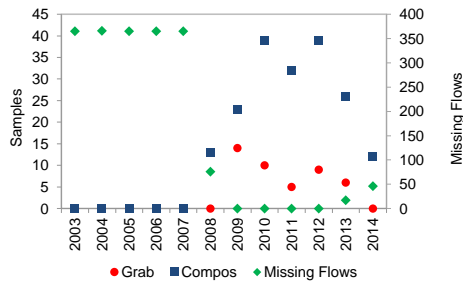
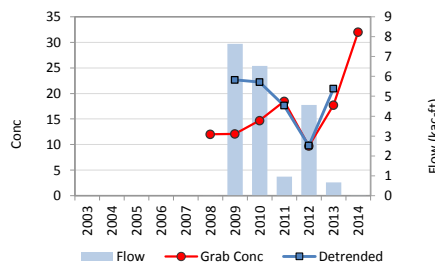
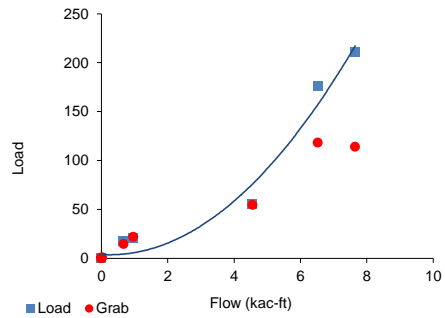
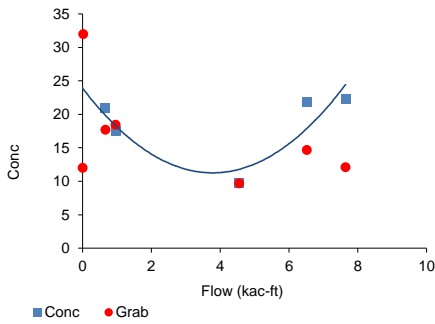
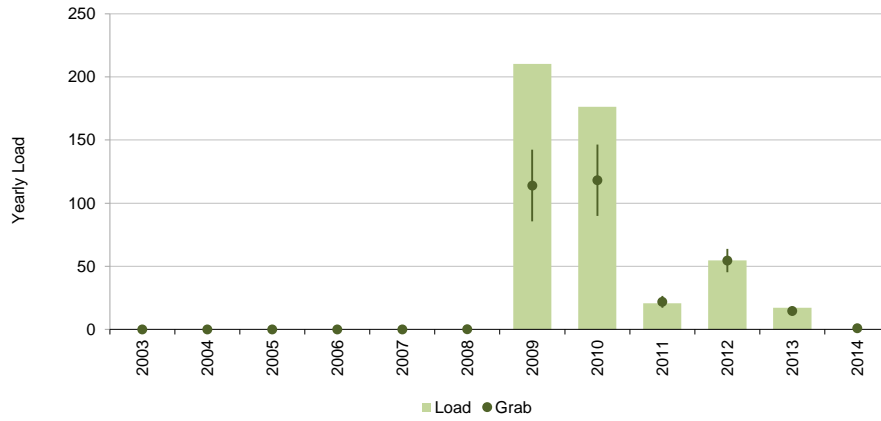
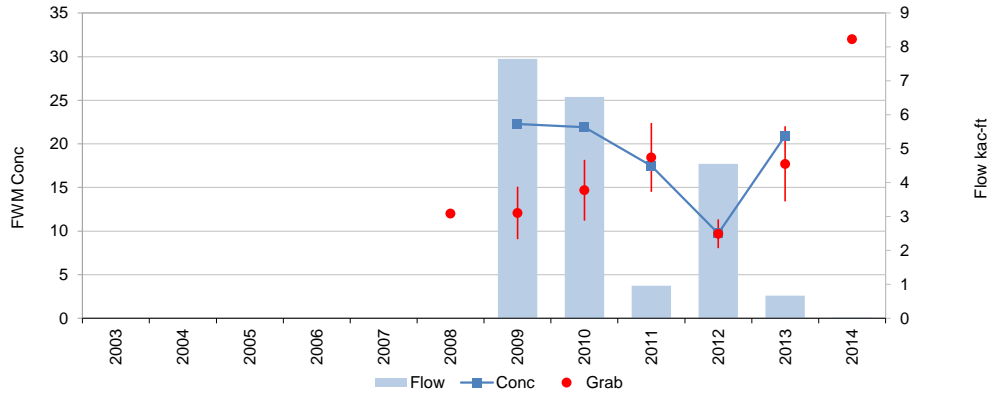
# Monthly Time Series

Variable: TP      Dates: 05/01/02 thru 07/31/14  
 Site: G389B      Grabs: G389B      Compos: G389B      Flows: G389B  
 Mean Flow: 2.3 cfs      FWM Conc: 19.1 ppb      Mean Load: 0.1 kg/day



### Yearly Time Series

Variable: TP      Dates: 05/01/02 thru 07/31/14  
 Site: G389B      Grabs: G389B      Compos: G389B      Flows: G389B  
 Mean Flow: 2 kac-ft/yr      FWM Conc: 19.1 ppb      Mean Load: 39 kg/yr



Trend = .4 % / yr, p = 0.870

	Samples	FWM	Std Error	Grab/Composite Ratio
Grabs	44	12.9	1.0	Integrated 0.68
Compos+Grabs	185	19.1	1.5	Paired Samp 0.62