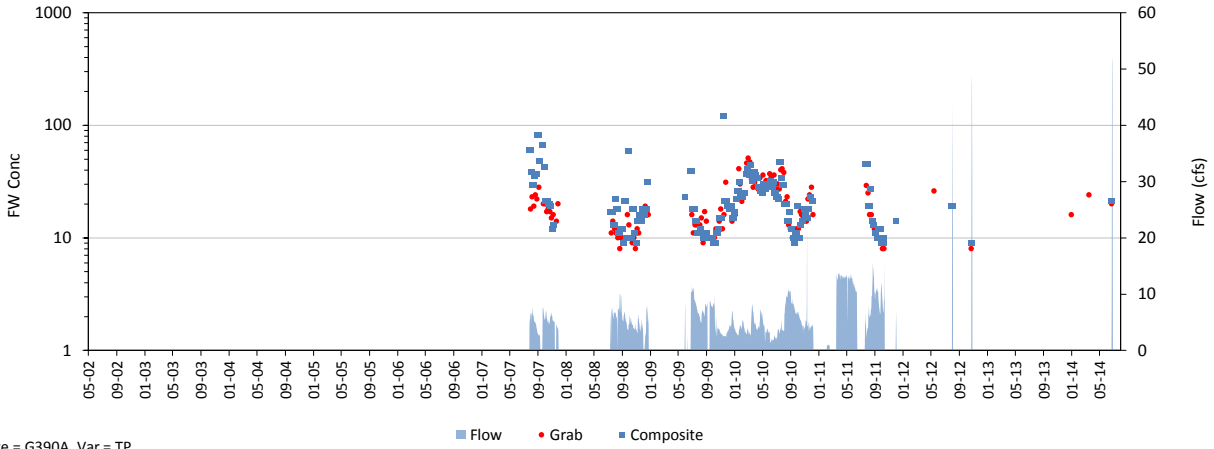
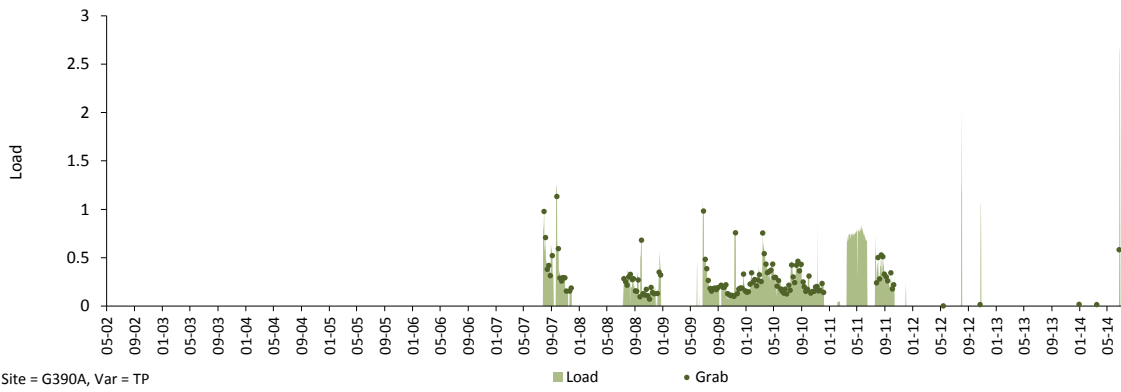


Daily Time Series

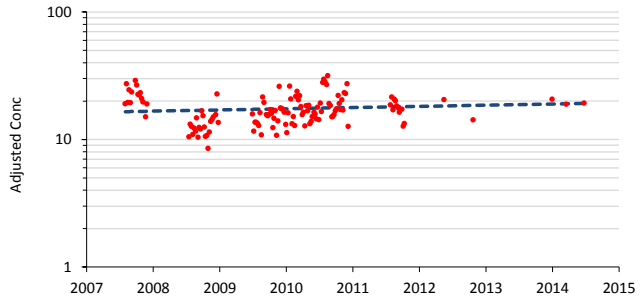
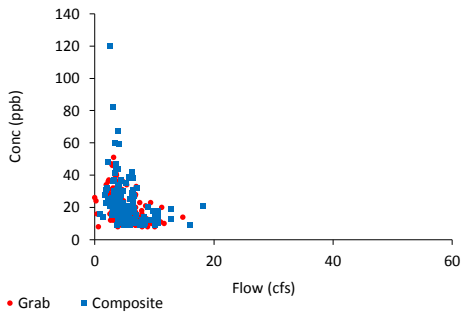
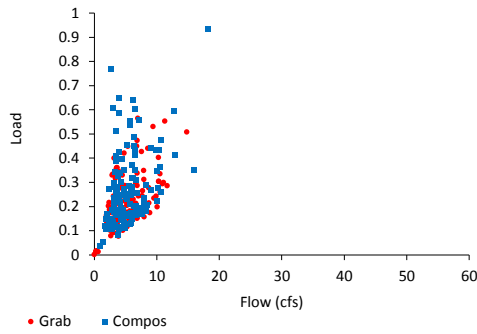
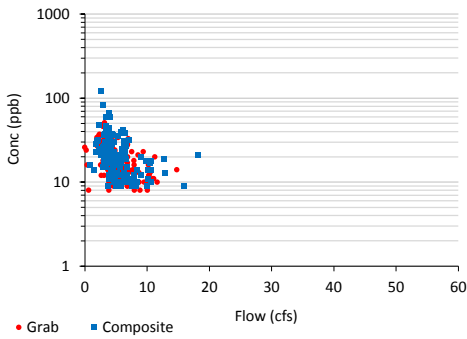
Variable: TP Dates: 05/01/02 thru 07/31/14
 Site: G390A Grabs: G390A Compos: G390A Flows: G390A
 Mean Flow: 1 cfs FWM Conc: 20.7 ppb Mean Load: 0.1 kg/day



Site = G390A, Var = TP



Site = G390A, Var = TP

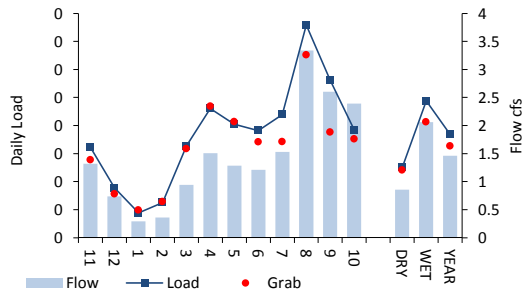
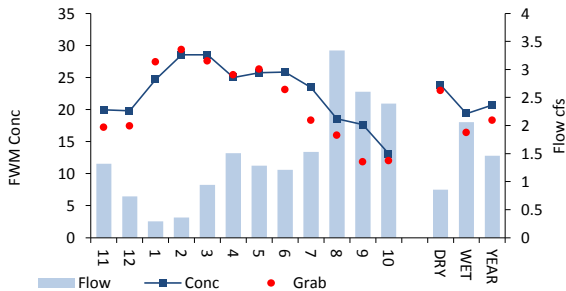
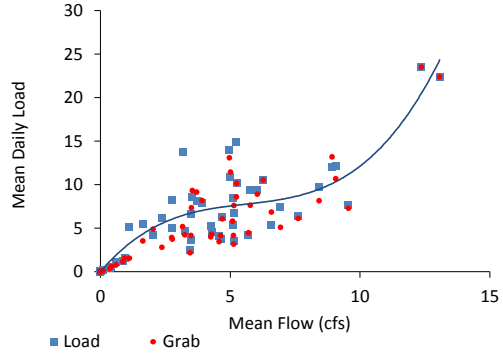
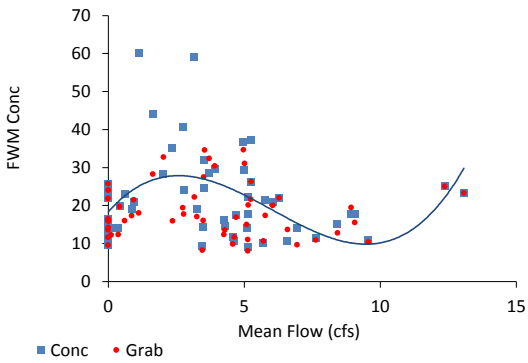
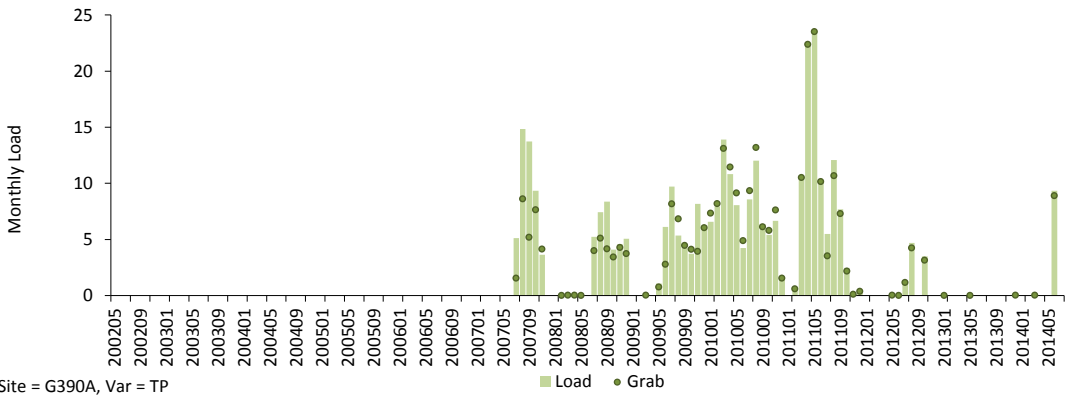
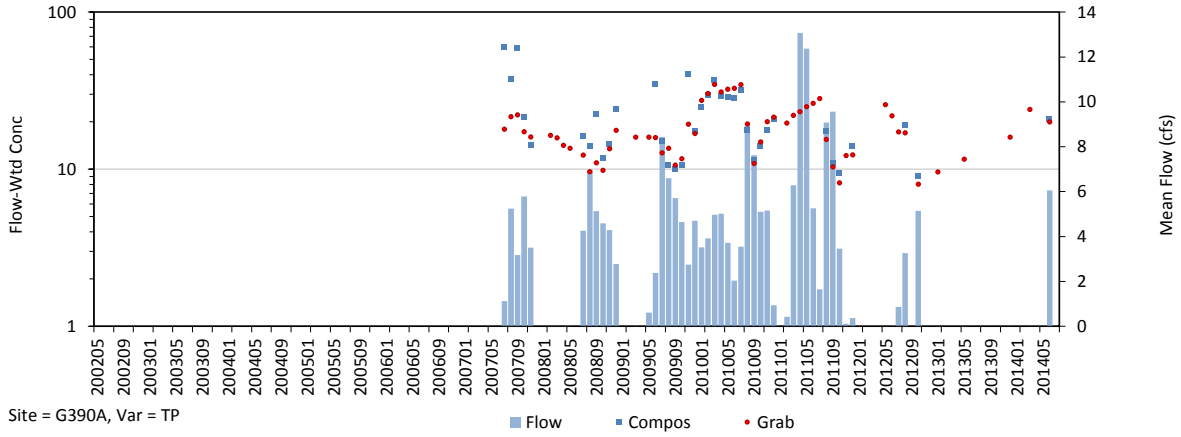


Trend in Grab Concs, Adjusted for Flow & Seasonal Variations

Trend = 2.2 % / yr, p = 0.343

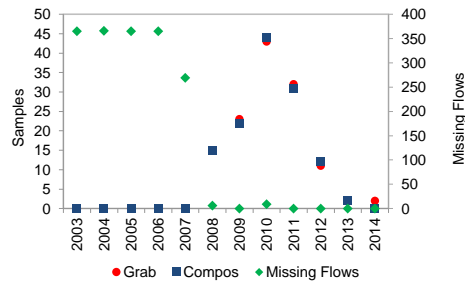
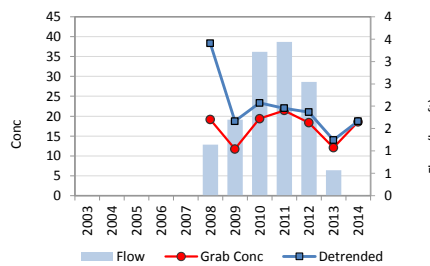
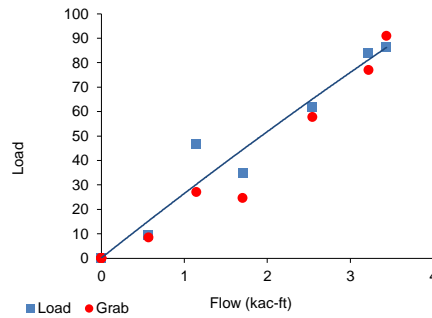
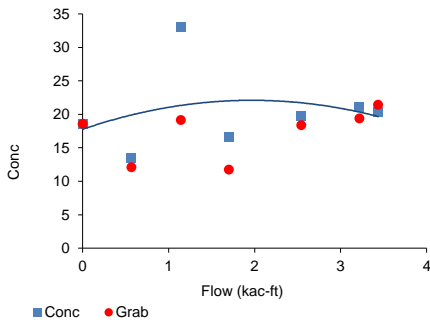
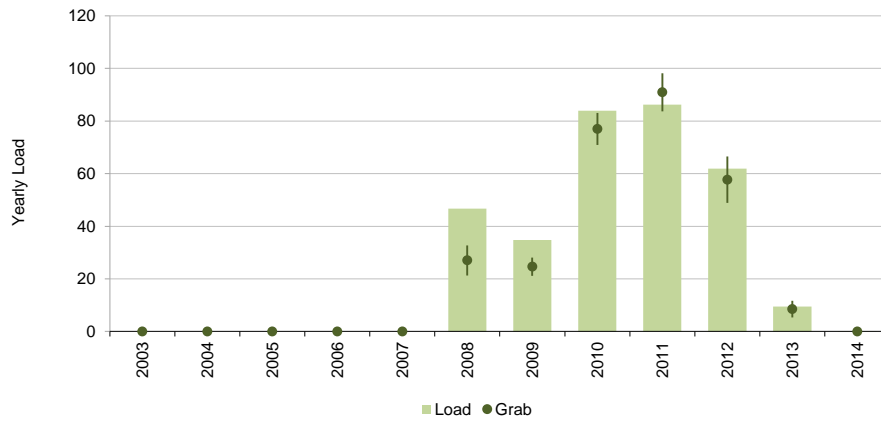
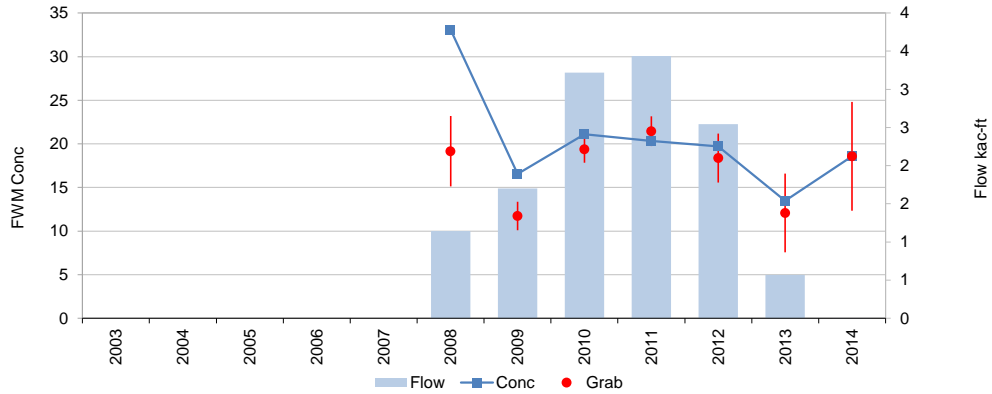
Monthly Time Series

Variable: TP Dates: 05/01/02 thru 07/31/14
 Site: G390A Grabs: G390A Compos: G390A Flows: G390A
 Mean Flow: 1.5 cfs FWM Conc: 20.7 ppb Mean Load: 0.1 kg/day



Yearly Time Series

Variable: TP Dates: 05/01/02 thru 07/31/14
 Site: G390A Grabs: G390A Compos: G390A Flows: G390A
 Mean Flow: 1 kac-ft/yr FWM Conc: 20.7 ppb Mean Load: 27 kg/yr



Trend = 2.2 % / yr, p = 0.343

	Samples	FWM	Std Error	Grab/Composite Ratio
Grabs	129	18.4	0.8	Integrated 0.89
Compos+Grabs	127	20.7	0.9	Paired Samp 0.83