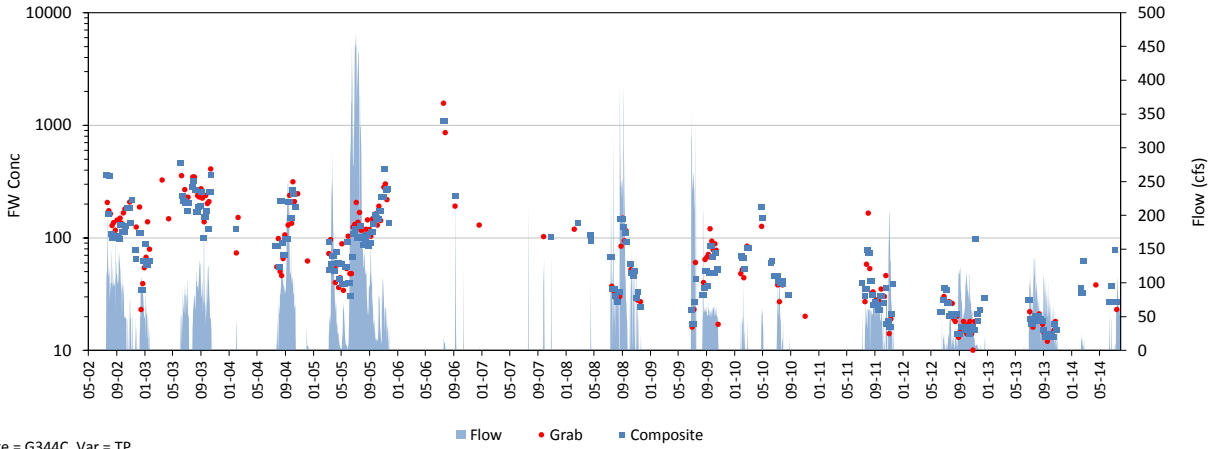
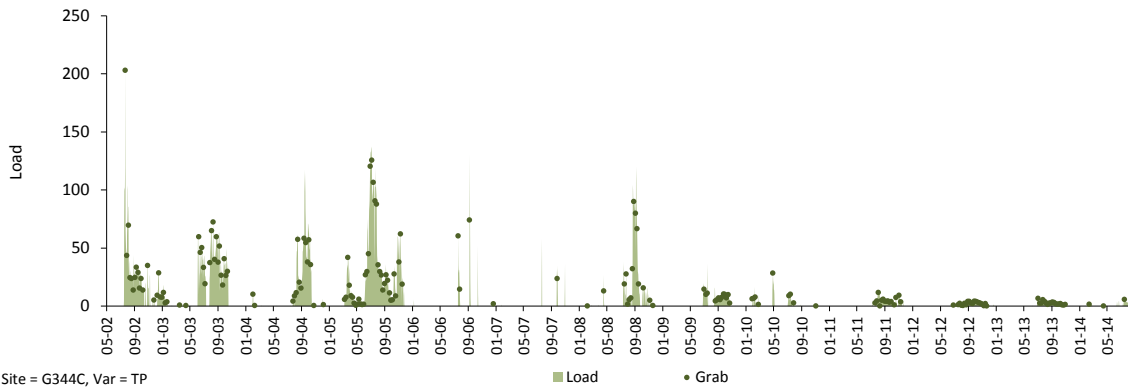


Daily Time Series

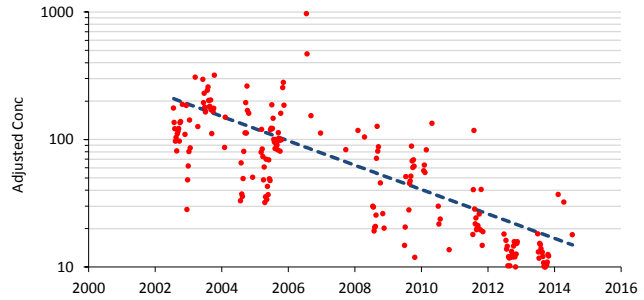
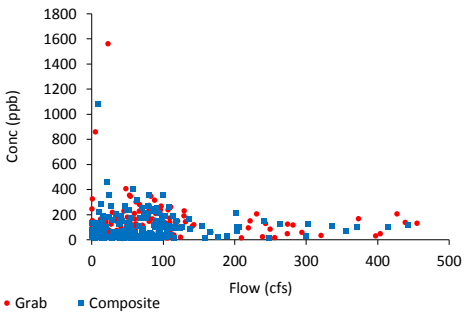
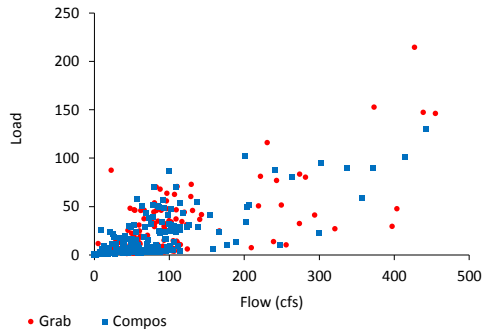
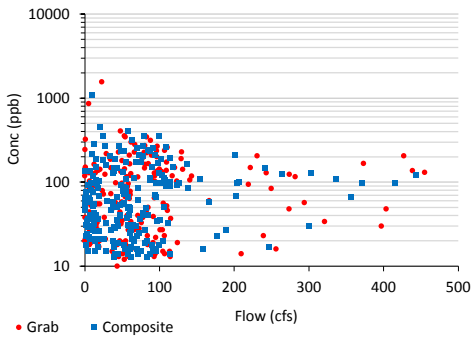
Variable: TP      Dates: 05/01/02 thru 07/31/14  
 Site: G344C      Grabs: G344C      Compos: G344C      Flows: G344C  
 Mean Flow: 25 cfs      FWM Conc: 93.5 ppb      Mean Load: 5.8 kg/day



Site = G344C, Var = TP



Site = G344C, Var = TP

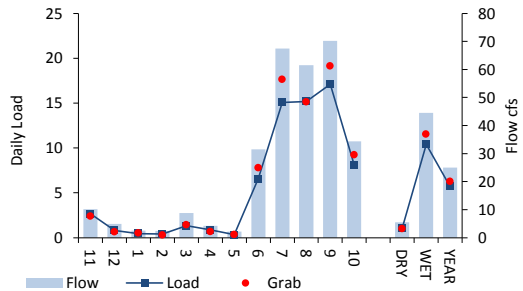
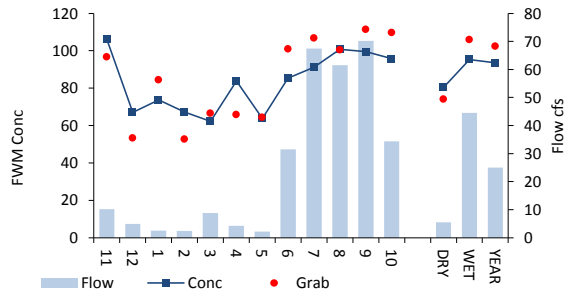
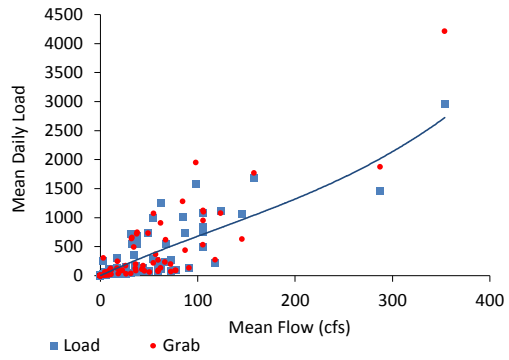
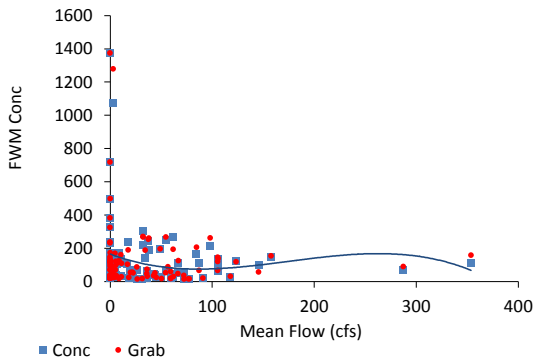
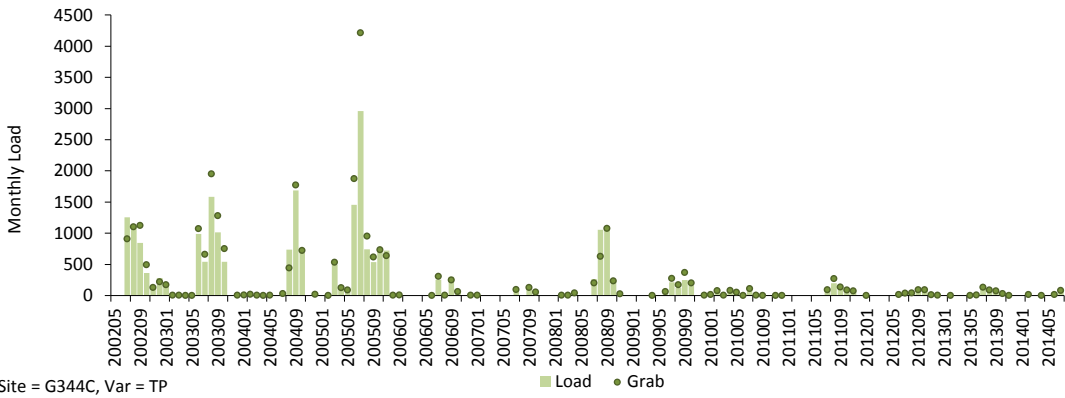
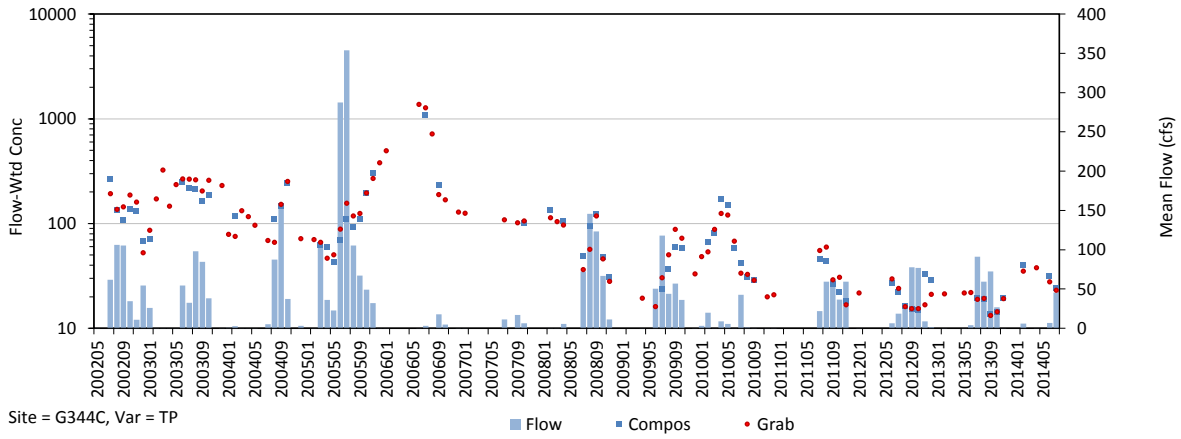


Trend in Grab Concs, Adjusted for Flow & Seasonal Variations

Trend = -22. % / yr, p = 0.000

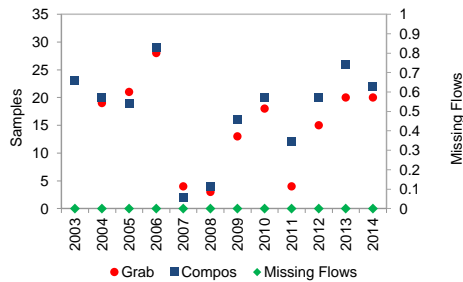
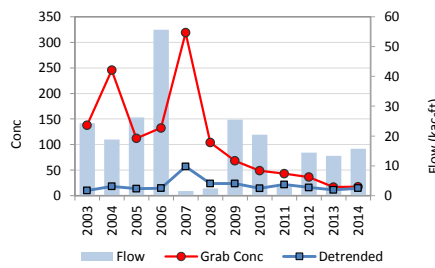
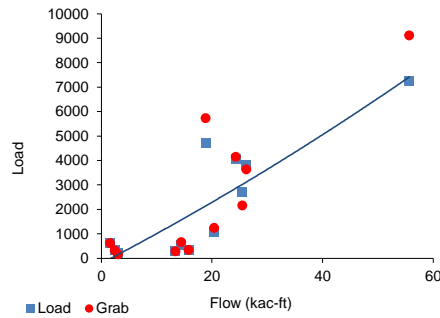
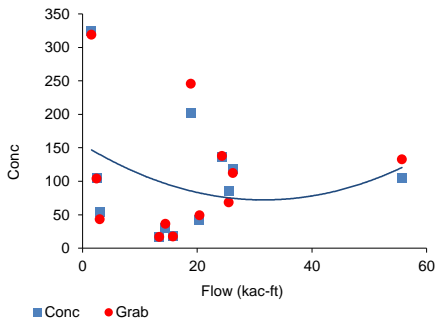
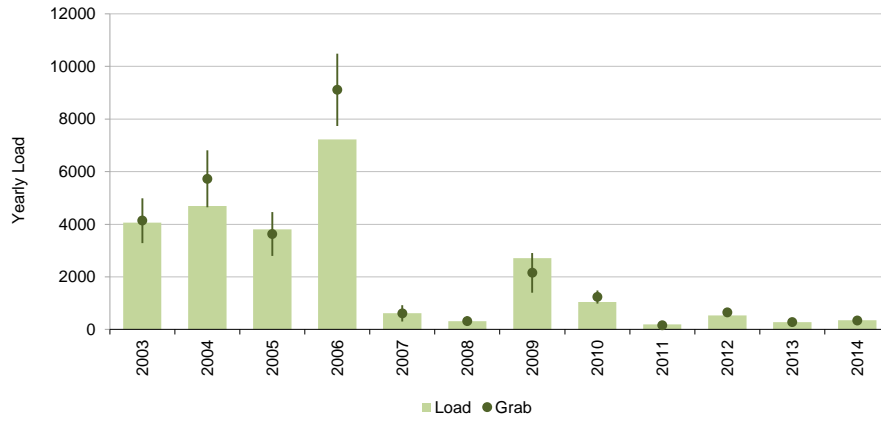
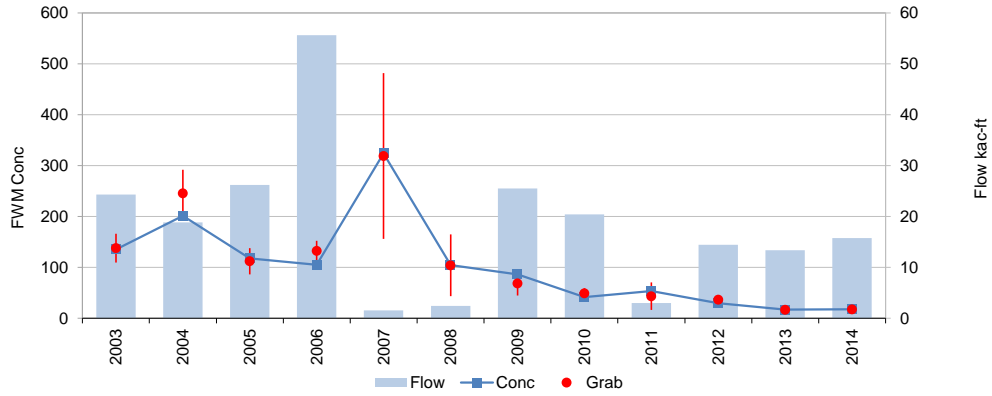
# Monthly Time Series

Variable: TP      Dates: 05/01/02 thru 07/31/14  
 Site: G344C      Grabs: G344C      Compos: G344C      Flows: G344C  
 Mean Flow: 25.3 cfs      FWM Conc: 93.5 ppb      Mean Load: 5.8 kg/day



Yearly Time Series

Variable: TP Dates: 05/01/02 thru 07/31/14  
 Site: G344C Grabs: G344C Compos: G344C Flows: G344C  
 Mean Flow: 18 kac-ft/yr FWM Conc: 93.5 ppb Mean Load: 2118 kg / yr



Trend = -22. % / yr, p = 0.000

	Samples	FWM	Std Error	Grab/Composite Ratio
Grabs	189	102.5	7.5	Integrated 1.10
Compos+Grabs	217	93.5	6.8	Paired Samp 1.09