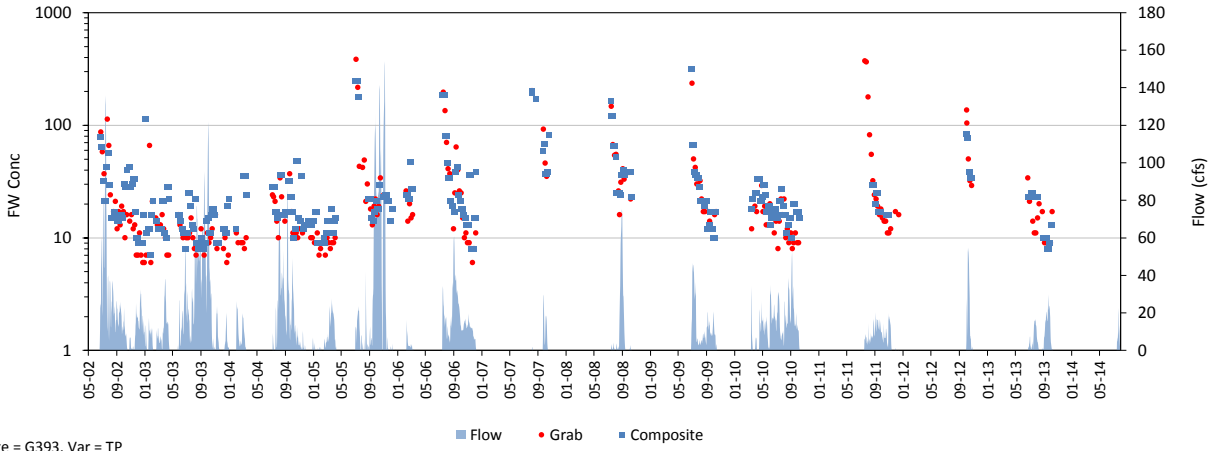
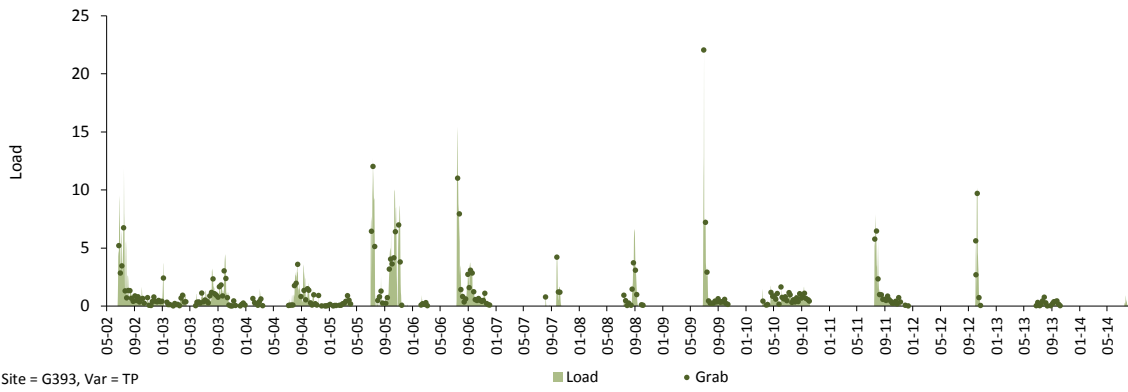


Daily Time Series

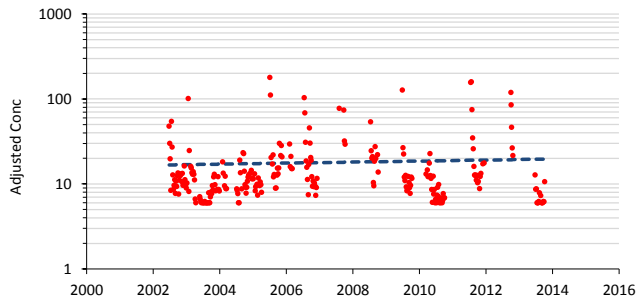
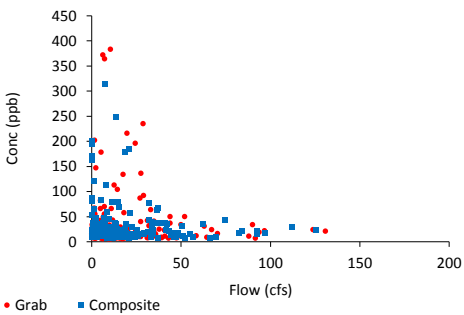
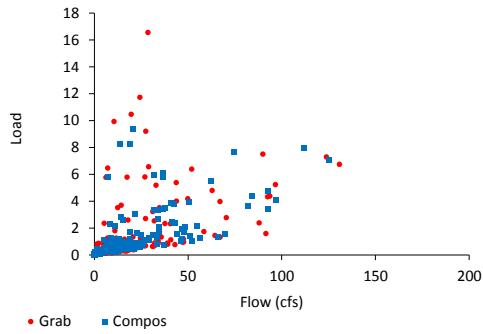
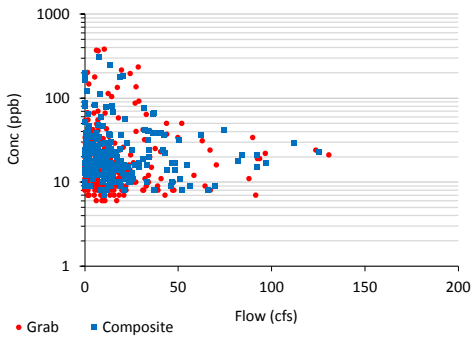
Variable: TP Dates: 05/01/02 thru 07/31/14
 Site: G393 Grabs: G393B Compos: G393B Flows: G393
 Mean Flow: 7 cfs FWM Conc: 26.9 ppb Mean Load: 0.5 kg/day



Site = G393, Var = TP



Site = G393, Var = TP

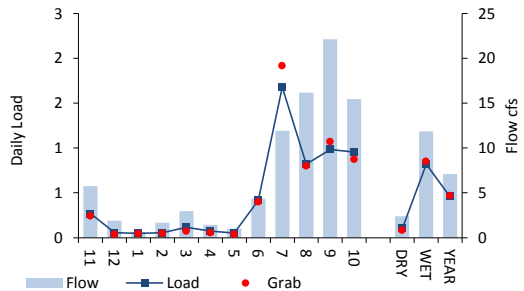
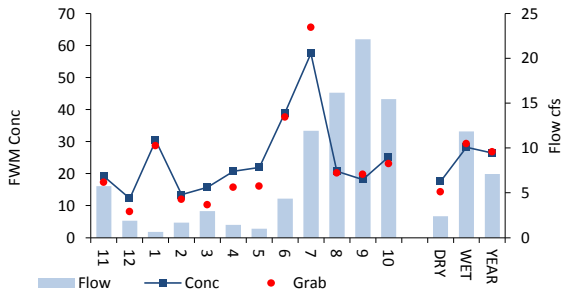
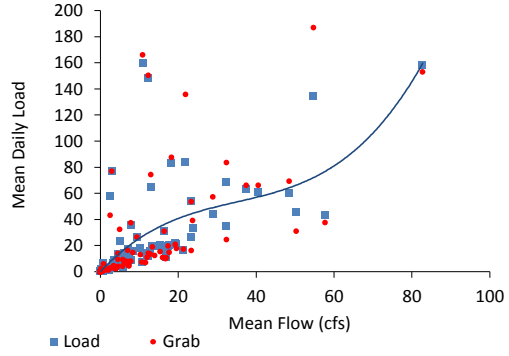
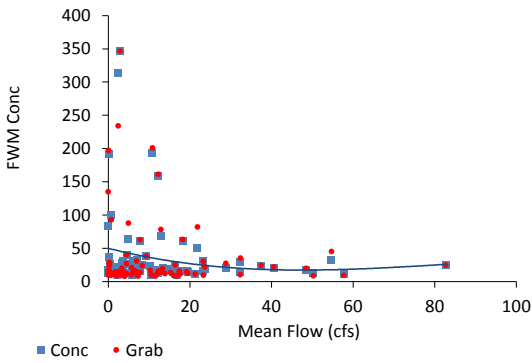
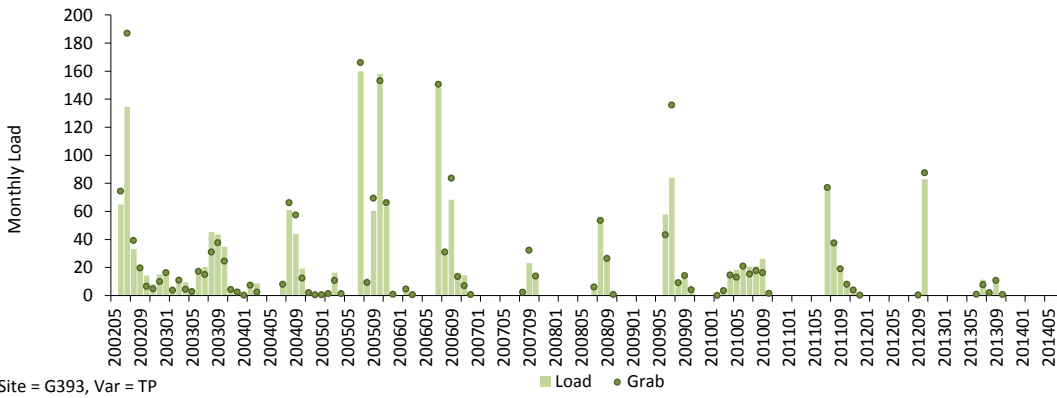
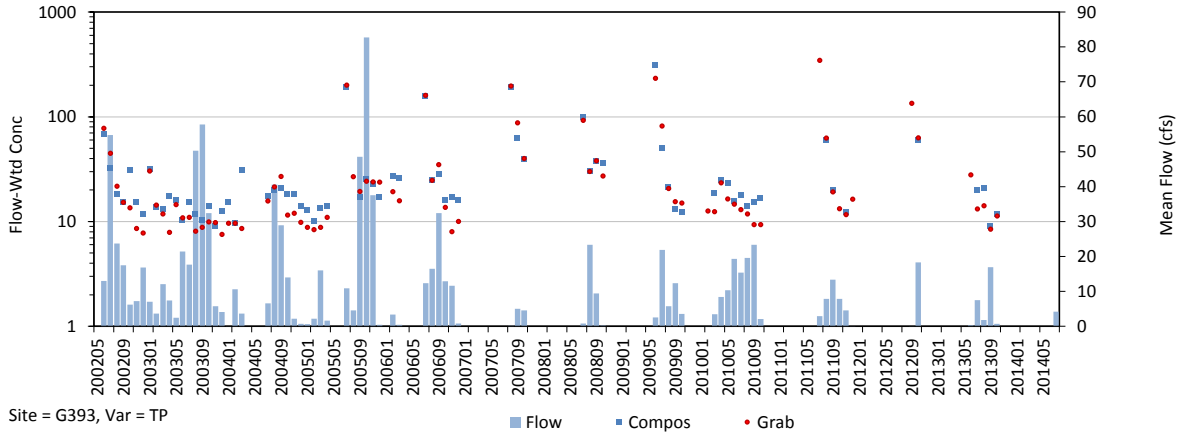


Trend in Grab Concs, Adjusted for Flow & Seasonal Variations

Trend = 1.4 % / yr, p = 0.341

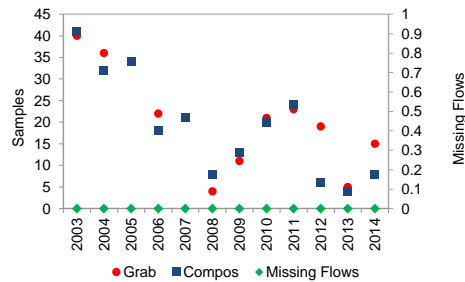
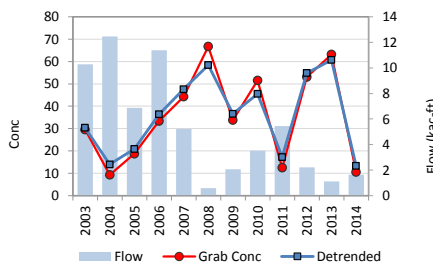
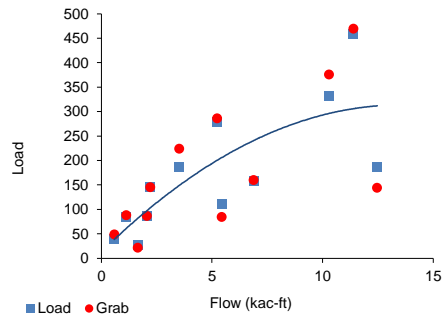
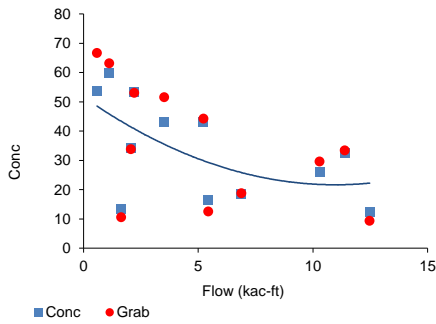
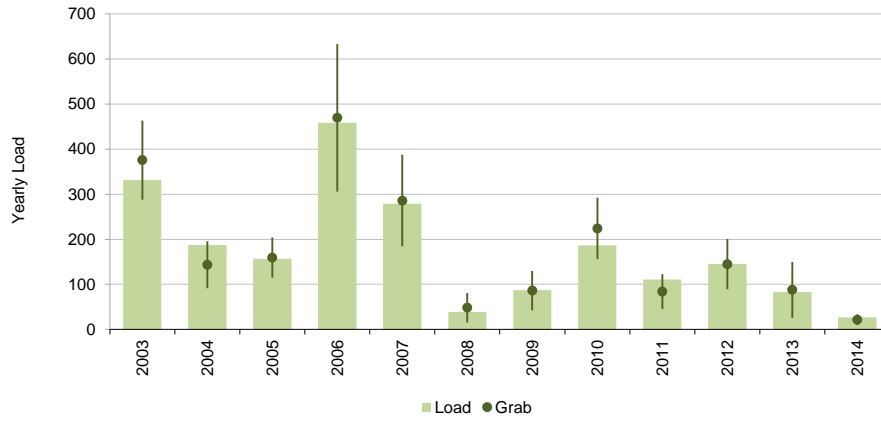
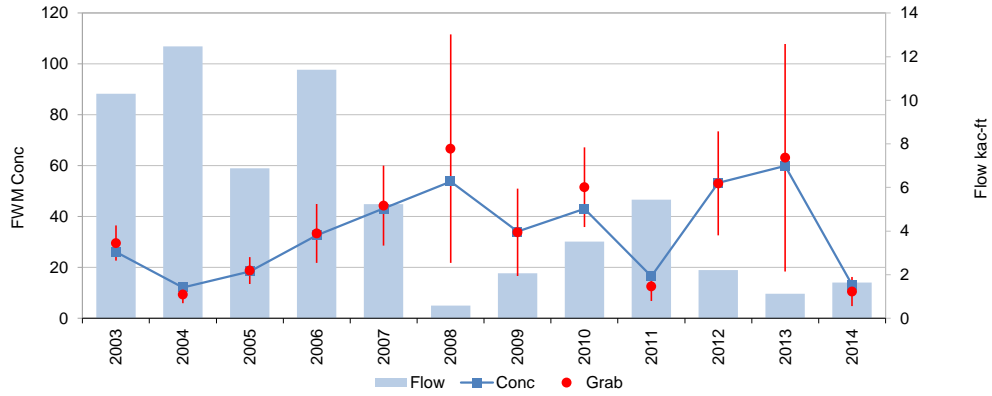
Monthly Time Series

Variable: TP Dates: 05/01/02 thru 07/31/14
 Site: G393 Grabs: G393B Compos: G393B Flows: G393
 Mean Flow: 7.1 cfs FWM Conc: 26.9 ppb Mean Load: 0.5 kg/day



Yearly Time Series

Variable: TP Dates: 05/01/02 thru 07/31/14
 Site: G393 Grabs: G393B Compos: G393B Flows: G393
 Mean Flow: 5 kac-ft/yr FWM Conc: 26.9 ppb Mean Load: 171 kg / yr



Trend = 1.4 % / yr, p = 0.341

	Samples	FWM	Std Error	Grab/Composite Ratio
Grabs	251	27.4	2.9	Integrated 1.02
Compos+Grabs	229	26.9	2.8	Paired Samp 0.94