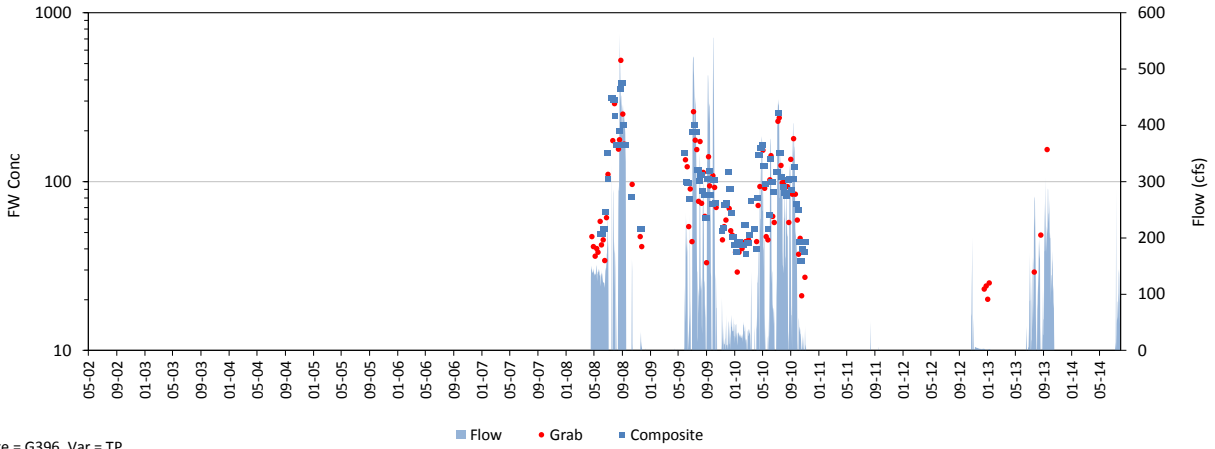
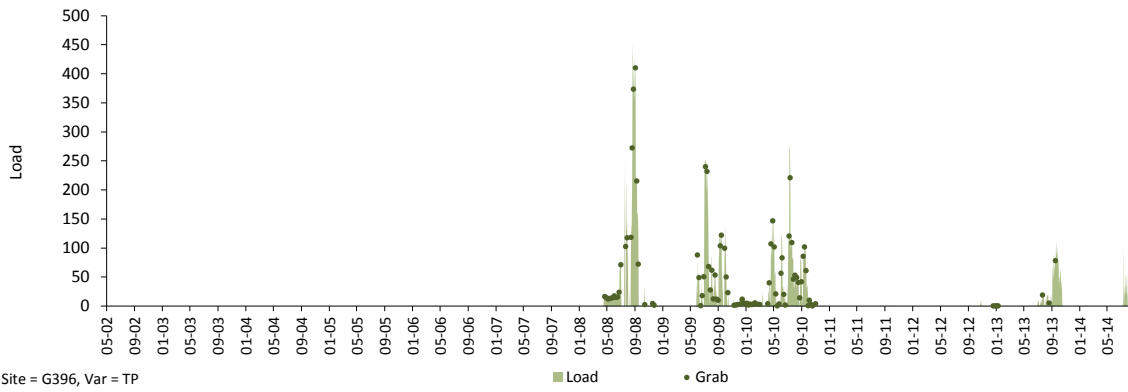


Daily Time Series

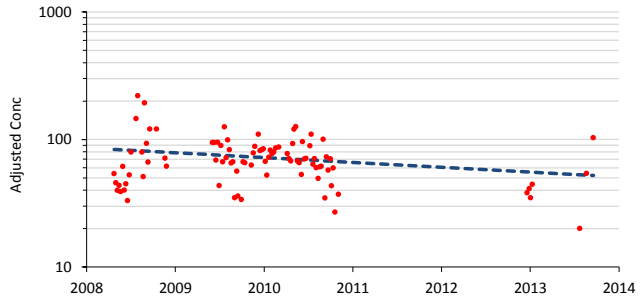
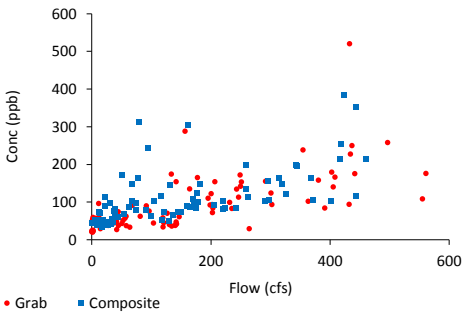
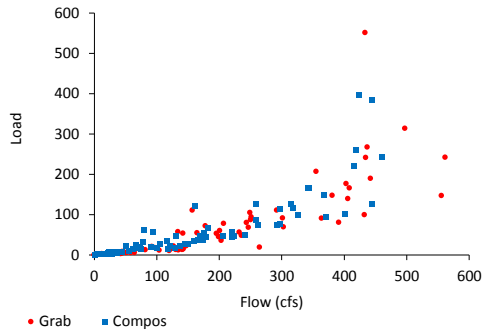
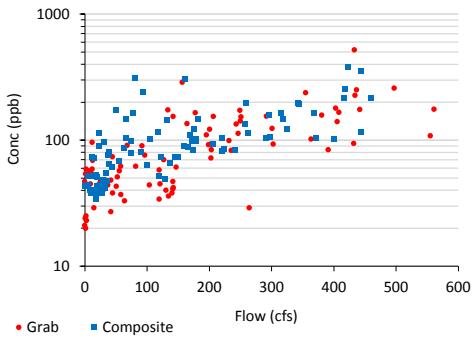
Variable: TP Dates: 05/01/02 thru 07/31/14
 Site: G396 Grabs: G396B Compos: G396B Flows: G396
 Mean Flow: 25 cfs FWM Conc: 134.5 ppb Mean Load: 8.2 kg/day



Site = G396, Var = TP



Site = G396, Var = TP

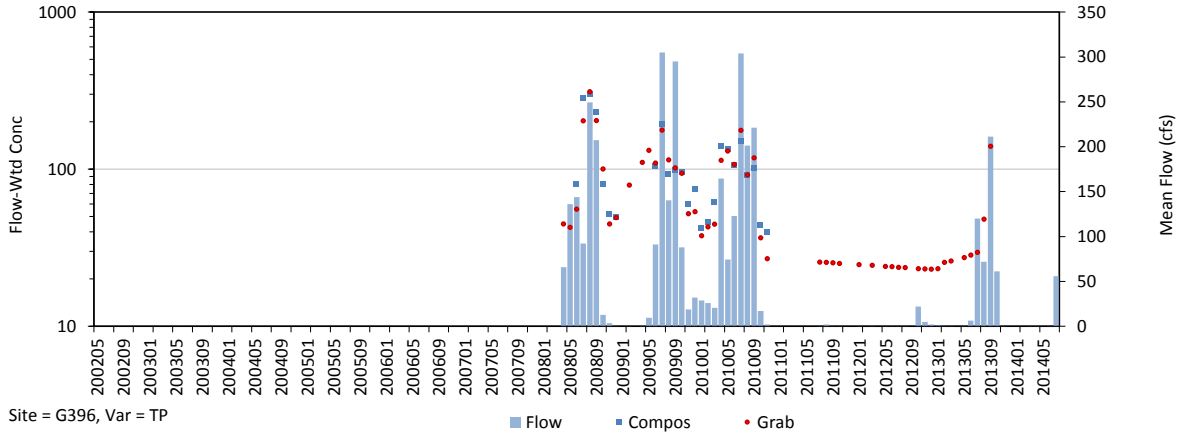


Trend in Grab Concs, Adjusted for Flow & Seasonal Variations

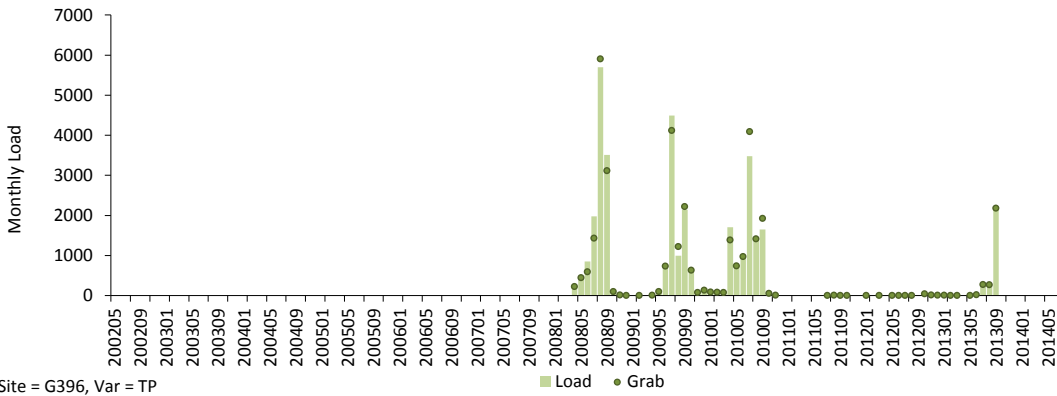
Trend = -8.7% / yr, p = 0.028

Monthly Time Series

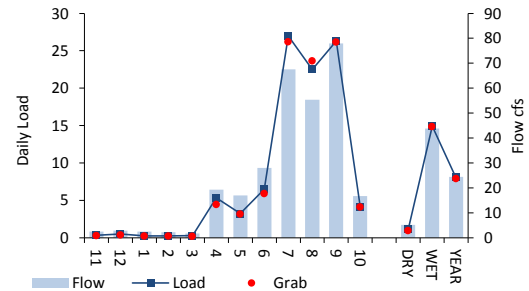
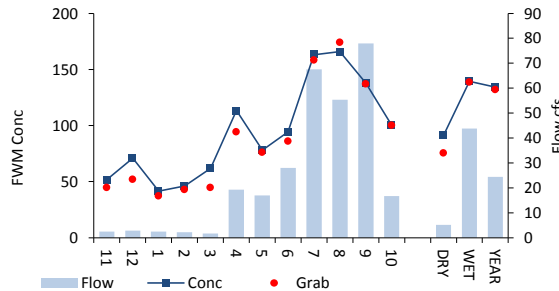
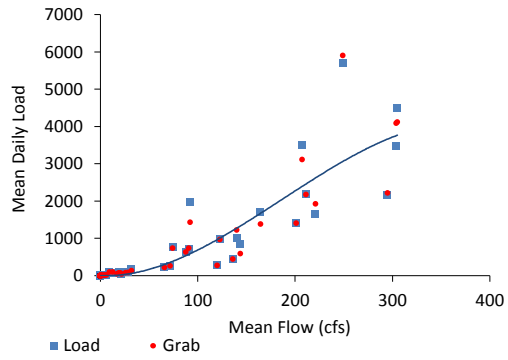
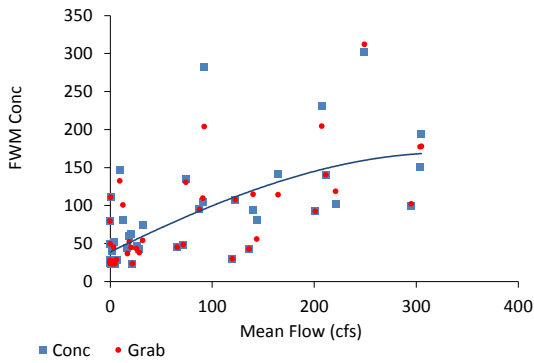
Variable: TP Dates: 05/01/02 thru 07/31/14
 Site: G396 Grabs: G396B Compos: G396B Flows: G396
 Mean Flow: 24.8 cfs FWM Conc: 134.5 ppb Mean Load: 8.2 kg/day



Site = G396, Var = TP

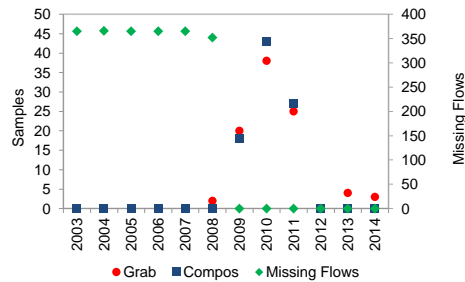
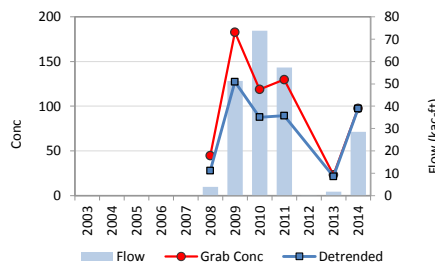
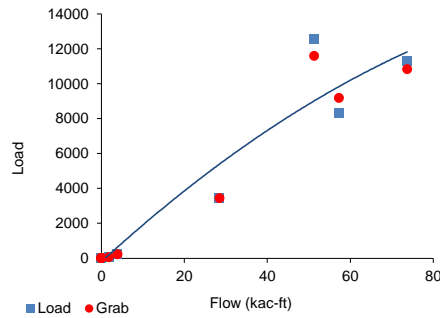
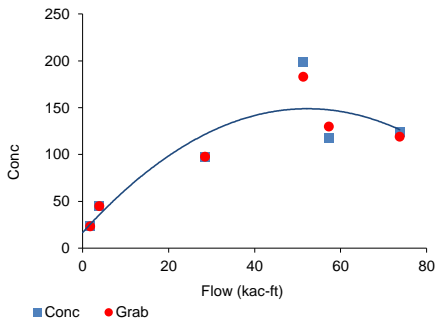
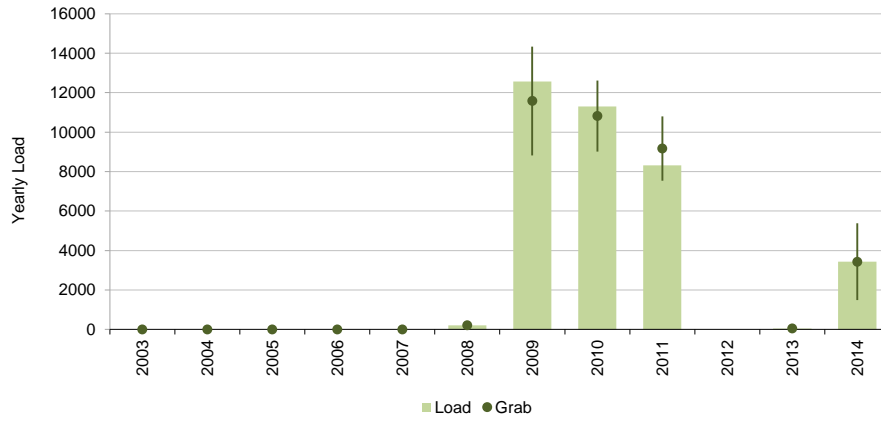
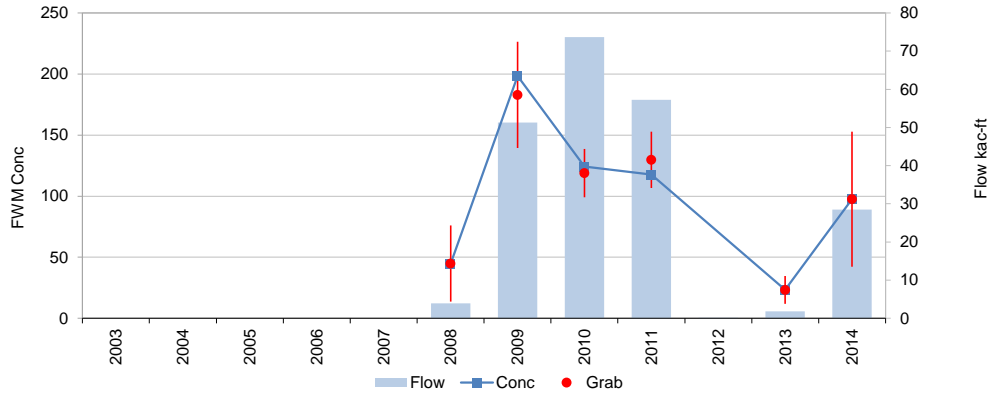


Site = G396, Var = TP



Yearly Time Series

Variable: TP Dates: 05/01/02 thru 07/31/14
 Site: G396 Grabs: G396B Compos: G396B Flows: G396
 Mean Flow: 18 kac-ft/yr FWM Conc: 134.5 ppb Mean Load: 2983 kg / yr



Trend = -8.7 % / yr, p = 0.028

| | Samples | FWM | Std Error | Grab/Composite Ratio |
|--------------|---------|-------|-----------|----------------------|
| Grabs | 92 | 132.2 | 13.5 | Integrated 0.98 |
| Compos+Grabs | 88 | 134.5 | 13.8 | Paired Samp 1.01 |