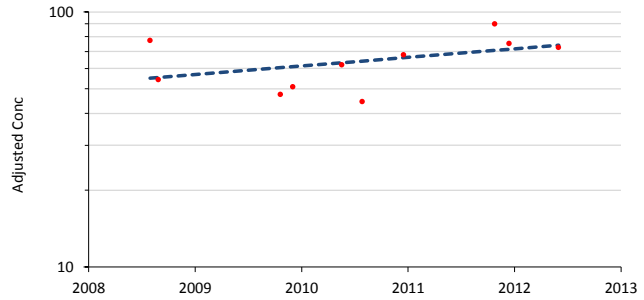
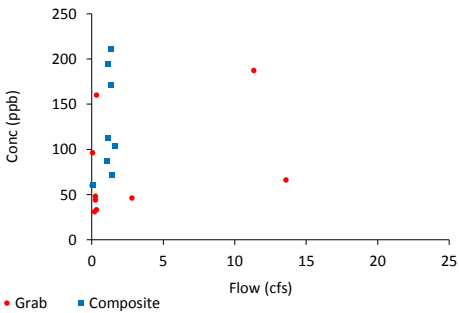
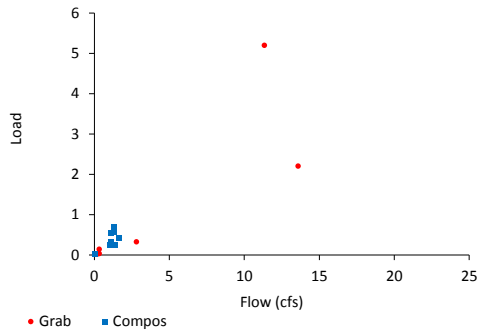
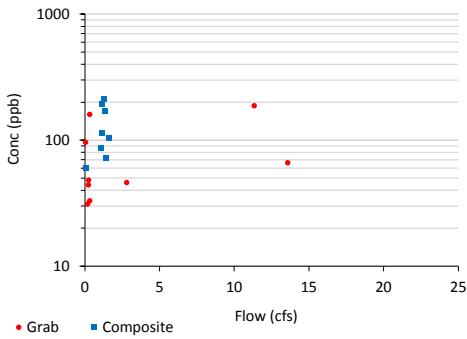
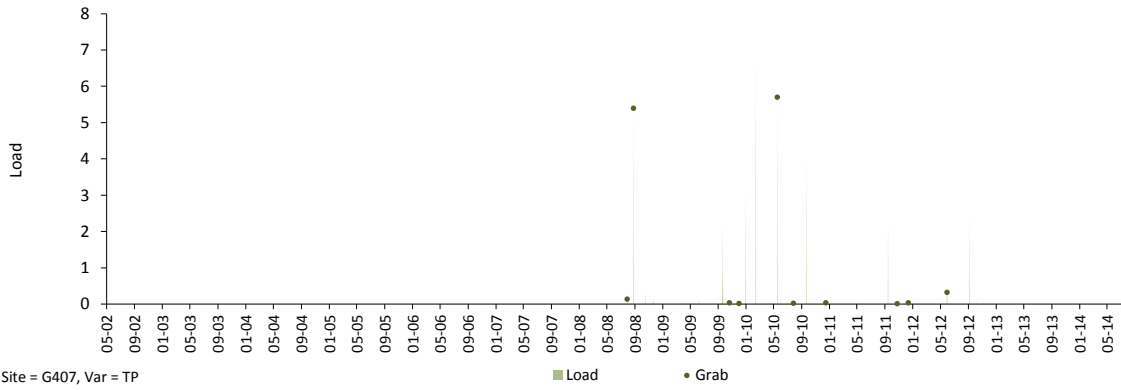
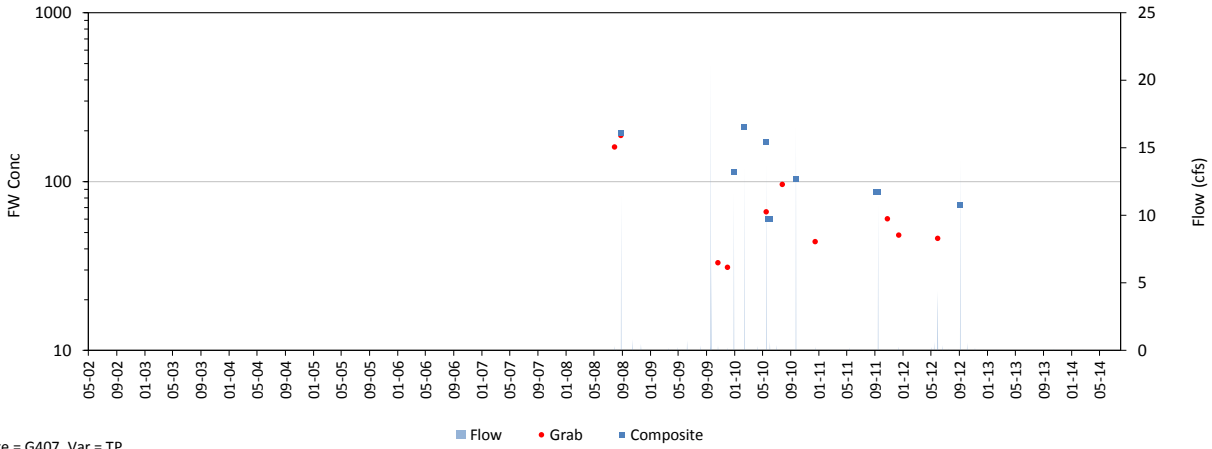


Daily Time Series

Variable: TP Dates: 05/01/02 thru 07/31/14
 Site: G407 Grabs: G407 Compos: G407 Flows: G407
 Mean Flow: 0 cfs FWM Conc: 107.7 ppb Mean Load: 0.0 kg/day

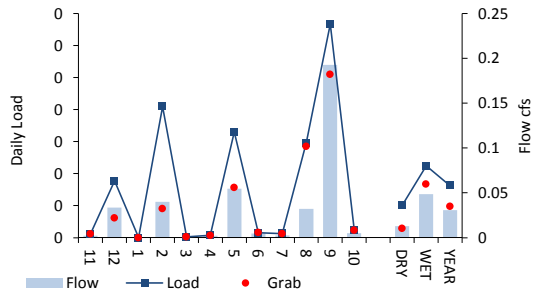
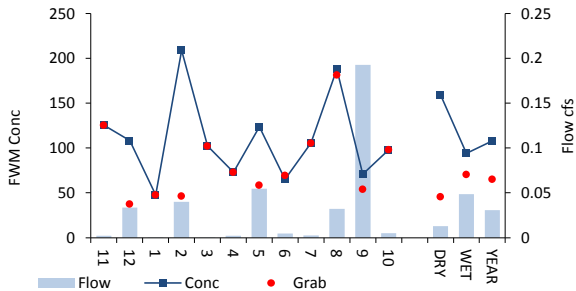
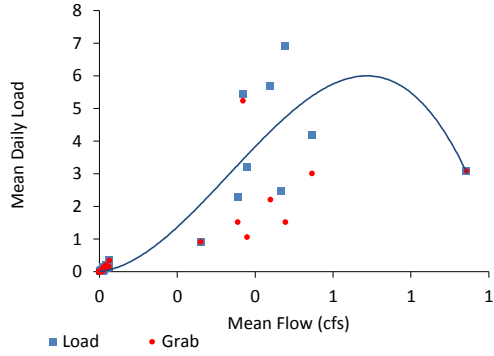
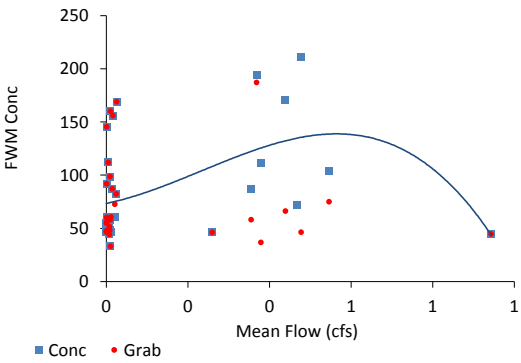
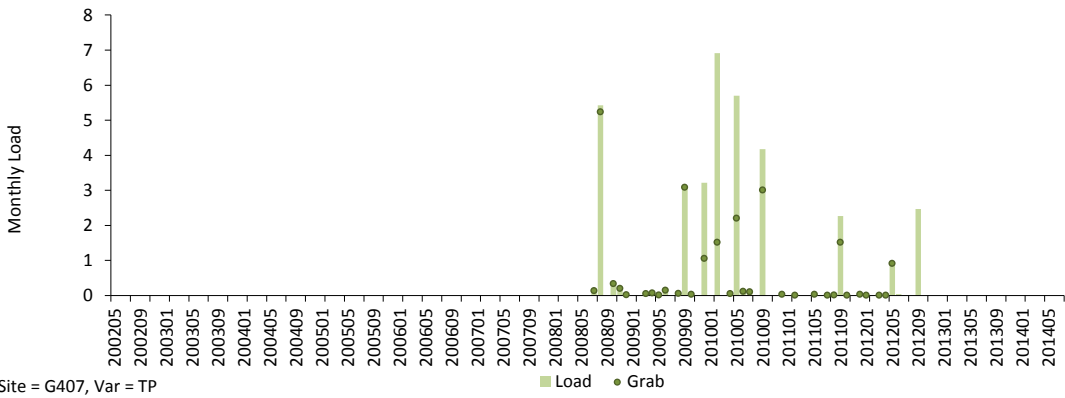
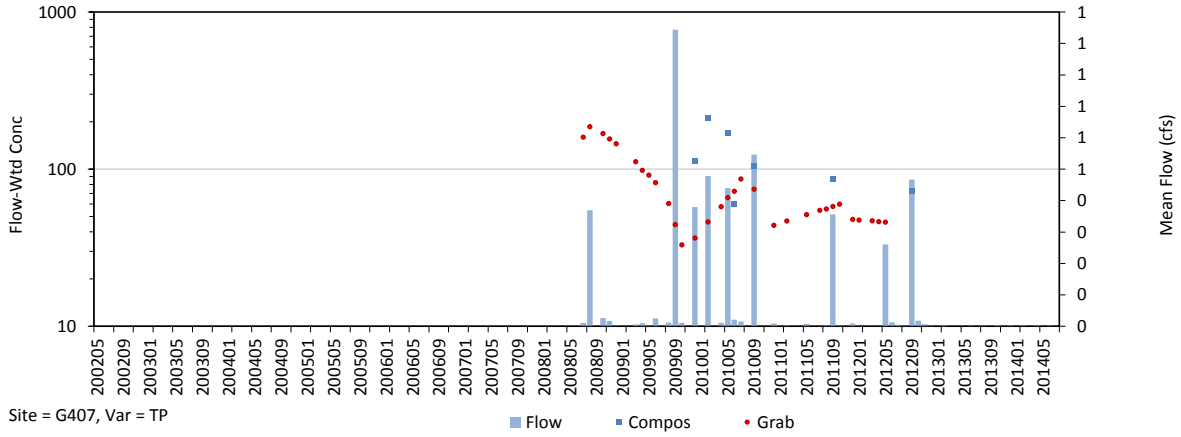


Trend in Grab Concs, Adjusted for Flow & Seasonal Variations

Trend = 7.7 % / yr, p = 0.692

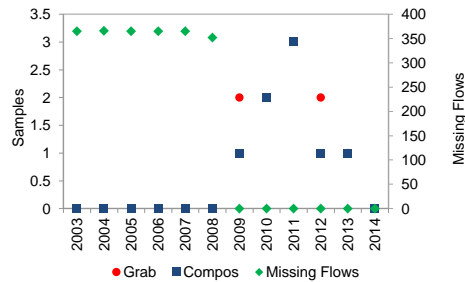
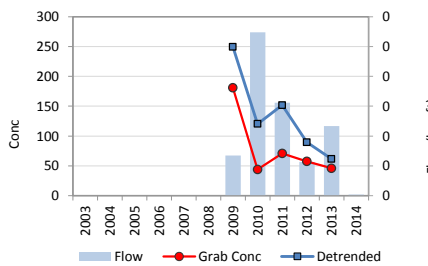
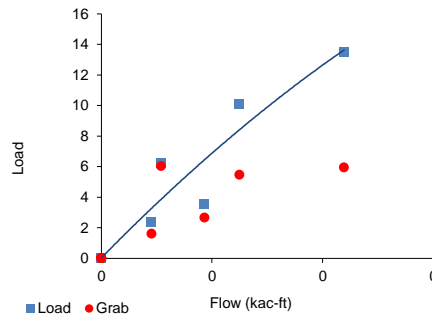
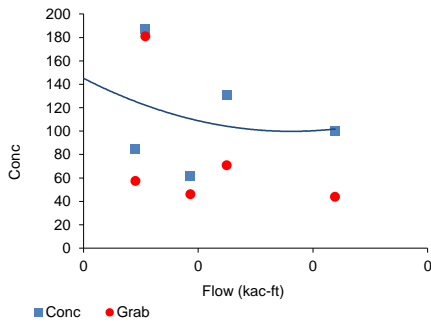
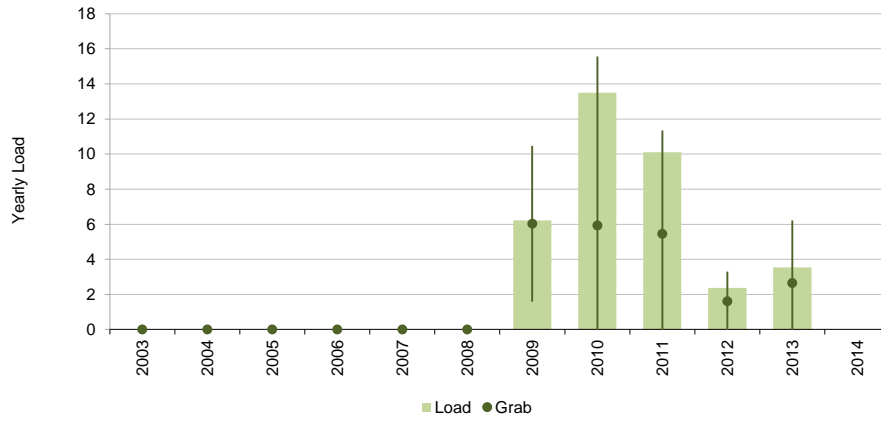
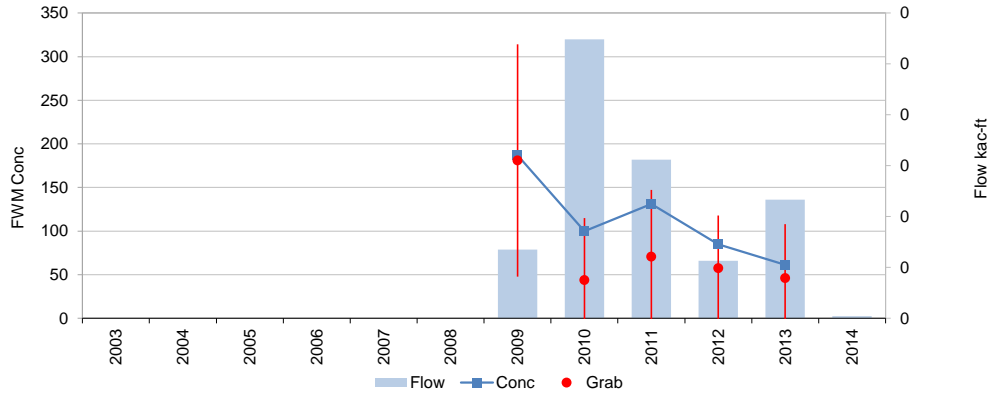
Monthly Time Series

Variable: TP Dates: 05/01/02 thru 07/31/14
 Site: G407 Grabs: G407 Compos: G407 Flows: G407
 Mean Flow: 0.0 cfs FWM Conc: 107.7 ppb Mean Load: 0.0 kg/day



Yearly Time Series

Variable: TP Dates: 05/01/02 thru 07/31/14
 Site: G407 Grabs: G407 Compos: G407 Flows: G407
 Mean Flow: 0 kac-ft/yr FWM Conc: 107.7 ppb Mean Load: 3 kg / yr



Trend = 7.7 % / yr, p = 0.692

	Samples	FWM	Std Error	Grab/Composite Ratio
Grabs	10	65.4	20.9	Integrated 0.61
Compos+Grabs	8	107.7	34.4	Paired Samp 0.67