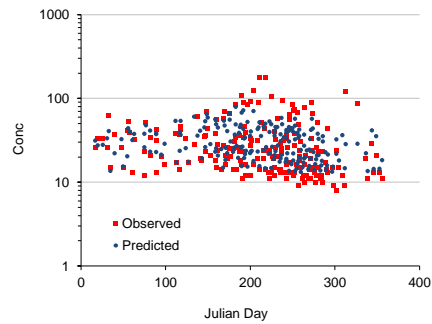
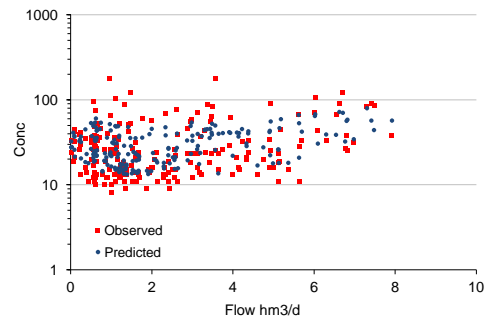
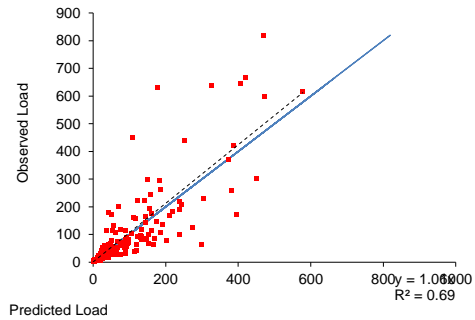
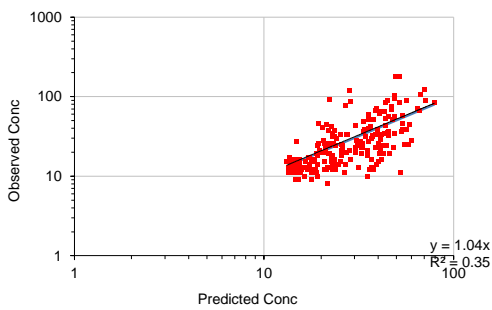
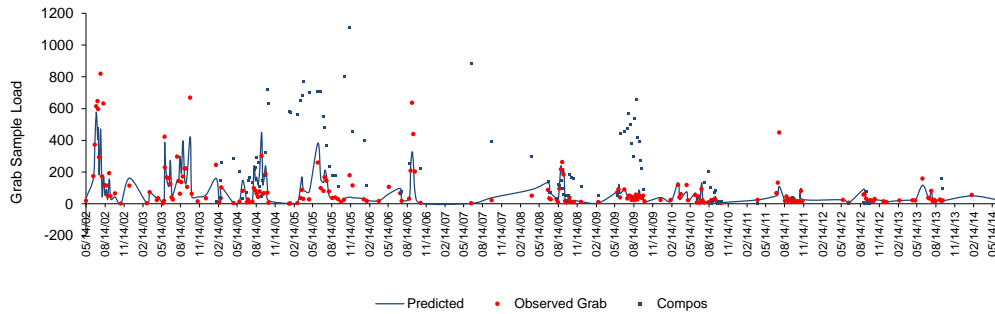
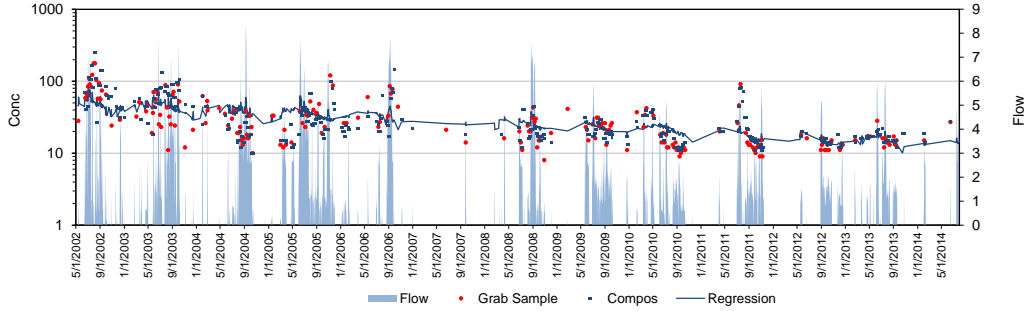
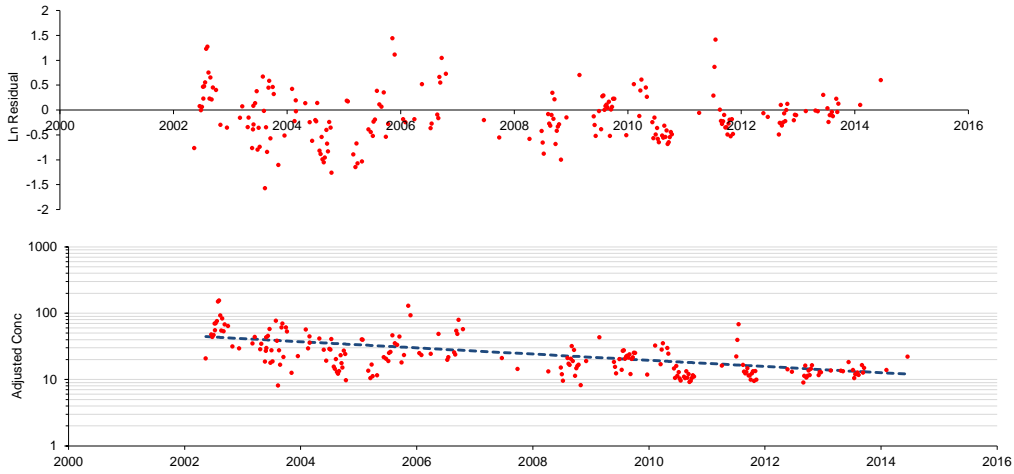


Regression Model Diagnostics

Site:	S8	Grabs:	S8	Compos:	S8	Flows:	S8
Log Conc R2:	0.45	Resid SE:	0.50	Log Load R2:	0.83	Trend =	-10.8 % / yr, p = 0.000
Regression Model for Grab-Sample Concentrations				Ln Conc = Function of Flow, Season, & Year		Theta = $2 \times \text{Pi} \times \text{Julian Day} / 365.25$	
Coef	Trend/Year	Cos Theta	Sin Theta	(Ln Q)^3	(Ln Q)^2	Ln Q hm3/d	Intercept
	-0.107825874	-0.109039706	0.104364605	0.099852961	-0.053120294	-0.109097062	219.6934031
Std Error	0.010561254	0.062829981	0.055241827	0.041569997	0.053342159	0.084566553	21.21549185
p	0.000	0.084	0.060	0.017	0.321	0.199	

Daily Results





Trend in Grab Concs, Adjusted for Flow & Seasonal Variations

Trend = -10.8 % / yr, $p = 0.000$

Monthly Results

