

80.3167°

80.3111°

80.3056°

80.3°

26.6778°

26.6722°

26.6667°

Vegetation and Land Management Department



Vegetation Management Division

# STA 1E Cell 1

## Soil Sampling Points



Culvert



Pump



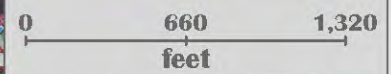
Spillway



Weir

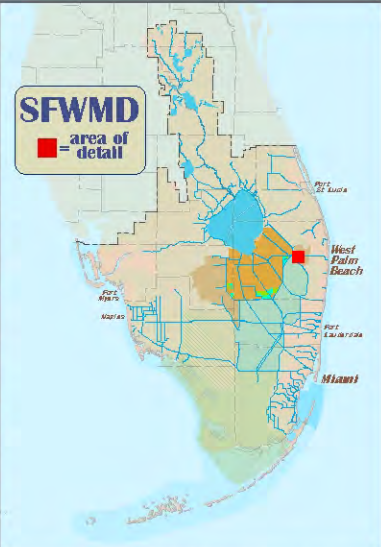


STA/cell boundary



imagery = CIR, 4/16/09, 1ft

1 26.673744 -80.312904	2 26.673724 -80.308831	3 26.673704 -80.304759	4 26.673684 -80.300686
5 26.670085 -80.312926	6 26.670066 -80.308853	7 26.670046 -80.304781	8 26.670026 -80.300708
9 26.666427 -80.312947	10 26.666407 -80.308875	11 26.666387 -80.304803	12 26.666367 -80.300731



**IMPORTANT DISCLAIMER** - This map is a conceptual or planning tool only. The South Florida Water Management District does not guarantee or make any representation regarding the information contained herein. It is not self-executing or binding, and does not affect the interests of any persons or properties, including any present or future right of use of real property.

80.3167°

80.3111°

80.3056°

80.3°

26.6611°

26.6556°

26.65°

Vegetation and Land Management Department



Vegetation Management Division

STA 1E Cell 2

Soil Sampling Points



Culvert



Pump



Spillway



Weir



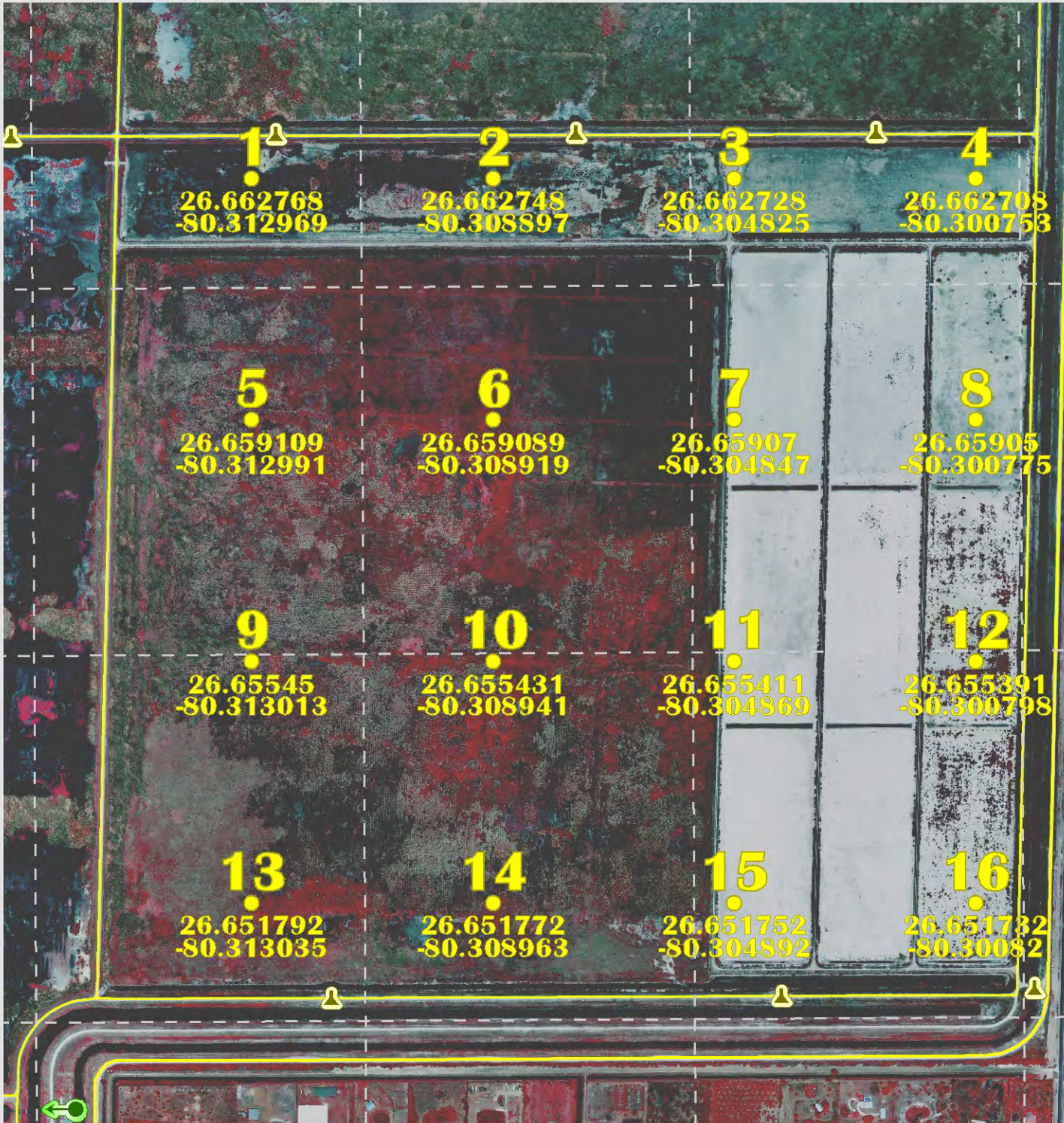
STA/cell boundary



0 660 1,320 feet

imagery = CIR, 4/16/09, 1ft

SFWMD area of detail



26.662768  
-80.312969

26.662748  
-80.308897

26.662728  
-80.304825

26.662708  
-80.300753

26.659109  
-80.312991

26.659089  
-80.308919

26.65907  
-80.304847

26.65905  
-80.300775

26.65545  
-80.313013

26.655431  
-80.308941

26.655411  
-80.304869

26.655391  
-80.300798

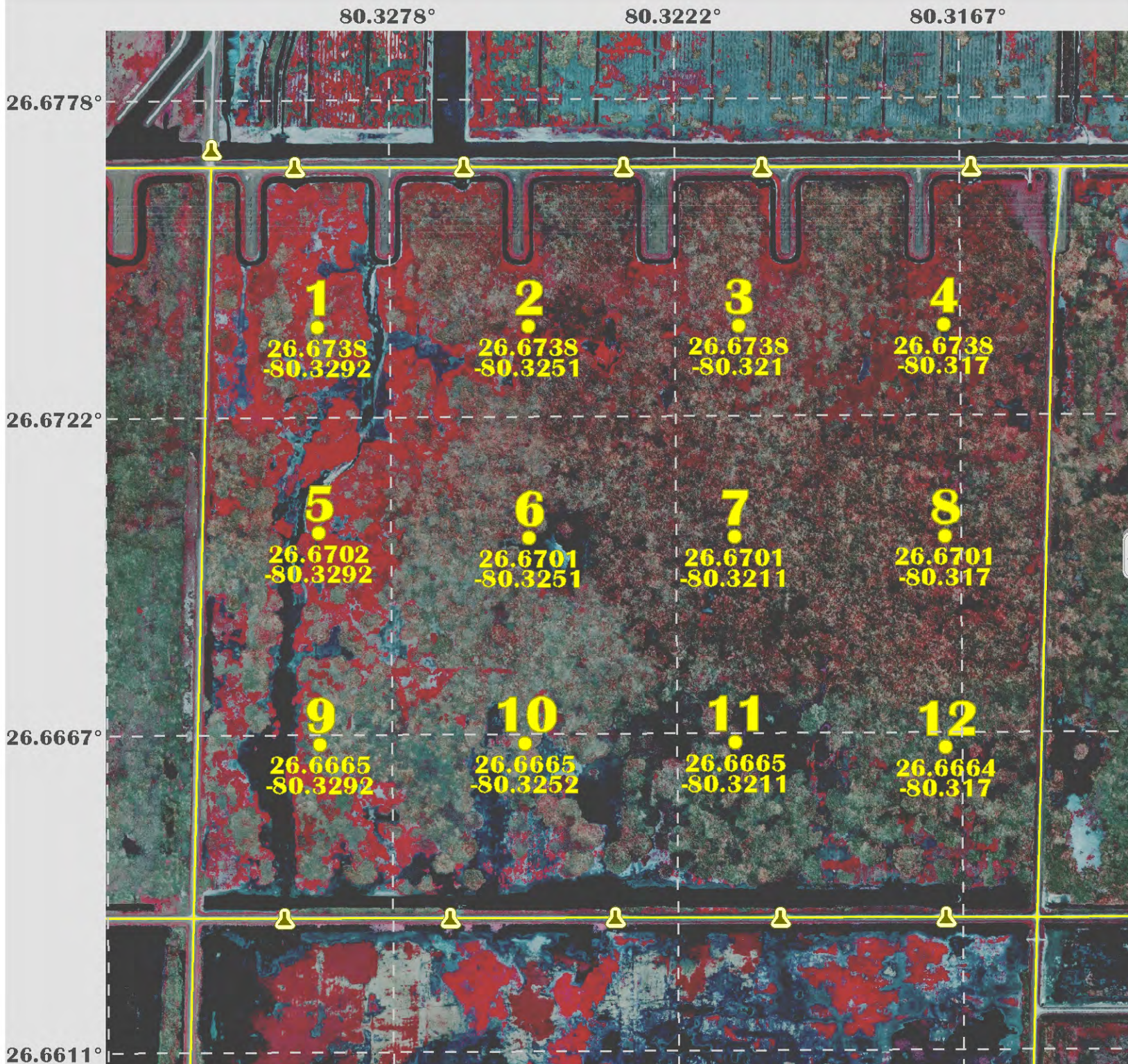
26.651792  
-80.313035

26.651772  
-80.308963

26.651752  
-80.304892

26.651732  
-80.30082

IMPORTANT DISCLAIMER: This map is a conceptual or planning tool only. The South Florida Water Management District does not guarantee or make any representation regarding the information contained herein. It is not self-executing or binding, and does not affect the interests of any persons or properties, including any present or future right or use of real property.



Vegetation and Land Management  
Department

**Vegetation  
Management  
Division**



**STA 1E  
Cell 3**

**Soil Sampling  
Points**

●

**Culvert**      **Pump**

▲      ↶

**Spillway**      **Weir**

▭      ◻



**STA/cell  
boundary**

▭

0      660      1,320  
feet

imagery = CIR, 4/16/09, 1ft



**IMPORTANT  
DISCLAIMER** • This map is a conceptual or planning tool only. The South Florida Water Management District does not guarantee or make any representation regarding the information contained herein. It is not self-executing or binding, and does not affect the interests of any persons or properties, including any present or future right of use of real property.

80.3333°

80.3278°

80.3222°

80.3167°

Vegetation and Land Management Department



Vegetation Management Division

STA 1E Cell 4N

Soil Sampling Points



Culvert



Pump



Spillway



Weir



STA/cell boundary



0 660 1,320 feet

imagery = CIR, 4/16/09, 1ft

26.6611°

26.6556°

26.65°

1 26.6628 -80.3293	2 26.6628 -80.3252	3 26.6628 -80.3211	4 26.6628 -80.317
--------------------------	--------------------------	--------------------------	-------------------------

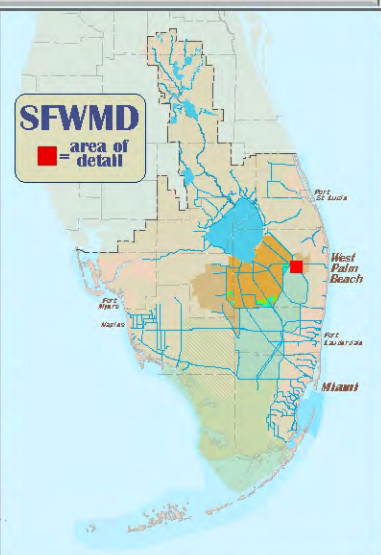
5 26.6592 -80.3293	6 26.6592 -80.3252	7 26.6591 -80.3211	8 26.6591 -80.3171
--------------------------	--------------------------	--------------------------	--------------------------

9 26.6555 -80.3293	10 26.6555 -80.3252	11 26.6555 -80.3212	12 26.6555 -80.3171
--------------------------	---------------------------	---------------------------	---------------------------

13 26.6519 -80.3293	14 26.6518 -80.3252	15 26.6518 -80.3212	16 26.6518 -80.3171
---------------------------	---------------------------	---------------------------	---------------------------

IMPORTANT DISCLAIMER: This map is a conceptual or planning tool only. The South Florida Water Management District does not guarantee or make any representation regarding the information contained herein. It is not self-executing or binding, and does not affect the interests of any persons or properties, including any present or future right of use of real property.

wad.stwm.d.gov\DFSRoot\Data\ez\_support\business\STA\STA\_GIS\Map\_Facilities\SamplePoints





**IMPORTANT DISCLAIMER** • This map is a conceptual or planning tool only. The South Florida Water Management District does not guarantee or make any representation regarding the information contained herein. It is not self-executing or binding, and does not affect the interests of any persons or properties, including any present or future right or use of real property.

80.3444°

80.3389°

80.3333°

26.6778°

26.6722°

26.6667°

Vegetation and Land Management Department



Vegetation Management Division

STA 1E Cell 5

Soil Sampling Points



Culvert



Pump



Spillway



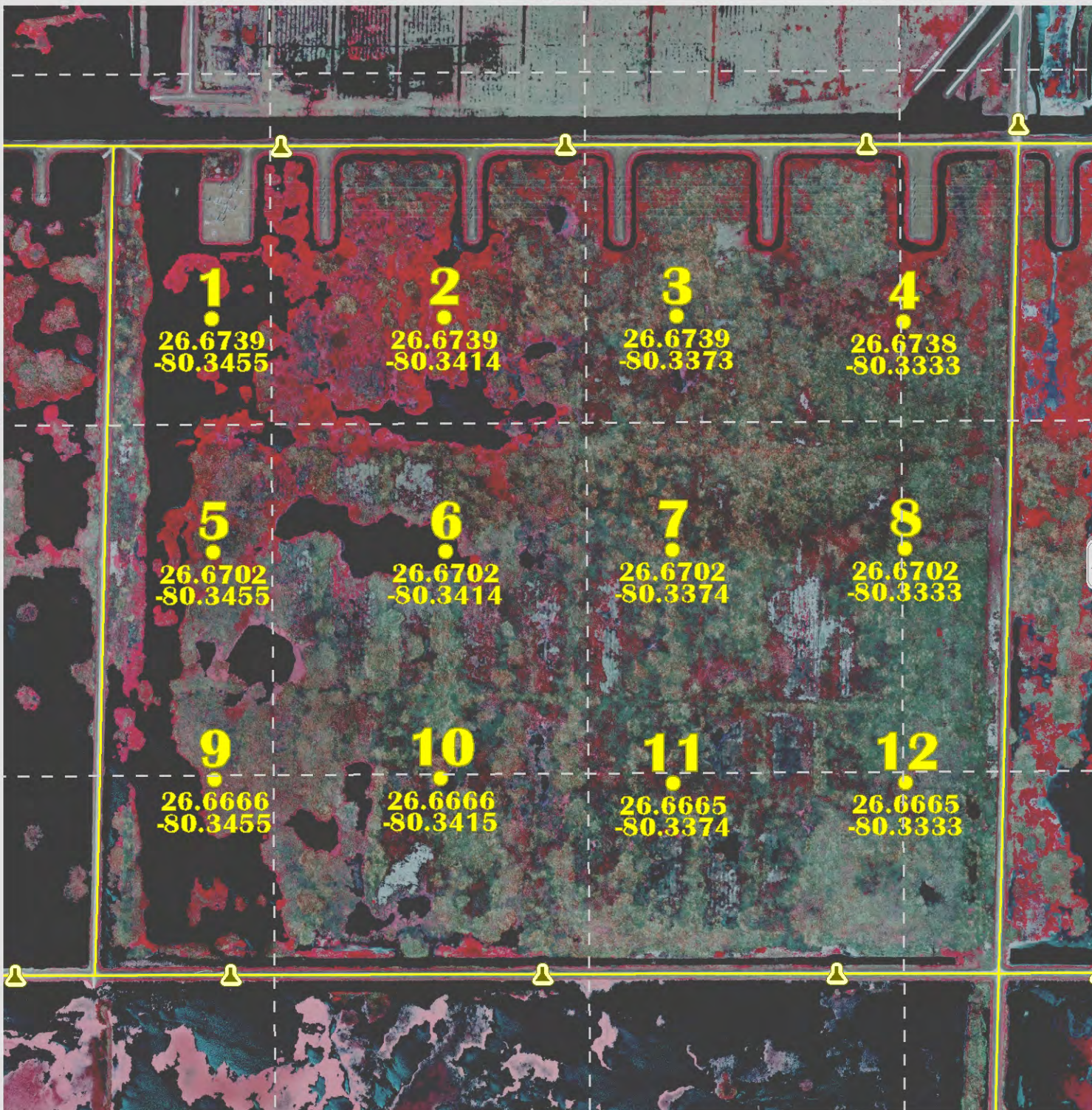
Weir



STA/cell boundary

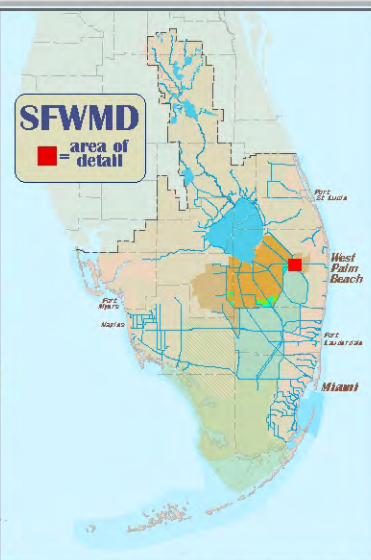
0 660 1,320 feet

imagery = CIR, 4/16/09, 1ft



SFWMD

■ = area of detail



IMPORTANT DISCLAIMER: This map is a conceptual or planning tool only. The South Florida Water Management District does not guarantee or make any representation regarding the information contained herein. It is not self-executing or binding, and does not affect the interests of any persons or properties, including any present or future right or use of real property.

wad.stw.md.gov\DFSRoot\Data\ez\_support\business\STA\STA\_GIS\GIS\_Facilities\SamplePoints

80.3583°

80.35°

80.3417°

80.3333°

Vegetation and Land Management Department



Vegetation Management Division

STA 1E Cell 6

Soil Sampling Points



Culvert



Pump



Spillway



Weir



STA/cell boundary



0 660 1,320 1,980 feet

imagery = CIR, 4/16/09, 1ft

26.6583°

26.65°

26.6417°

1 26.663 -80.3537	2 26.6629 -80.3496	3 26.6629 -80.3455	4 26.6629 -80.3415	5 26.6629 -80.3374	6 26.6629 -80.3333
-------------------------	--------------------------	--------------------------	--------------------------	--------------------------	--------------------------

7 26.6593 -80.3496	8 26.6593 -80.3456	9 26.6592 -80.3415	10 26.6592 -80.3374	11 26.6592 -80.3334
--------------------------	--------------------------	--------------------------	---------------------------	---------------------------

12 26.6556 -80.3497	13 26.6556 -80.3456	14 26.6556 -80.3415	15 26.6556 -80.3374	16 26.6555 -80.3334
---------------------------	---------------------------	---------------------------	---------------------------	---------------------------

17 26.6519 -80.3456	18 26.6519 -80.3415	19 26.6519 -80.3375	20 26.6519 -80.3334
---------------------------	---------------------------	---------------------------	---------------------------

21 26.6483 -80.3456	22 26.6483 -80.3416	23 26.6482 -80.3375	24 26.6482 -80.3334
---------------------------	---------------------------	---------------------------	---------------------------

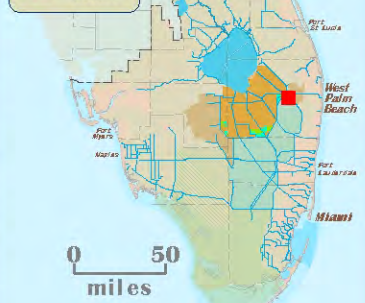
25 26.6446 -80.3416	26 26.6446 -80.3375	27 26.6446 -80.3334
---------------------------	---------------------------	---------------------------

28 26.6409 -80.3375	29 26.6409 -80.3335
---------------------------	---------------------------



SFWMD

area of detail



0 50 miles

IMPORTANT DISCLAIMER: This map is a conceptual or planning tool only. The South Florida Water Management District does not guarantee or make any representation regarding the information contained herein. It is not self-executing or binding, and does not affect the interests of any persons or properties, including any present or future right or use of real property.

\\wad.stw.md.gov\DFSRoot\Data\ez\_support\business\STA\STA\_GIS\GIS\_Facilities\SamplePoints

80.3611°

80.3556°

80.35°

26.6778°

26.6722°

26.6667°

Vegetation and Land Management Department



Vegetation Management Division

STA 1E Cell 7

Soil Sampling Points



Culvert



Pump



Spillway



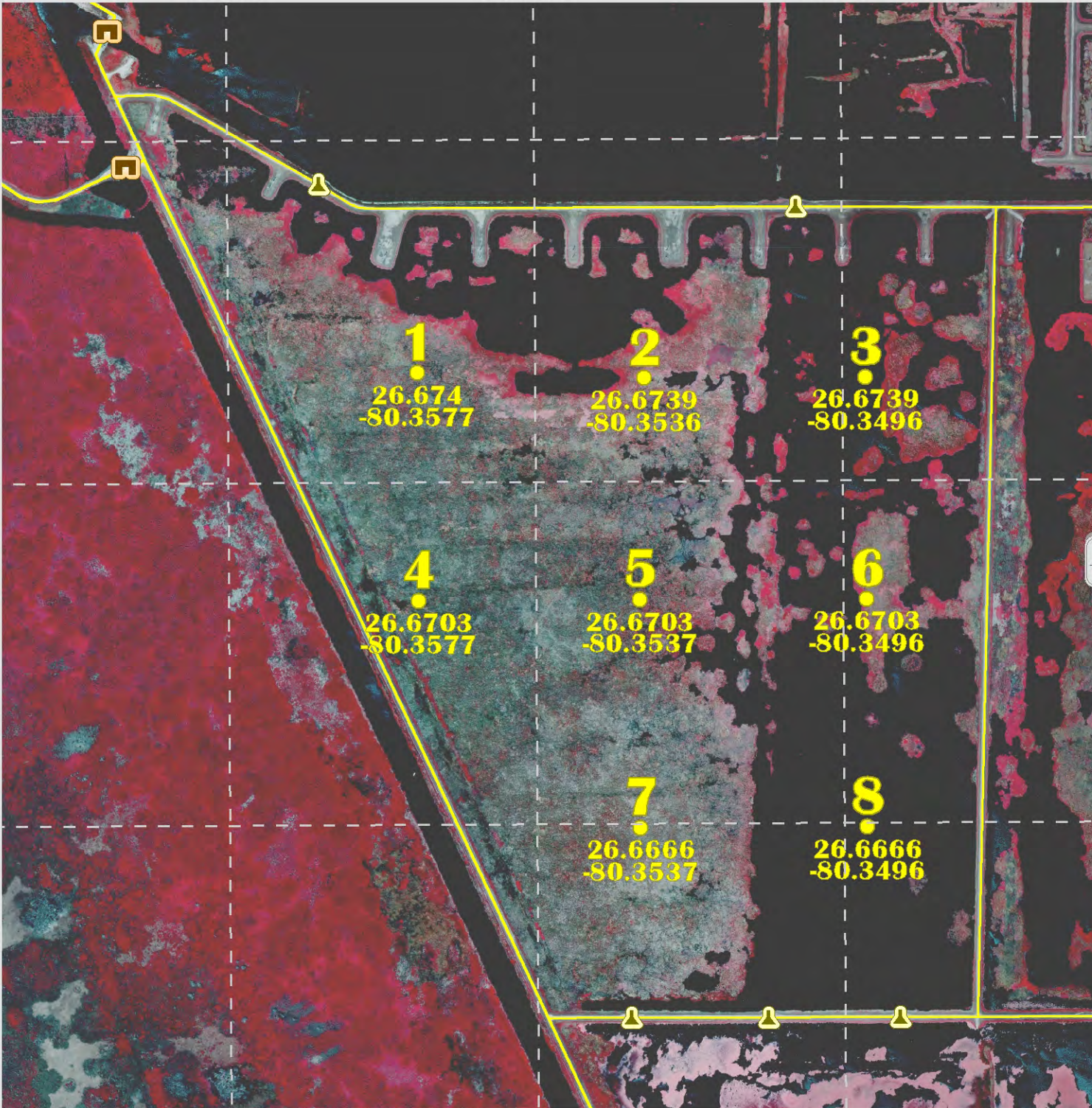
Weir



STA/cell boundary

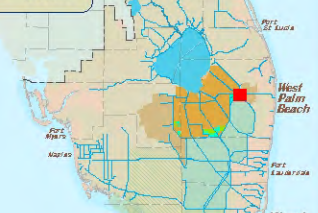
0 660 1,320 feet

imagery = CIR, 4/16/09, 1ft



SFWMD

area of detail



IMPORTANT DISCLAIMER: This map is a conceptual or planning tool only. The South Florida Water Management District does not guarantee or make any representation regarding the information contained herein. It is not self-executing or binding, and does not affect the interests of any persons or properties, including any present or future right or use of real property.

wad.stw.md.gov\DFSRoot\Data\ez\_support\business\STA\STA\_GIS\GIS\_Facilities\SamplePoints



80.425°

80.4167°

80.4083°

80.4°

Vegetation and Land Management Department



Vegetation Management Division

STA 1W Cell 1A

Soil Sampling Points



Culvert



Pump



Spillway



Weir



STA/cell boundary

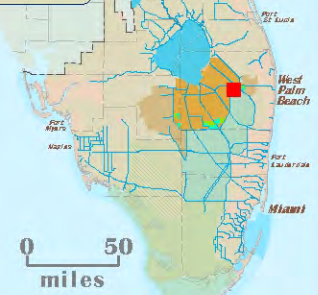


0 660 1,320 1,980 feet

imagery = CIR, 4/16/09, 1ft

SFWMD

area of detail



26.6583°

26.65°

26.6417°

A

B

C

D

26.6583  
-80.4113

26.6583  
-80.4073

26.6582  
-80.4032

26.6582  
-80.3991

E

F

G

26.6546  
-80.4114

26.6546  
-80.4073

26.6546  
-80.4032

H

I

J

26.651  
-80.4154

26.651  
-80.4114

26.651  
-80.4073

K

L

M

N

26.6473  
-80.4196

26.6473  
-80.4155

26.6473  
-80.4114

26.6473  
-80.4073

O

P

Q

26.6436  
-80.4196

26.6436  
-80.4155

26.6436  
-80.4114

IMPORTANT DISCLAIMER: This map is a conceptual or planning tool only. The South Florida Water Management District does not guarantee or make any representation regarding the information contained herein. It is not self-executing or binding, and does not affect the interests of any persons or properties, including any present or future right or use of real property.

wad.sfwmd.gov\DFSRoot\Data\ez\_support\business\STA\STA\_GIS\VI\_Facilities\SamplePoints

80.4333°

80.425°

80.4167°

80.408

26.6417°

26.6333°

26.625°

Vegetation and Land Management Department



Vegetation Management Division

STA 1W Cell 1B

Soil Sampling Points



Culvert



Pump



Spillway



Weir



STA/cell boundary

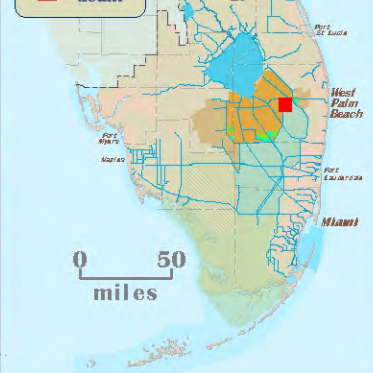


0 660 1,320 1,980 feet

imagery = CIR, 4/16/09, 1ft

SFWMD

area of detail



0 50 miles

IMPORTANT DISCLAIMER: This map is a conceptual or planning tool only. The South Florida Water Management District does not guarantee or make any representation regarding the information contained herein. It is not self-executing or binding, and does not affect the interests of any persons or properties, including any present or future right or use of real property.

wad.stw.md.gov\DFS\Root\Data\ez\_support\business\STA\STA\_GIS\GIS\_Facilities\SamplePoints

80.4417°

80.4333°

80.425°

80.4167°

Vegetation and Land Management Department



Vegetation Management Division

STA 1W Cell 2A

Soil Sampling Points



Culvert



Pump



Spillway



Weir



STA/cell boundary

0 660 1,320 1,980 feet

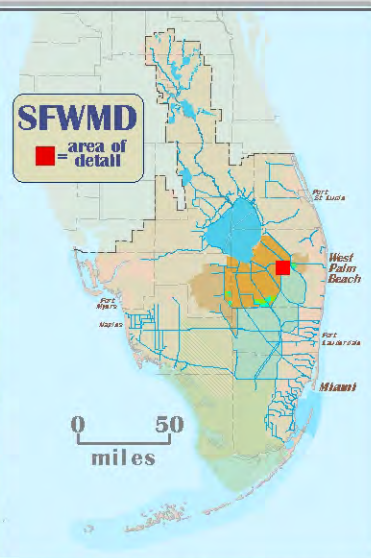
imagery = CIR, 4/16/09, 1ft

26.6583°

26.65°

26.6417°

<b>A</b>	<b>B</b>	<b>C</b>	<b>D</b>		
26.6547 -80.4277	26.6547 -80.4236	26.6546 -80.4195	26.6546 -80.4154		
<b>E</b>	<b>F</b>	<b>G</b>			
26.651 -80.4277	26.651 -80.4236	26.651 -80.4195			
<b>H</b>	<b>I</b>	<b>J</b>	<b>K</b>	<b>L</b>	<b>M</b>
26.6474 -80.444	26.6474 -80.44	26.6474 -80.4359	26.6474 -80.4318	26.6473 -80.4277	26.6473 -80.4236
<b>N</b>	<b>O</b>	<b>P</b>	<b>Q</b>	<b>R</b>	<b>S</b>
26.6437 -80.4441	26.6437 -80.44	26.6437 -80.4359	26.6437 -80.4318	26.6437 -80.4277	26.6436 -80.4237



IMPORTANT DISCLAIMER: This map is a conceptual or planning tool only. The South Florida Water Management District does not guarantee or make any representation regarding the information contained herein. It is not self-executing or binding, and does not affect the interests of any persons or properties, including any present or future right or use of real property.

80.4417°

80.4333°

80.425°

Vegetation and Land Management Department



Vegetation Management Division

STA 1W Cell 2B

Soil Sampling Points



Culvert



Pump



Spillway



Weir



STA/cell boundary

0 660 1,320 feet

imagery = CIR, 4/16/09, 1ft

26.6417°

T  
26.6401  
-80.4441

U  
26.6401  
-80.44

V  
26.64  
-80.4359

W  
26.64  
-80.4318

X  
26.64  
-80.4277

Y  
26.6364  
-80.4441

Z  
26.6364  
-80.44

AA  
26.6364  
-80.4359

AB  
26.6364  
-80.4318

26.6333°

SFWMD

area of detail



0 50 miles

IMPORTANT DISCLAIMER: This map is a conceptual or planning tool only. The South Florida Water Management District does not guarantee or make any representation regarding the information contained herein. It is not self-executing or binding, and does not affect the interests of any persons or properties, including any present or future right or use of real property.

\\wad.stw.md.gov\DFSRoot\Data\ez\_support\business\STA\STA\_GIS\GIS\_Facilities\SamplePoints

80.45°

80.4417°

80.4333°

80.425°

80.4167°

26.625°

26.6167°

26.6083°

26.6°

**A** 26.6254 -80.436  
**B** 26.6253 -80.4319  
**C** 26.6253 -80.4278

**D** 26.6217 -80.4401  
**E** 26.6217 -80.436  
**F** 26.6217 -80.4319  
**G** 26.6217 -80.4278

**H** 26.618 -80.4401  
**I** 26.618 -80.436  
**J** 26.618 -80.4319

**K** 26.6144 -80.4442  
**L** 26.6144 -80.4401  
**M** 26.6144 -80.436  
**N** 26.6143 -80.432

**O** 26.6107 -80.4442  
**P** 26.6107 -80.4401  
**Q** 26.6107 -80.4361

**R** 26.6071 -80.4442  
**S** 26.607 -80.4402

**T** 26.6034 -80.4442  
**W** 26.6034 -80.4402

**U** 26.5997 -80.4443

Vegetation and Land Management Department



Vegetation Management Division

STA 1W Cell 3

Soil Sampling Points



Culvert



Pump



Spillway



Weir



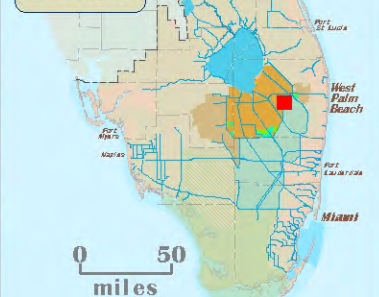
STA/cell boundary

0 660 1,320 1,980 feet

imagery = CIR, 4/16/09, 1ft

SFWMD

area of detail



IMPORTANT DISCLAIMER: This map is a conceptual or planning tool only. The South Florida Water Management District does not guarantee or make any representation regarding the information contained herein. It is not self-executing or binding, and does not affect the interests of any persons or properties, including any present or future right or use of real property.

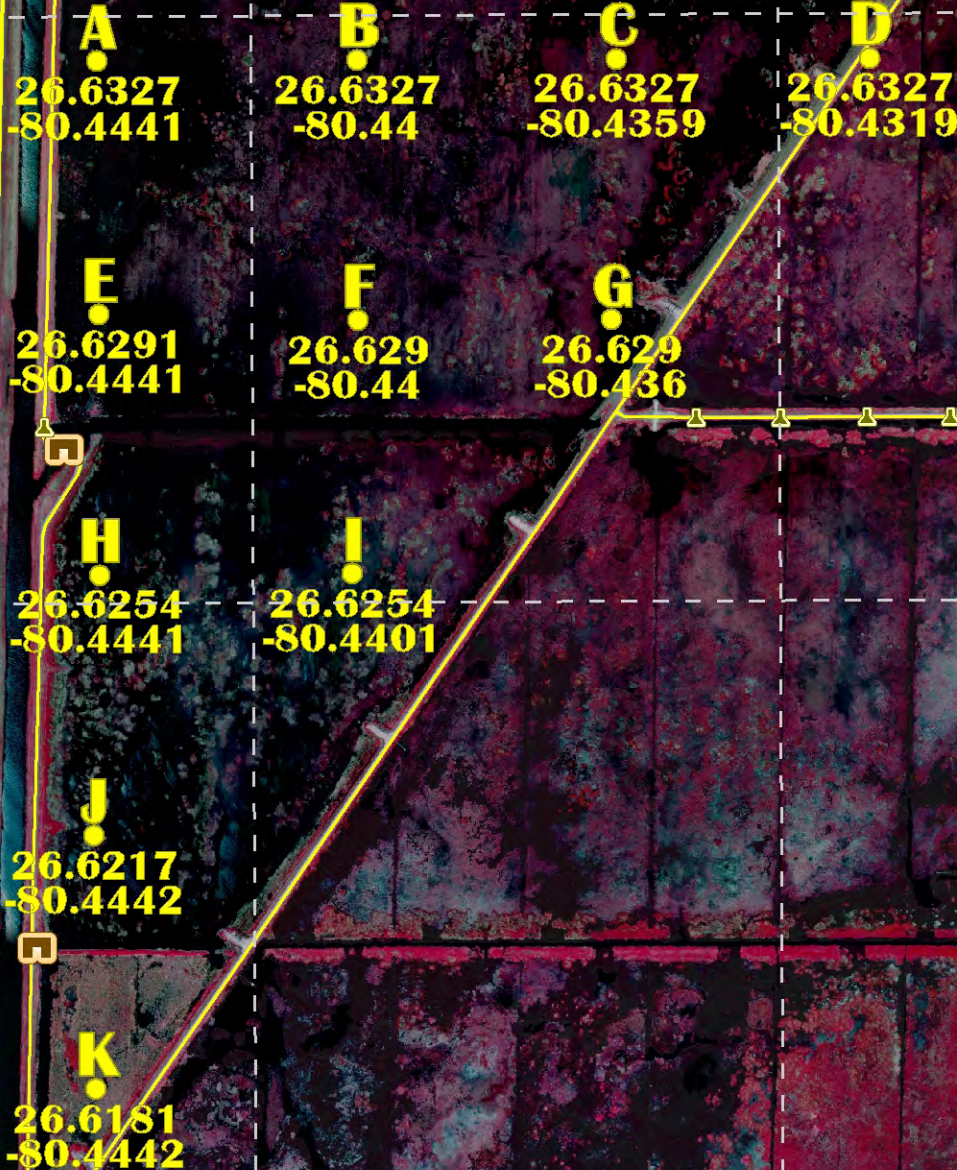
80.4417°

80.4333°

26.6333°

26.625°

26.6167°



# STA 1W Cell 4

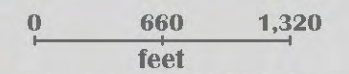
## Soil Sampling Points



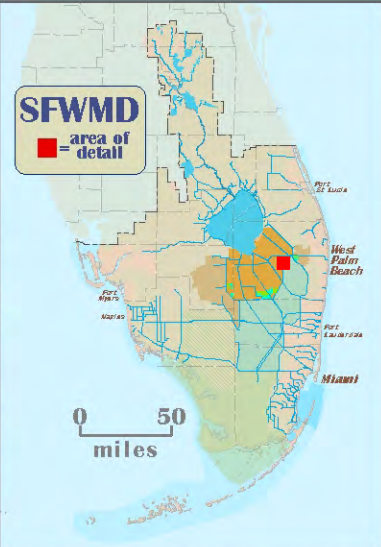
**Culvert** **Pump**

**Spillway** **Weir**

**STA/cell boundary**



imagery = CIR, 4/16/09, 1ft



**IMPORTANT DISCLAIMER** - This map is a conceptual or planning tool only. The South Florida Water Management District does not guarantee or make any representation regarding the information contained herein. It is not self-executing or binding, and does not affect the interests of any persons or properties, including any present or future right of use of real property.

80.4083°

80.4°

80.3917°

Vegetation and Land Management Department



Vegetation Management Division

STA 1W Cell 5A

Soil Sampling Points



Culvert



Pump



Spillway



Weir



STA/cell boundary

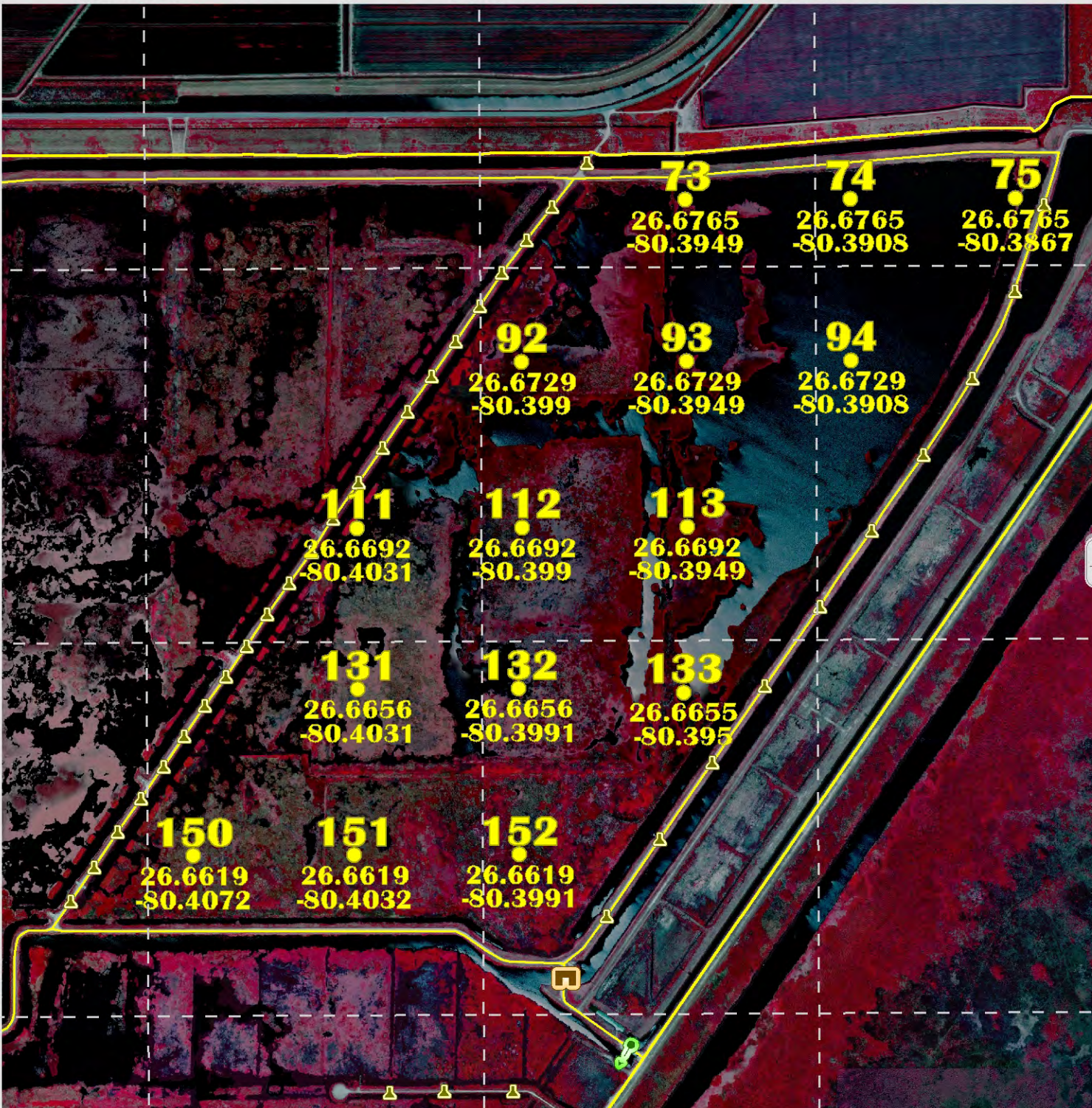
0 660 1,320 feet

imagery = CIR, 4/16/09, 1ft

26.675°

26.6667°

26.6583°



SFWMD

area of detail



IMPORTANT DISCLAIMER: This map is a conceptual or planning tool only. The South Florida Water Management District does not guarantee or make any representation regarding the information contained herein. It is not self-executing or binding, and does not affect the interests of any persons or properties, including any present or future right or use of real property.

wad.stwmwd.gov\DFSRoot\Data\ez\_support\business\STA\STA\_GIS\VI\_Facilities\SamplePoints

80.4417° 80.4333° 80.425° 80.4167° 80.4083° 80.4°

26.6833°

26.675°

26.6667°

26.6583°

26.65°

26.6417°

Vegetation and Land Management Department



Vegetation Management Division

STA 1W Cell 5B

Soil Sampling Points



Culvert



Pump



Spillway



Weir



STA/cell boundary

0 1,320 2,640 feet

imagery = CIR, 4/16/09, 1ft

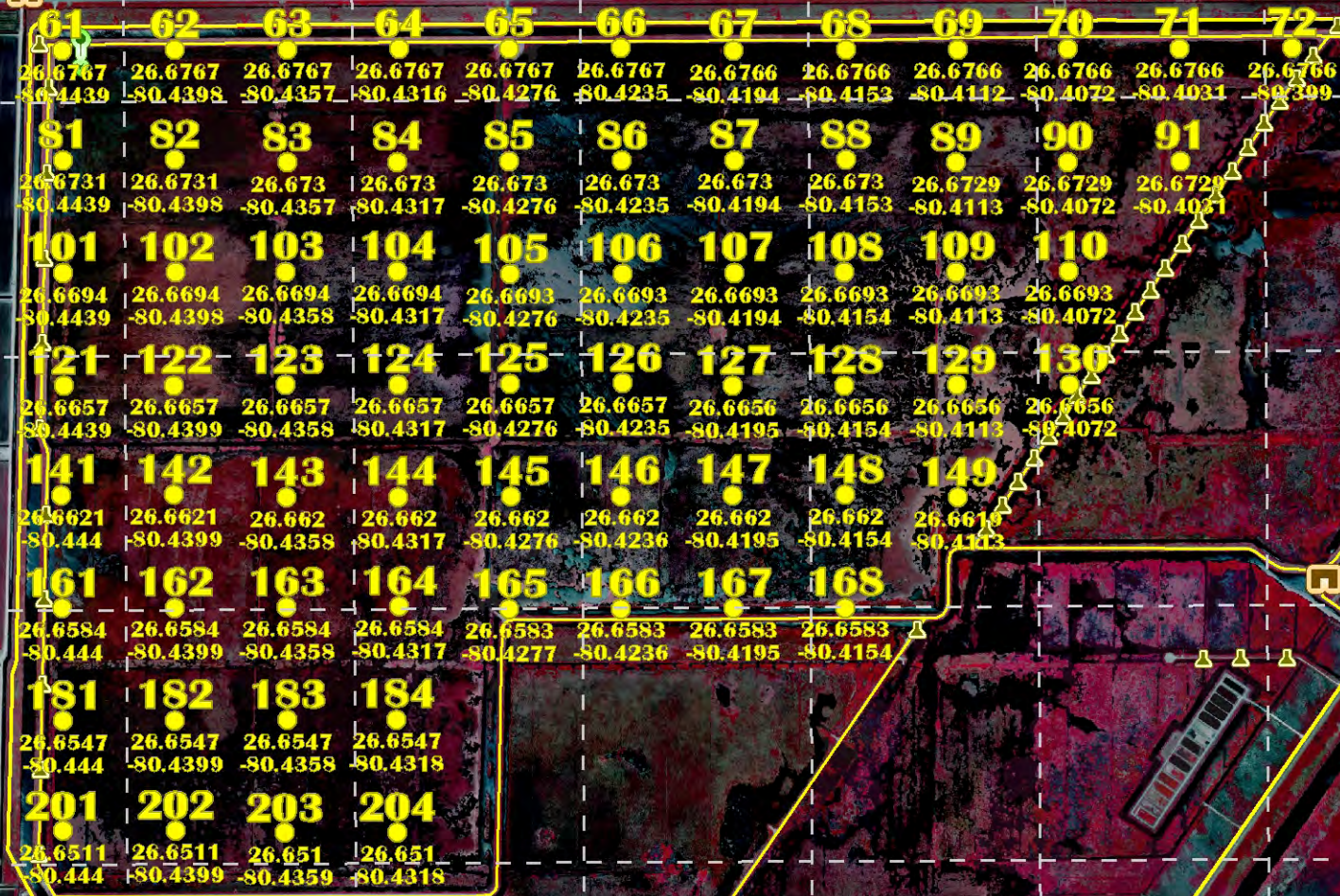


SFWMD

area of detail



0 50 miles



IMPORTANT DISCLAIMER: This map is a conceptual or planning tool only. The South Florida Water Management District does not guarantee or make any representation regarding the information contained herein. It is not self-executing or binding, and does not affect the interests of any persons or properties, including any present or future right of use of real property.

\\ad.sfwmd.gov\DFSRoot\Data\ez\_support\business\STA\STA\_GIS\VI\_Facilities\SamplePoints



80.525° 80.5167° 80.5083° 80.5° 80.4917° 80.4833°



# STA 2 Cell 1

## Soil Sampling Points



**Culvert**

**Pump**

**Spillway**

**Weir**

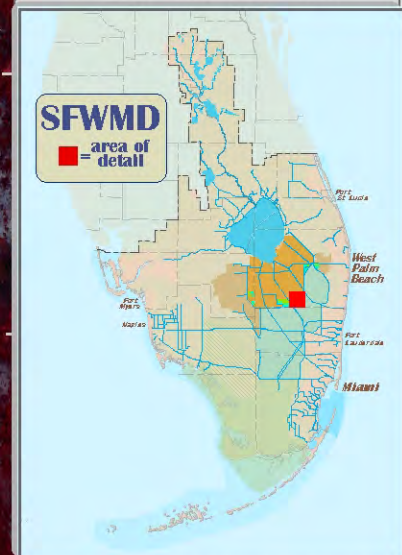
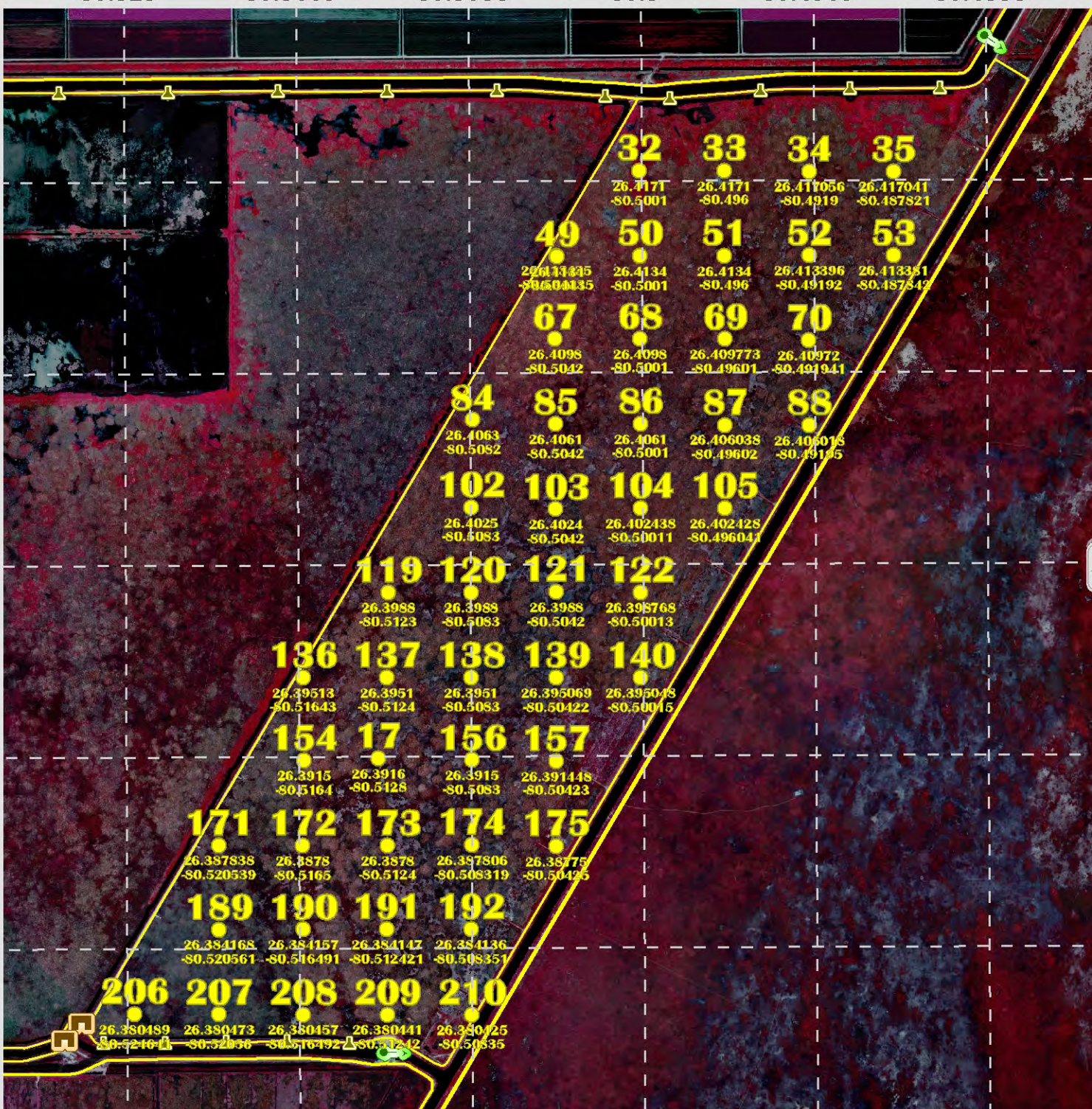


**STA/cell boundary**

0 1,320 2,640  
feet

imagery = CIR, 4/16/09, 1ft

26.4167°  
26.4083°  
26.4°  
26.3917°  
26.3833°



**IMPORTANT DISCLAIMER** - This map is a conceptual or planning tool only. The South Florida Water Management District does not guarantee or make any representation regarding the information contained herein. It is not self-executing or binding, and does not affect the interests of any persons or properties, including any present or future right of use of real property.

80.5417° 80.5333° 80.525° 80.5167° 80.5083° 80.5°



# STA 2 Cell 2

## Soil Sampling Points



**Culvert**



**Pump**



**Spillway**



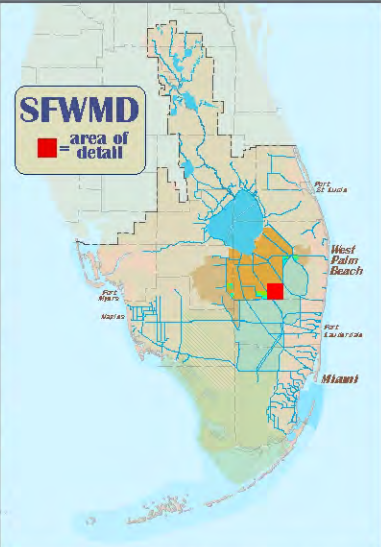
**Weir**



**STA/cell boundary**

0 1,320 2,640  
feet

imagery = CIR, 4/16/09, 1ft



26.4167°  
26.4083°  
26.4°  
26.3917°  
26.3833°

<b>24</b> 26.4172 -80.5326	<b>25</b> 26.4172 -80.5286	<b>26</b> 26.4172 -80.5245	<b>27</b> 26.4172 -80.5204	<b>28</b> 26.4172 -80.5163	<b>29</b> 26.4171 -80.5123	<b>30</b> 26.4171 -80.5082	<b>31</b> 26.4171 -80.5041
<b>42</b> 26.4135 -80.5327	<b>43</b> 26.4135 -80.5286	<b>44</b> 26.4135 -80.5245	<b>45</b> 26.4135 -80.5204	<b>46</b> 26.4135 -80.5164	<b>47</b> 26.4135 -80.5123	<b>48</b> 26.4135 -80.5082	
<b>60</b> 26.4099 -80.5327	<b>61</b> 26.4099 -80.5286	<b>62</b> 26.4098 -80.5245	<b>63</b> 26.4098 -80.5204	<b>64</b> 26.4099 -80.5163	<b>65</b> 26.4099 -80.5123	<b>66</b> 26.4098 -80.5082	
<b>78</b> 26.40618 -80.532678	<b>79</b> 26.406159 -80.528607	<b>80</b> 26.406139 -80.52452	<b>81</b> 26.4062 -80.5205	<b>82</b> 26.4061 -80.5164	<b>83</b> 26.4061 -80.5123		
<b>96</b> 26.40254 -80.53269	<b>97</b> 26.402529 -80.52862	<b>98</b> 26.4026 -80.5245	<b>99</b> 26.4026 -80.5205	<b>100</b> 26.4026 -80.5164	<b>101</b> 26.40247 -80.51233		
<b>114</b> 26.39887 -80.53271	<b>115</b> 26.398859 -80.528641	<b>116</b> 26.3988 -80.5246	<b>117</b> 26.3988 -80.5205	<b>118</b> 26.39881 -80.51641			
<b>132</b> 26.3952 -80.53272	<b>133</b> 26.395189 -80.52865	<b>134</b> 26.3952 -80.5245	<b>135</b> 26.3952 -80.5205				
<b>150</b> 26.39151 -80.532741	<b>151</b> 26.3915 -80.5287	<b>152</b> 26.3916 -80.5245	<b>153</b> 26.39149 -80.52051				
<b>168</b> 26.38787 -80.53275	<b>169</b> 26.387859 -80.528679	<b>170</b> 26.387849 -80.52461					
<b>186</b> 26.3842 -80.53277	<b>187</b> 26.384189 -80.528699	<b>188</b> 26.384179 -80.52463					
<b>204</b> 26.38052 -80.53278	<b>205</b> 26.380504 -80.52871						

**IMPORTANT DISCLAIMER** - This map is a conceptual or planning tool only. The South Florida Water Management District does not guarantee or make any representation regarding the information contained herein. It is not self-executing or binding, and does not affect the interests of any persons or properties, including any present or future right of use of real property.

80.5667° 80.5583° 80.55° 80.5417° 80.5333° 80.525° 80.51

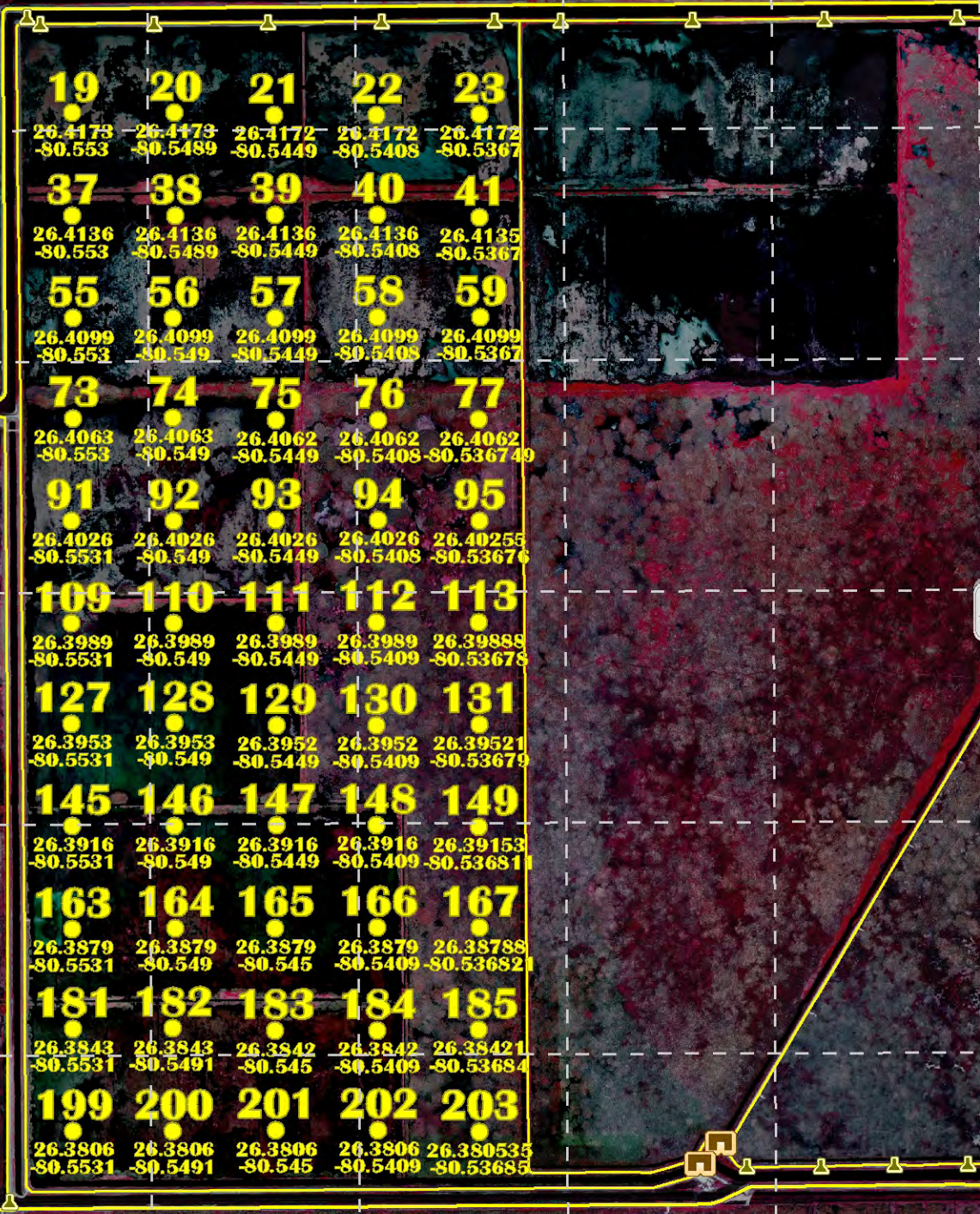
26.4167°

26.4083°

26.4°

26.3917°

26.3833°



# STA 2 Cell 3

## Soil Sampling Points



**Culvert**



**Pump**



**Spillway**



**Weir**



**STA/cell boundary**



0 1,320 2,640  
feet

imagery = CIR, 4/16/09, 1ft



80.5917°

80.5833°

80.575°

80.5667°

80.5583°

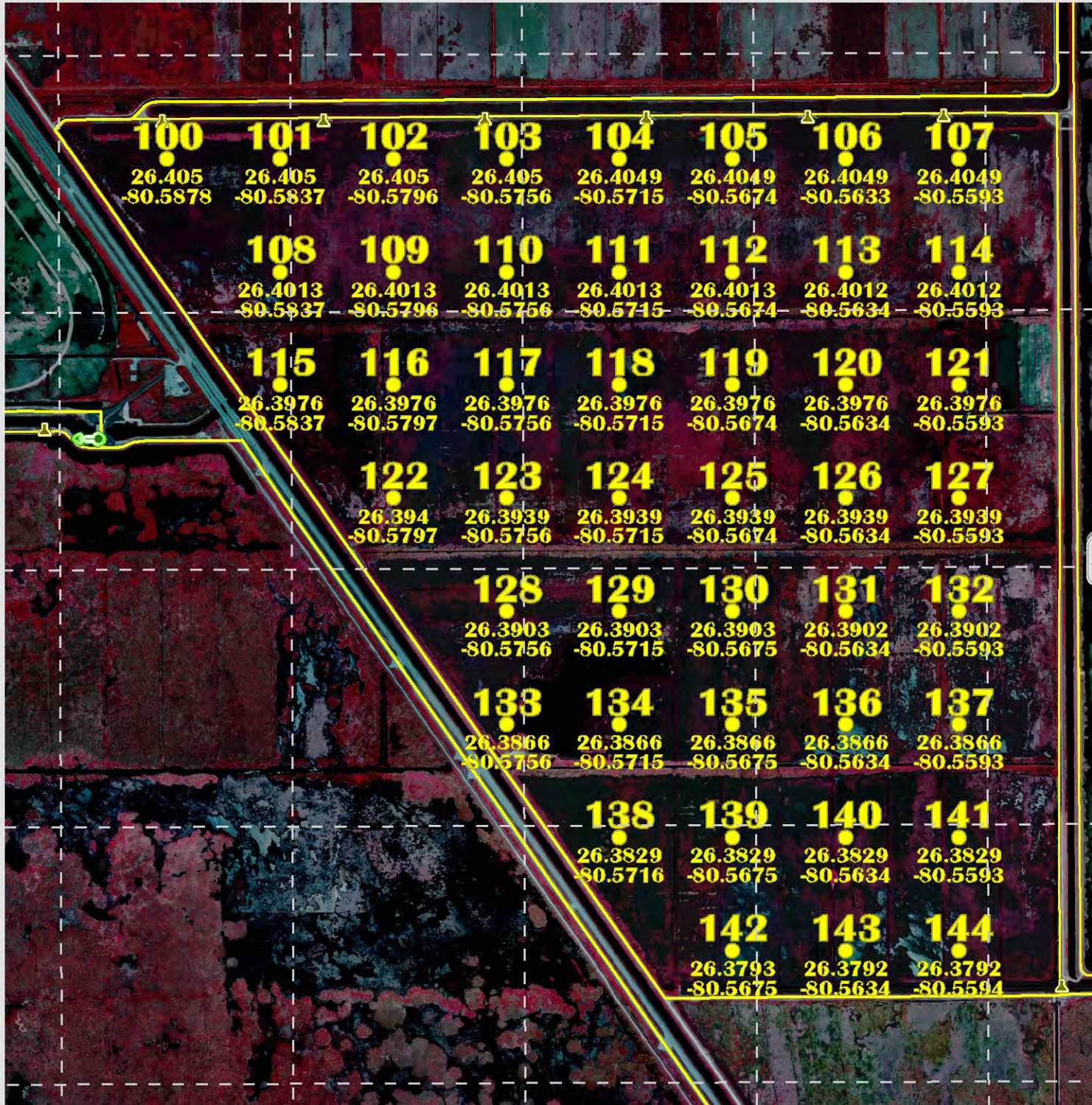
26.4083°

26.4°

26.3917°

26.3833°

26.375°



# STA 2 Cell 4

## Soil Sampling Points



**Culvert**



**Pump**



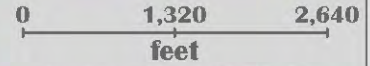
**Spillway**



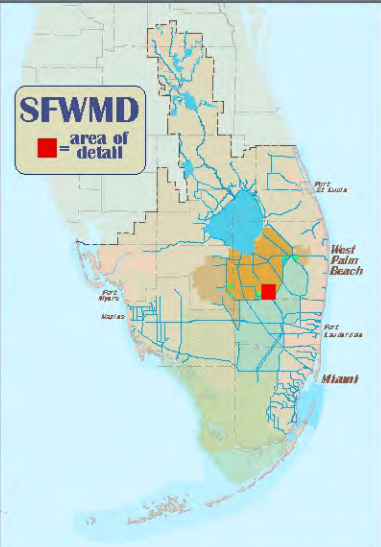
**Weir**



**STA/cell boundary**



imagery = CIR, 4/16/09, 1ft



80.6167° 80.6083° 80.6° 80.5917° 80.5833° 80.575° 80.5667° 80.5583°

Vegetation and Land Management Department



Vegetation Management Division

**STA 3/4  
Cell 1A**

**Soil Sampling Points**



**Culvert**



**Pump**



**Spillway**



**Weir**

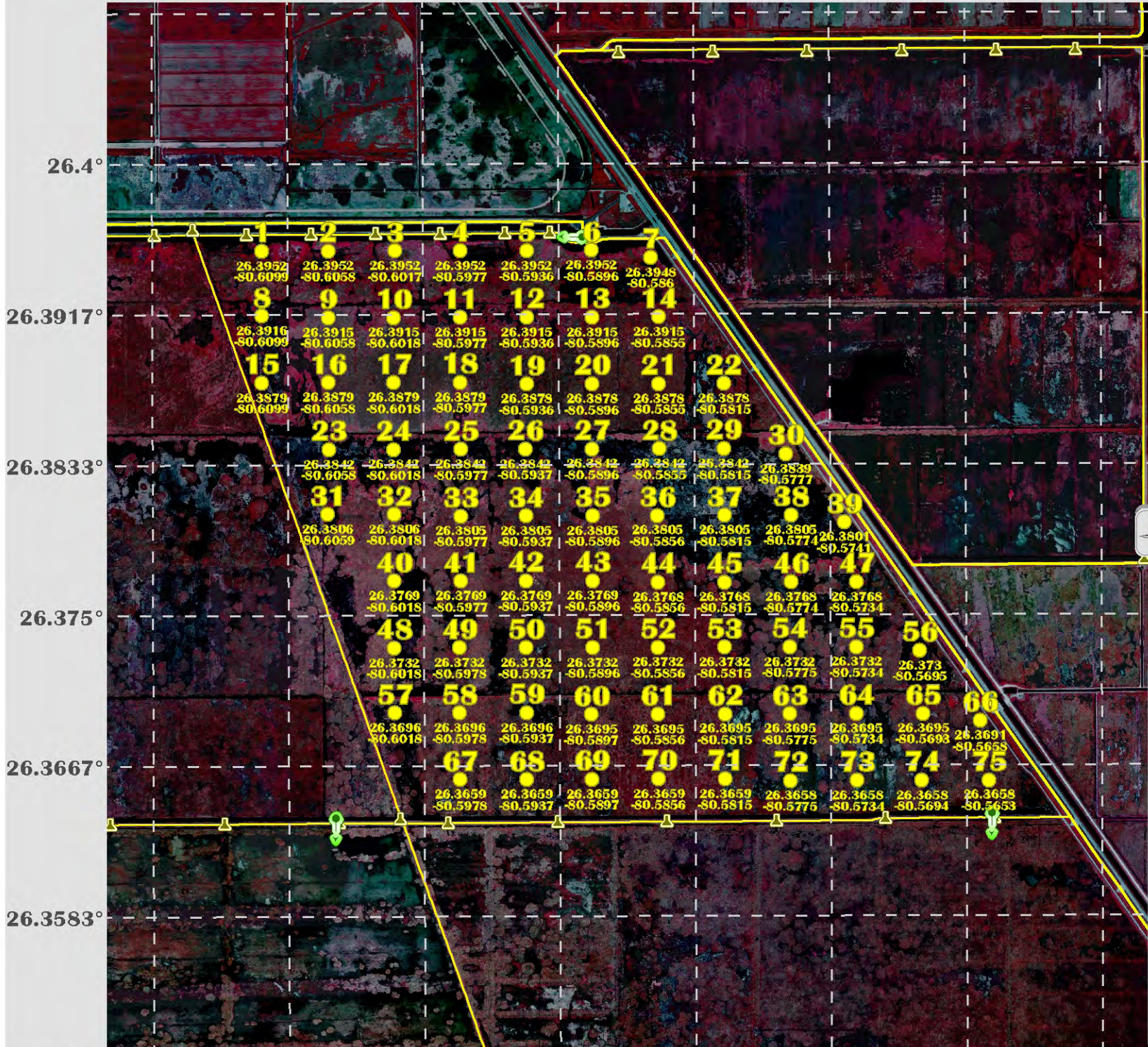
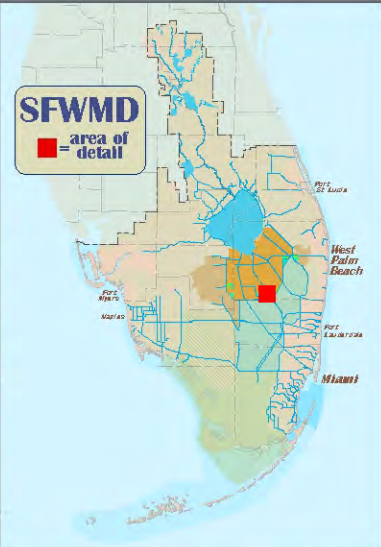


**STA/cell boundary**



0 1,320 2,640 3,960  
feet

imagery = CIR, 4/16/09, 1ft



**IMPORTANT DISCLAIMER** - This map is a conceptual or planning tool only. The South Florida Water Management District does not guarantee or make any representation regarding the information contained herein. It is not self-executing or binding, and does not affect the interests of any persons or properties, including any present or future right or use of real property.

\\wad.stw.md.gov\DFSRoot\Data\ez\_support\business\STA\STA\_GIS\Facilities\SamplePoints

80.6°

80.5875°

80.575°

80.5625°

80.55°

80.5375°

26.3875°

26.375°

26.3625°

26.35°

26.3375°

Point	Latitude	Longitude
1	26.3622500000	-80.5978000000
2	26.3622400000	-80.5937300000
3	26.3622200000	-80.5896800000
4	26.3622100000	-80.5856200000
5	26.3622000000	-80.5815500000
6	26.3621900000	-80.5774900000
7	26.3621800000	-80.5734300000
8	26.3621600000	-80.5693700000
9	26.3621500000	-80.5653100000
10	26.3621400000	-80.5612400000
11	26.3585900000	-80.5978100000
12	26.3585800000	-80.5937500000
13	26.3585600000	-80.5896900000
14	26.3585500000	-80.5856200000
15	26.3585400000	-80.5815700000
16	26.3585300000	-80.5775100000
17	26.3585200000	-80.5734400000
18	26.3585100000	-80.5693800000
19	26.3584900000	-80.5653200000
20	26.3584800000	-80.5612600000
21	26.3584700000	-80.5572000000
22	26.3549200000	-80.5937700000
23	26.3549100000	-80.5897000000
24	26.3548900000	-80.5856400000
25	26.3548800000	-80.5815800000

Point	Latitude	Longitude
26	26.3548700000	-80.5775100000
27	26.3548600000	-80.5734600000
28	26.3548500000	-80.5694000000
29	26.3548300000	-80.5653300000
30	26.3548200000	-80.5612700000
31	26.3548100000	-80.5572100000
32	26.3512600000	-80.5937700000
33	26.3512500000	-80.5897100000
34	26.3512300000	-80.5856600000
35	26.3512200000	-80.5815900000
36	26.3512100000	-80.5775300000
37	26.3512000000	-80.5734700000
38	26.3511900000	-80.5694000000
39	26.3511800000	-80.5653500000
40	26.3511600000	-80.5612900000
41	26.3511500000	-80.5572200000
42	26.3511400000	-80.5531600000
43	26.3476000000	-80.5937900000
44	26.3475900000	-80.5897300000
45	26.3475800000	-80.5856700000
46	26.3475600000	-80.5816000000
47	26.3475500000	-80.5775500000
48	26.3475400000	-80.5734900000
49	26.3475300000	-80.5694200000
50	26.3475200000	-80.5653600000

Point	Latitude	Longitude
51	26.3475000000	-80.5613000000
52	26.3474900000	-80.5572400000
53	26.3474800000	-80.5531800000
54	26.3474700000	-80.5491200000
55	26.3439300000	-80.5897400000
56	26.3439200000	-80.5856800000
57	26.3439000000	-80.5816200000
58	26.3438900000	-80.5775600000
59	26.3438800000	-80.5734900000
60	26.3438700000	-80.5694400000
61	26.3438600000	-80.5653800000
62	26.3438400000	-80.5613100000
63	26.3438300000	-80.5572500000
64	26.3438200000	-80.5531900000
65	26.3438100000	-80.5491300000
66	26.3437900000	-80.5450700000
67	26.3402700000	-80.5897500000
68	26.3402600000	-80.5856900000
69	26.3402500000	-80.5816300000
70	26.3402300000	-80.5775700000
71	26.3402200000	-80.5735100000
72	26.3402100000	-80.5694500000
73	26.3402000000	-80.5653900000
74	26.3401900000	-80.5613300000
75	26.3401700000	-80.5572700000
76	26.3401600000	-80.5532100000
77	26.3401500000	-80.5491400000
78	26.3401300000	-80.5450800000
79	26.3366100000	-80.5897700000
80	26.3366000000	-80.5857100000
81	26.3365900000	-80.5816400000
82	26.3365700000	-80.5775800000
83	26.3365600000	-80.5735200000
84	26.3365500000	-80.5694600000
85	26.3365400000	-80.5654000000
86	26.3365300000	-80.5613400000
87	26.3365100000	-80.5572800000
88	26.3365000000	-80.5532200000
89	26.3364900000	-80.5491600000
90	26.3364800000	-80.5451000000




Vegetation and Land Management Department



Vegetation Management Division



# STA 3/4 Cell 1B

## Soil Sampling Points





Culvert


Pump

Spillway

Weir

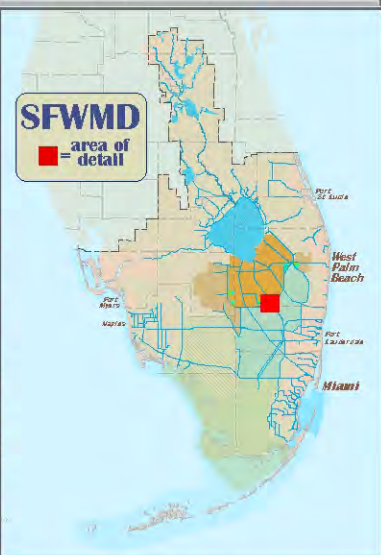


STA/cell boundary

0 1,320 2,640 3,960

feet

imagery = CIR, 4/16/09, 1ft



**IMPORTANT DISCLAIMER:** This map is a conceptual or planning tool only. The South Florida Water Management District does not guarantee or make any representation regarding the information contained herein. It is not self-executing or binding, and does not affect the interests of any persons or properties, including any present or future right or use of real property.

80.6333°

80.625°

80.6167°

80.6083°

80.6°

Vegetation and Land Management Department



Vegetation Management Division

STA 3/4 Cell 2A

Soil Sampling Points



Culvert



Pump



Spillway



Weir

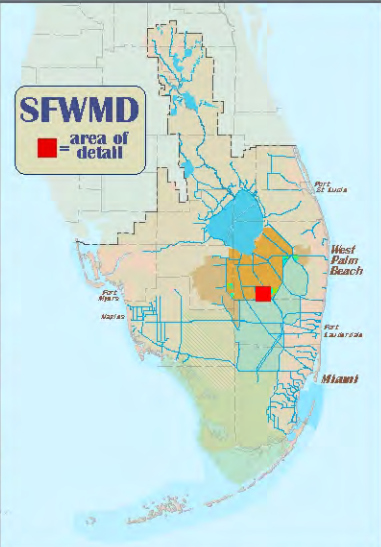


STA/cell boundary



0 1,320 2,640 feet

imagery = CIR, 4/16/09, 1ft



IMPORTANT DISCLAIMER • This map is a conceptual or planning tool only. The South Florida Water Management District does not guarantee or make any representation regarding the information contained herein. It is not self-executing or binding, and does not affect the interests of any persons or properties, including any present or future right or use of real property.

wad.stw.md.gov\DFSRoot\Data\ez\_support\business\STA\STA\_GIS\GIS\_Facilities\SamplePoints

80.625°

80.6167°

80.6083°

80.6°

80.5917°

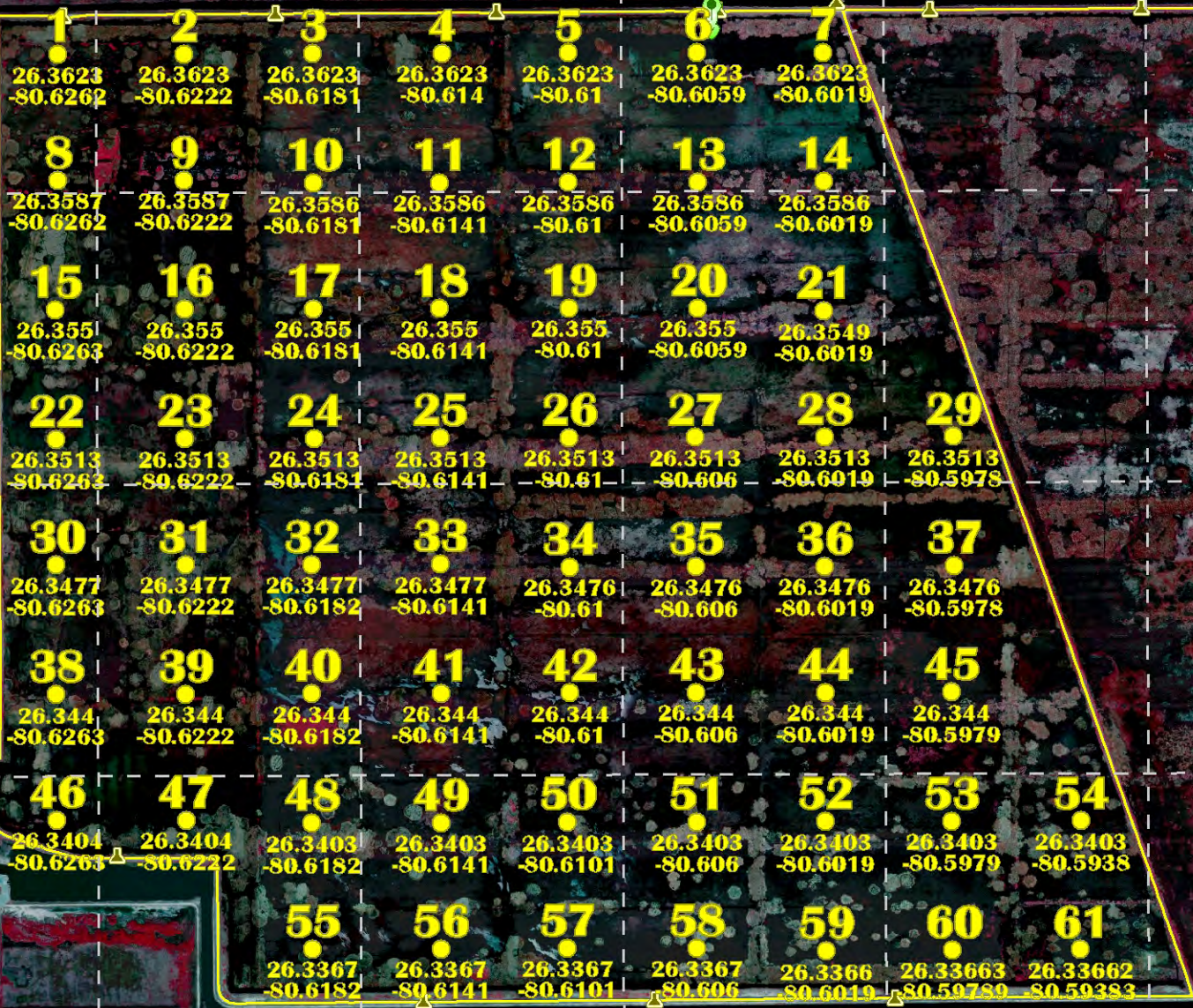
26.3667°

26.3583°

26.35°

26.3417°

26.3333°



Vegetation and Land Management Department



Vegetation Management Division

STA 3/4 Cell 2B

Soil Sampling Points



Culvert



Pump



Spillway



Weir

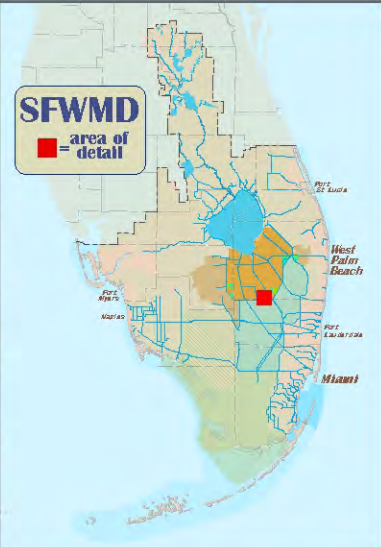


STA/cell boundary



0 1,320 2,640 feet

imagery = CIR, 4/16/09, 1ft



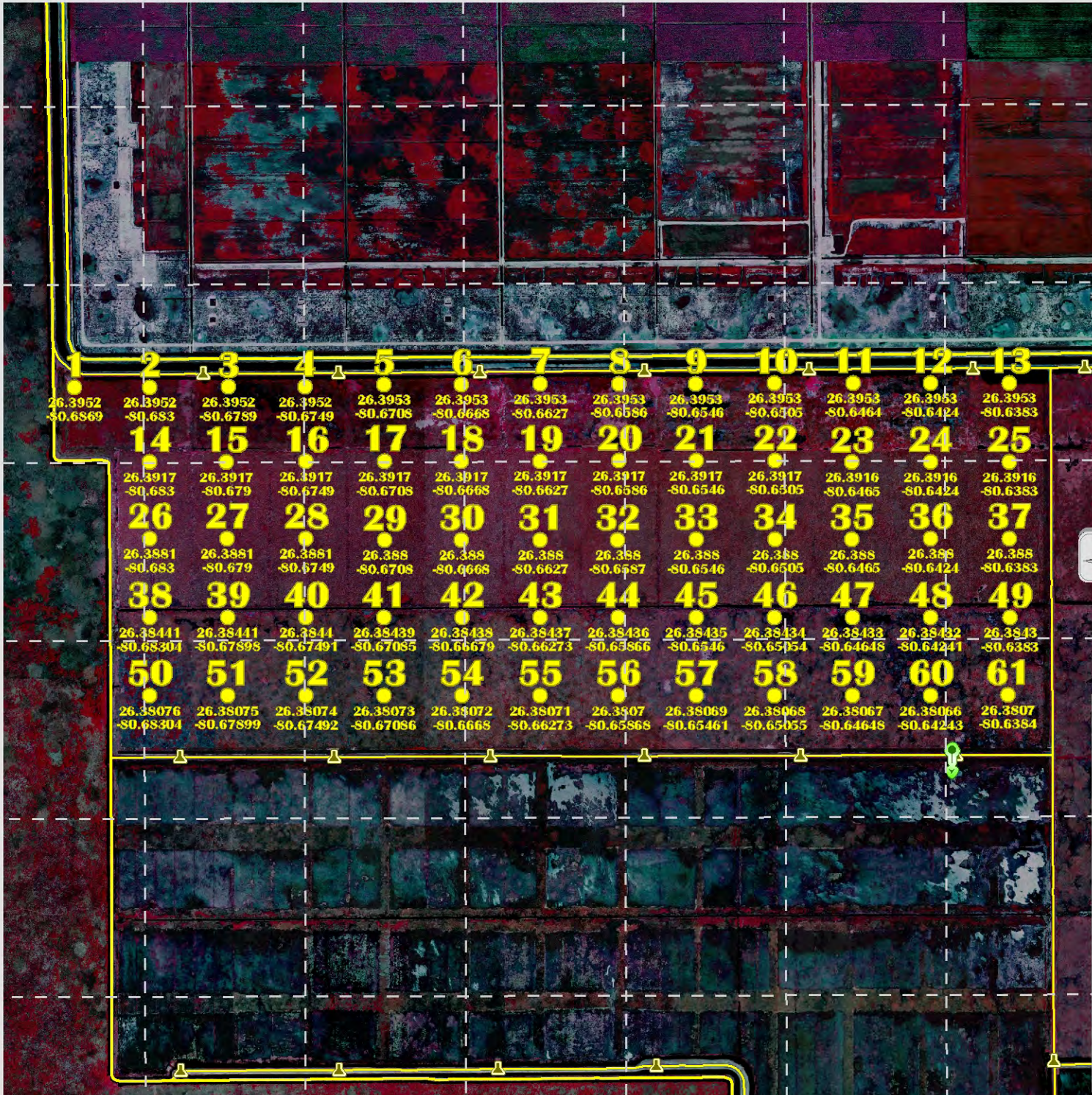
IMPORTANT DISCLAIMER: This map is a conceptual or planning tool only. The South Florida Water Management District does not guarantee or make any representation regarding the information contained herein. It is not self-executing or binding, and does not affect the interests of any persons or properties, including any present or future right or use of real property.

\\wad.stw.md.gov\DFSRoot\Data\ez\_support\business\STA\STA\_GIS\GIS\_Facilities\SamplePoints



80.6833° 80.675° 80.6667° 80.6583° 80.65° 80.6417°

26.4083°  
26.4°  
26.3917°  
26.3833°  
26.375°  
26.3667°




Vegetation and Land Management Department

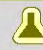



Vegetation Management Division


# STA 3/4 Cell 3A


## Soil Sampling Points




**Culvert** 

**Pump** 

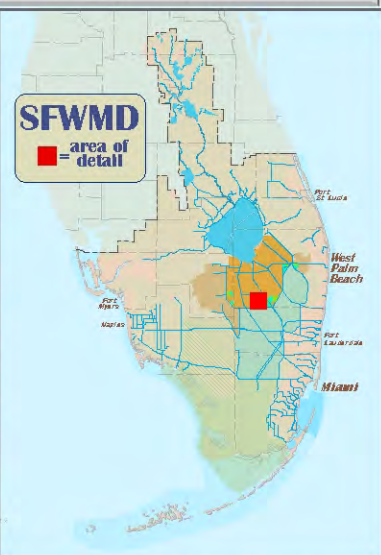
**Spillway** 

**Weir** 

**STA/cell boundary** 

0 1,320 2,640 feet

imagery = CIR, 4/16/09, 1ft



**IMPORTANT DISCLAIMER** - This map is a conceptual or planning tool only. The South Florida Water Management District does not guarantee or make any representation regarding the information contained herein. It is not self-executing or binding, and does not affect the interests of any persons or properties, including any present or future right or use of real property.

80.6833° 80.675° 80.6667° 80.6583° 80.65° 80.6417°

26.3917°  
26.3833°  
26.375°  
26.3667°  
26.3583°  
26.35°



Vegetation and Land Management Department





Vegetation Management Division


# STA 3/4 Cell 3B


## Soil Sampling Points





**Culvert** 

**Pump** 

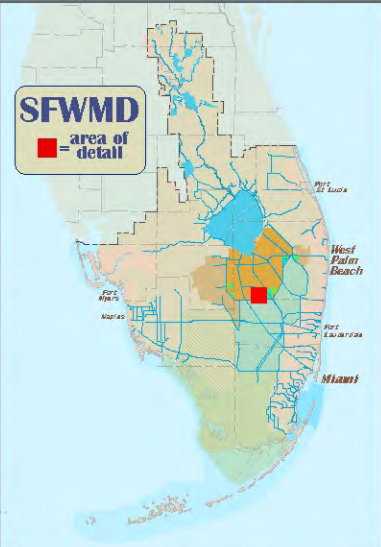
**Spillway** 

**Weir** 

 **STA/cell boundary** 

0 1,320 2,640  
feet

imagery = CIR, 4/16/09, 1ft



**IMPORTANT DISCLAIMER** - This map is a conceptual or planning tool only. The South Florida Water Management District does not guarantee or make any representation regarding the information contained herein. It is not self-executing or binding, and does not affect the interests of any persons or properties, including any present or future right of use of real property.

80.95°

80.9417°

80.9333°

80.925°

80.9167°

26.4667°

26.4583°

26.45°

26.4417°

Vegetation and Land Management Department



Vegetation Management Division

STA 5 Cell 1A

Soil Sampling Points



Culvert



Pump



Spillway



Weir



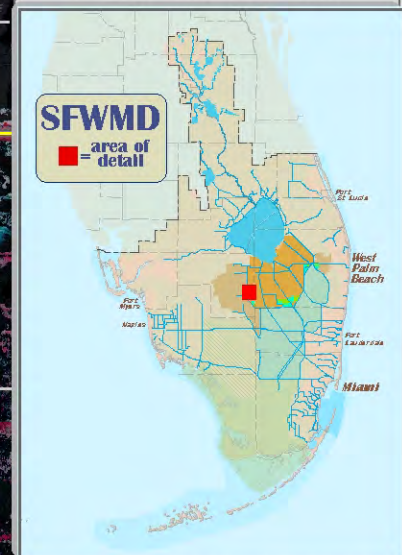
STA/cell boundary

0 1,320 2,640

feet

imagery = CIR, 4/16/09, 1ft

1	2	3	4	5	6
26.4602 -80.9373	26.4602 -80.9332	26.4602 -80.9292	26.4602 -80.9251	26.4602 -80.9211	26.4602 -80.917
7	8	9	10	11	12
26.4566 -80.9373	26.4566 -80.9332	26.4566 -80.9292	26.4566 -80.9251	26.4566 -80.9211	26.4566 -80.917
13	14	15	16	17	18
26.4529 -80.9373	26.4529 -80.9333	26.4529 -80.9292	26.4529 -80.9251	26.4529 -80.9211	26.4529 -80.917
19	20	21	22	23	24
26.4493 -80.9373	26.4493 -80.9333	26.4493 -80.9292	26.4493 -80.9251	26.4493 -80.9211	26.4492 -80.917



IMPORTANT DISCLAIMER: This map is a conceptual or planning tool only. The South Florida Water Management District does not guarantee or make any representation regarding the information contained herein. It is not self-executing or binding, and does not affect the interests of any persons or properties, including any present or future right or use of real property.

vad.stw.md.gov\DFSRoot\Data\ez\_support\business\STA\STA\_GIS\GIS\_Facilities\SamplePoints

80.9167°

80.9083°

80.9°

80.8917°

80.8833°

26.4667°

26.4583°

26.45°

26.4417°

Vegetation and Land Management Department



Vegetation Management Division

STA 5 Cell 1B

Soil Sampling Points



Culvert

Pump



Spillway

Weir



STA/cell boundary

0 1,320 2,640 feet

imagery = CIR, 4/16/09, 1ft

1 26.4602 -80.9129	2 26.4602 -80.9089	3 26.4602 -80.9048	4 26.4602 -80.9007	5 26.4602 -80.8967	6 26.4602 -80.8926	7 26.4602 -80.8885	8 26.4602 -80.8845
9 26.4566 -80.9129	10 26.4566 -80.9089	11 26.4566 -80.9048	12 26.4566 -80.9007	13 26.4566 -80.8967	14 26.4566 -80.8926	15 26.4565 -80.8885	16 26.4565 -80.8845
17 26.4529 -80.9129	18 26.4529 -80.9089	19 26.4529 -80.9048	20 26.4529 -80.9007	21 26.4529 -80.8967	22 26.4529 -80.8926	23 26.4529 -80.8885	24 26.4529 -80.8845
25 26.4492 -80.9129	26 26.4492 -80.9089	27 26.4492 -80.9048	28 26.4492 -80.9007	29 26.4492 -80.8967	30 26.4492 -80.8926	31 26.4492 -80.8885	32 26.4492 -80.8845

SFWMD

area of detail



IMPORTANT DISCLAIMER: This map is a conceptual or planning tool only. The South Florida Water Management District does not guarantee or make any representation regarding the information contained herein. It is not self-executing or binding, and does not affect the interests of any persons or properties, including any present or future right or use of real property.

wad.stw.md.gov\DFSRoot\Data\ez\_support\business\STA\STA\_GIS\GIS\_Facilities\SamplePoints

80.9417°

80.9333°

80.925°

80.9167°

Vegetation and Land Management Department



Vegetation Management Division

STA 5 Cell 2A

Soil Sampling Points



Culvert

Pump



Spillway

Weir



STA/cell boundary



0 1,320 2,640 feet

imagery = CIR, 4/16/09, 1ft

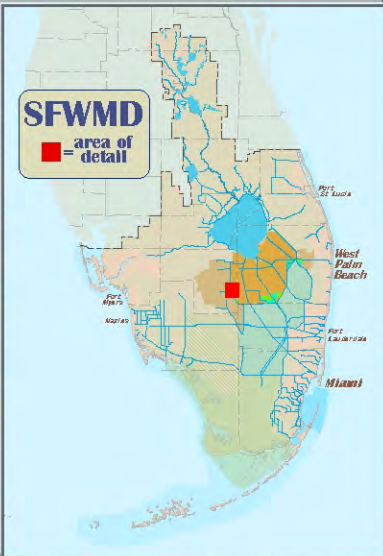
26.45°

26.4417°

26.4333°

26.425°

<b>1</b>	<b>2</b>	<b>3</b>	<b>4</b>	<b>5</b>	<b>6</b>
26.4456 -80.9373	26.4456 -80.9333	26.4456 -80.9292	26.4456 -80.9251	26.4456 -80.9211	26.4456 -80.917
<b>7</b>	<b>8</b>	<b>9</b>	<b>10</b>	<b>11</b>	<b>12</b>
26.4419 -80.9373	26.4419 -80.9333	26.4419 -80.9292	26.4419 -80.9251	26.4419 -80.9211	26.4419 -80.917
<b>13</b>	<b>14</b>	<b>15</b>	<b>16</b>	<b>17</b>	<b>18</b>
26.4383 -80.9373	26.4383 -80.9333	26.4383 -80.9292	26.4383 -80.9251	26.4383 -80.9211	26.4383 -80.917
<b>19</b>	<b>20</b>	<b>21</b>	<b>22</b>	<b>23</b>	<b>24</b>
26.4346 -80.9373	26.4346 -80.9333	26.4346 -80.9292	26.4346 -80.9251	26.4346 -80.9211	26.4346 -80.917



IMPORTANT DISCLAIMER: This map is a conceptual or planning tool only. The South Florida Water Management District does not guarantee or make any representation regarding the information contained herein. It is not self-executing or binding, and does not affect the interests of any persons or properties, including any present or future right of use of real property.

vad.stw.md.gov\DFSRoot\Data\ez\_support\business\STA\STA\_GIS\GIS\_Facilities\SamplePoints

80.9167°

80.9083°

80.9°

80.8917°

80.8833°

Vegetation and Land Management Department



Vegetation Management Division

STA 5 Cell 2B

Soil Sampling Points



Culvert

Pump



Spillway

Weir



STA/cell boundary

0 1,320 2,640 feet

imagery = CIR, 4/16/09, 1ft

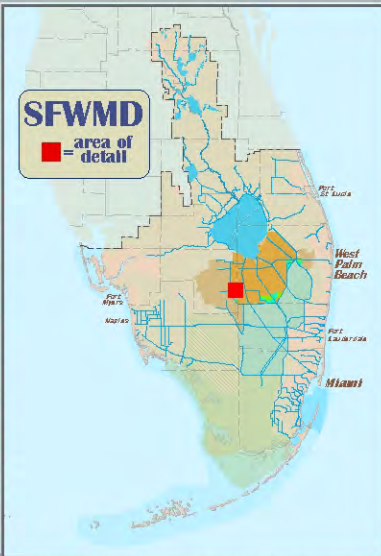
26.45°

26.4417°

26.4333°

26.425°

<b>1</b> 26.4456 -80.9129	<b>2</b> 26.4456 -80.9089	<b>3</b> 26.4456 -80.9048	<b>4</b> 26.4456 -80.9007	<b>5</b> 26.4456 -80.8967	<b>6</b> 26.4456 -80.8926	<b>7</b> 26.4456 -80.8885	<b>8</b> 26.4456 -80.8845
<b>9</b> 26.4419 -80.9129	<b>10</b> 26.4419 -80.9089	<b>11</b> 26.4419 -80.9048	<b>12</b> 26.4419 -80.9007	<b>13</b> 26.4419 -80.8967	<b>14</b> 26.4419 -80.8926	<b>15</b> 26.4419 -80.8885	<b>16</b> 26.4419 -80.8845
<b>17</b> 26.4383 -80.9129	<b>18</b> 26.4383 -80.9089	<b>19</b> 26.4383 -80.9048	<b>20</b> 26.4383 -80.9007	<b>21</b> 26.4383 -80.8967	<b>22</b> 26.4383 -80.8926	<b>23</b> 26.4383 -80.8885	<b>24</b> 26.4382 -80.8845
<b>25</b> 26.4346 -80.9129	<b>26</b> 26.4346 -80.9089	<b>27</b> 26.4346 -80.9048	<b>28</b> 26.4346 -80.9007	<b>29</b> 26.4346 -80.8967	<b>30</b> 26.4346 -80.8926	<b>31</b> 26.4346 -80.8885	<b>32</b> 26.4346 -80.8845



IMPORTANT DISCLAIMER: This map is a conceptual or planning tool only. The South Florida Water Management District does not guarantee or make any representation regarding the information contained herein. It is not self-executing or binding, and does not affect the interests of any persons or properties, including any present or future right or use of real property.

\\wad.stw.md.gov\DFSRoot\Data\ez\_support\business\STA\STA\_GIS\GIS\_Facilities\SamplePoints

80.9333°

80.925°

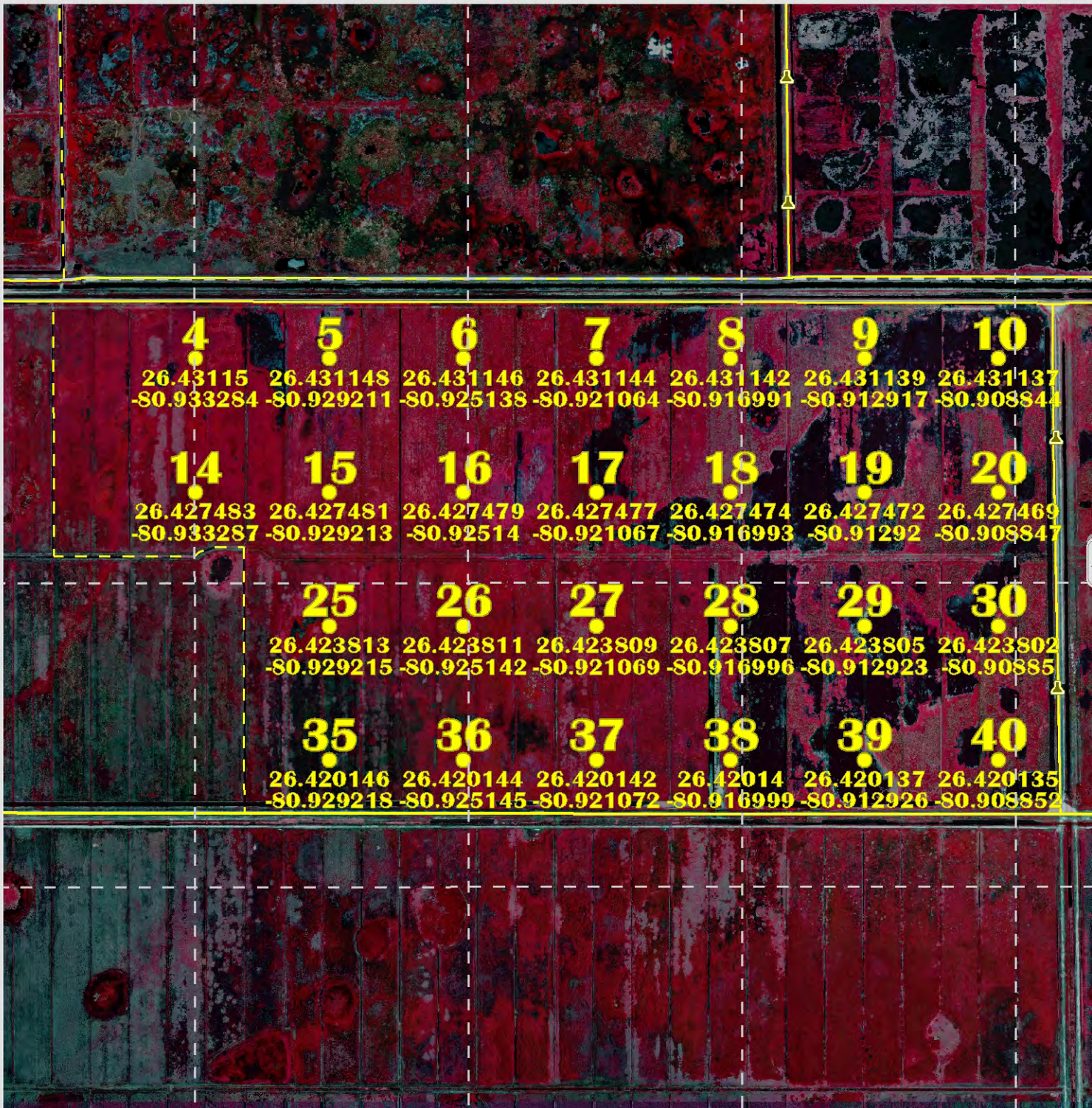
80.9167°

80.9083°

26.4333°

26.425°

26.4167°



Vegetation and Land Management Department



Vegetation Management Division

STA 5 Cell 3A

Soil Sampling Points



Culvert



Pump



Spillway



Weir

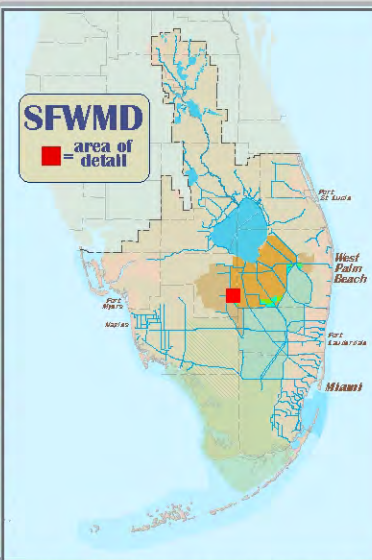


STA/cell boundary

0 660 1,320 1,980 feet

imagery = CIR, 4/16/09, 1ft

SFWMD area of detail



IMPORTANT DISCLAIMER: This map is a conceptual or planning tool only. The South Florida Water Management District does not guarantee or make any representation regarding the information contained herein. It is not self-executing or binding, and does not affect the interests of any persons or properties, including any present or future right or use of real property.

80.9083°

80.9°

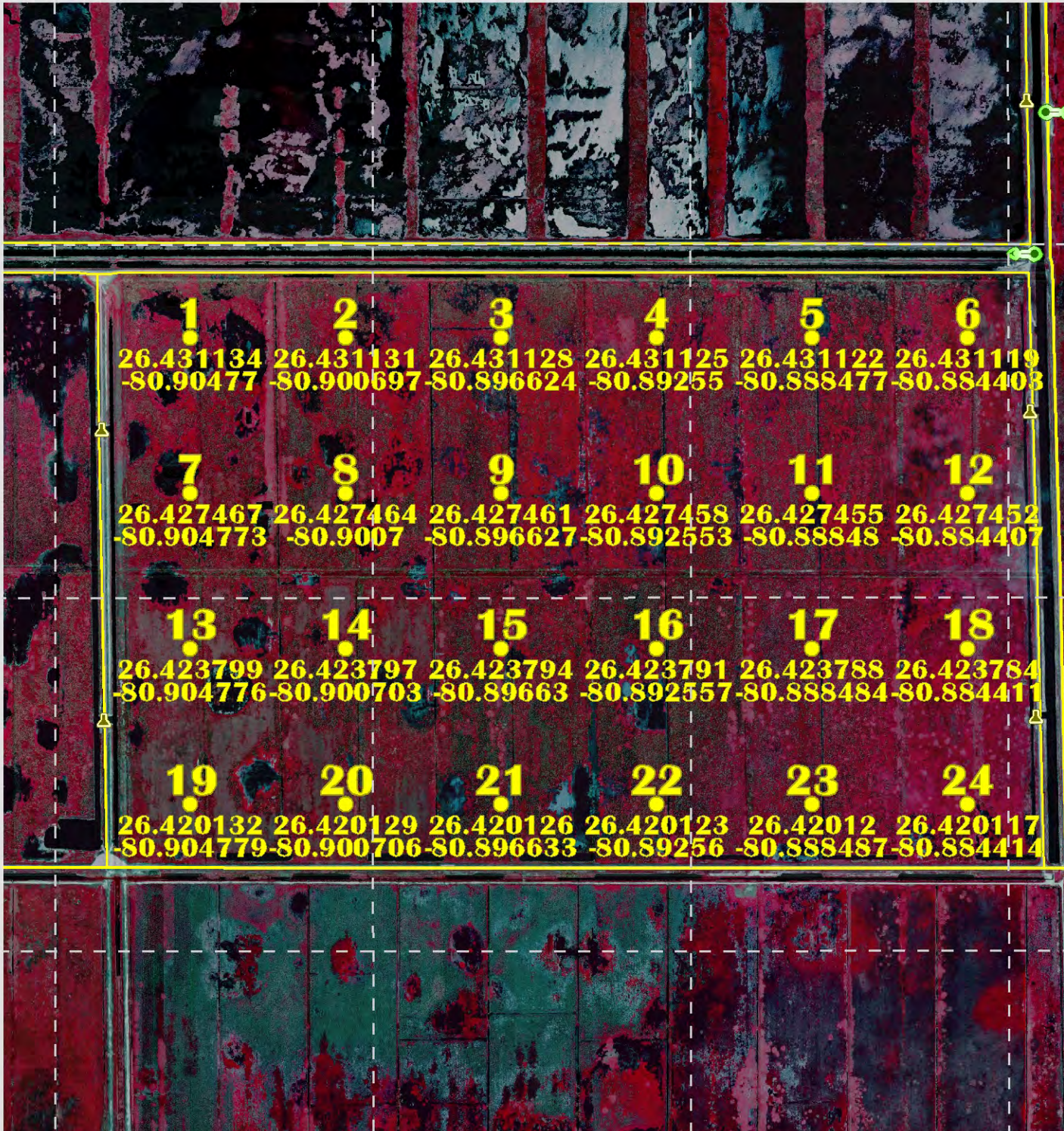
80.8917°

80.8833°

26.4333°

26.425°

26.4167°



Vegetation and Land Management Department  
**Vegetation Management Division**



**STA 5  
Cell 3B**

**Soil Sampling Points**



**Culvert**



**Pump**



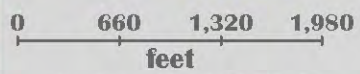
**Spillway**



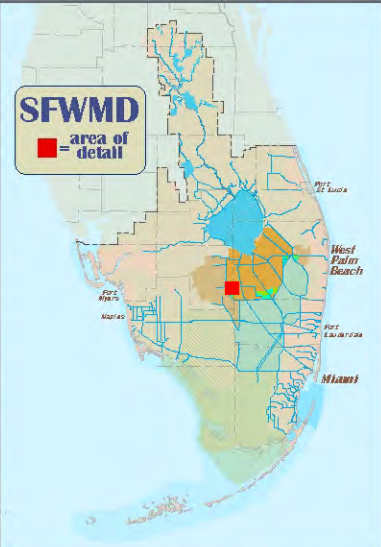
**Weir**



**STA/cell boundary**



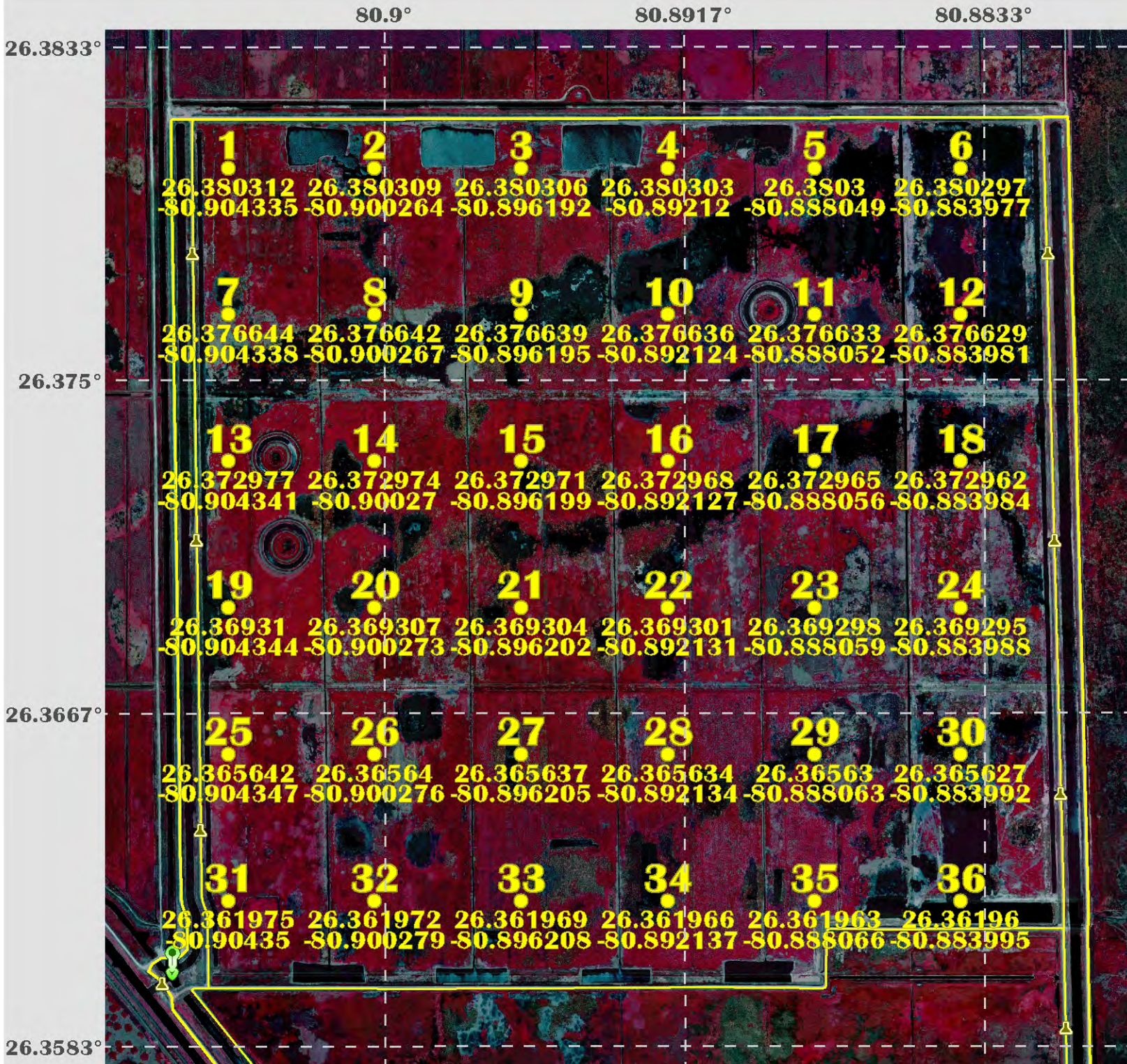
imagery = CIR, 4/16/09, 1ft



**IMPORTANT DISCLAIMER** - This map is a conceptual or planning tool only. The South Florida Water Management District does not guarantee or make any representation regarding the information contained herein. It is not self-executing or binding, and does not affect the interests of any persons or properties, including any present or future right or use of real property.

\\wad.sfwmd.gov\DFSRoot\Data\ez\_support\business\STA\STA\_GIS\GIS\_Facilities\SamplePoints





# STA 6 Section 2

**Soil Sampling Points**

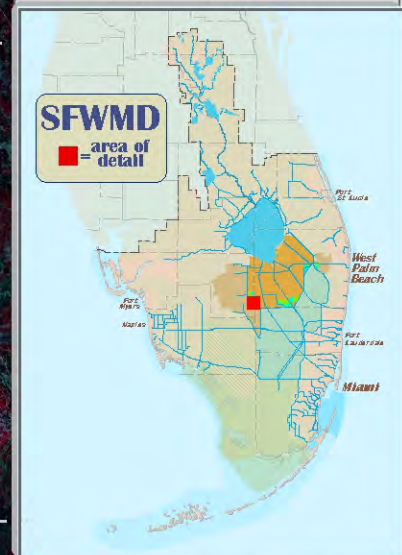
**Culvert** **Pump**

**Spillway** **Weir**



**STA/cell boundary**

0 660 1,320 1,980  
feet  
imagery = CIR, 4/16/09, 1ft



**IMPORTANT DISCLAIMER** - This map is a conceptual or planning tool only. The South Florida Water Management District does not guarantee or make any representation regarding the information contained herein. It is not self-executing or binding, and does not affect the interests of any persons or properties, including any present or future right of use of real property.

80.8944°

80.8889°

80.8833°

26.35°

26.3417°

26.3333°

Vegetation and Land Management Department



Vegetation Management Division

STA 6 Cell 3

Soil Sampling Points



Culvert



Pump



Spillway



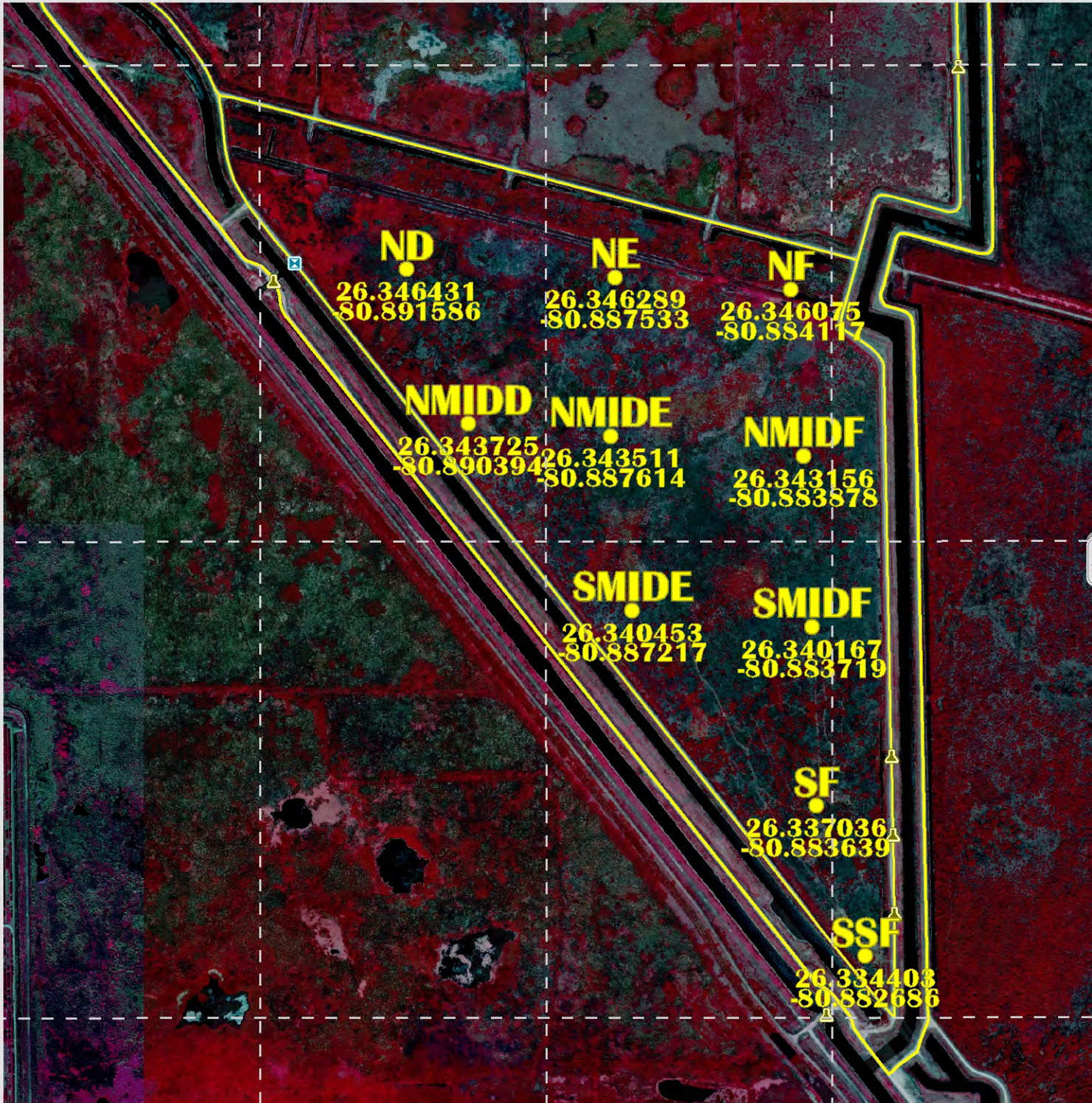
Weir



STA/cell boundary

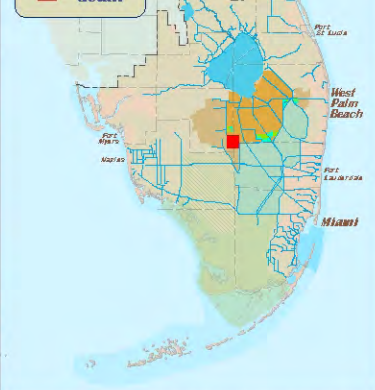
0 660 1,320 feet

imagery = CIR, 4/16/09, 1ft

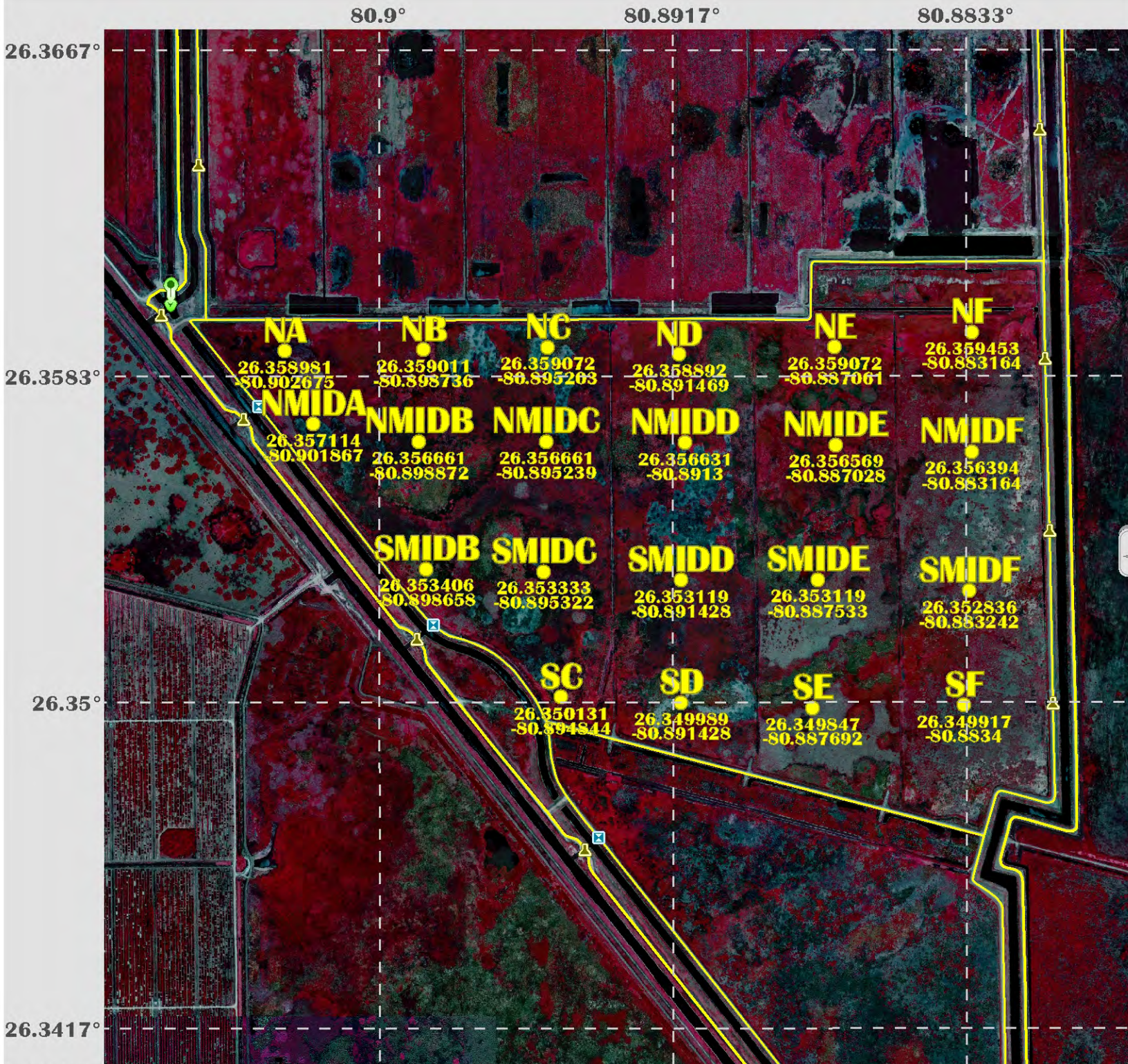


SFWMD

area of detail



IMPORTANT DISCLAIMER: This map is a conceptual or planning tool only. The South Florida Water Management District does not guarantee or make any representation regarding the information contained herein. It is not self-executing or binding, and does not affect the interests of any persons or properties, including any present or future right of use of real property.



# STA 6 Cell 5

**Soil Sampling Points**

**Culvert**

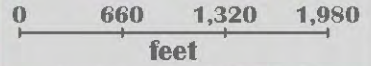
**Pump**

**Spillway**

**Weir**



**STA/cell boundary**



imagery = CIR, 4/16/09, 1ft

