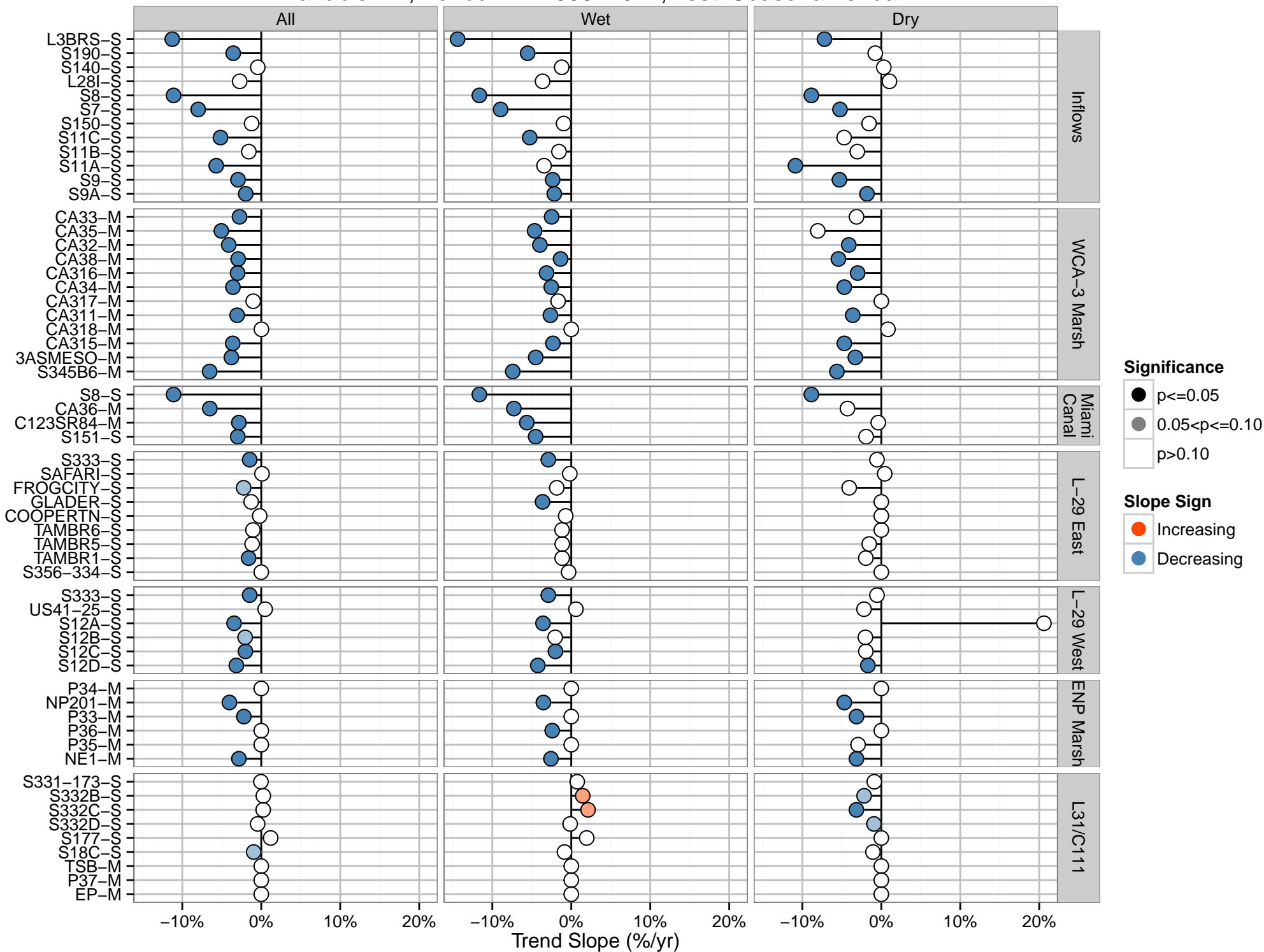
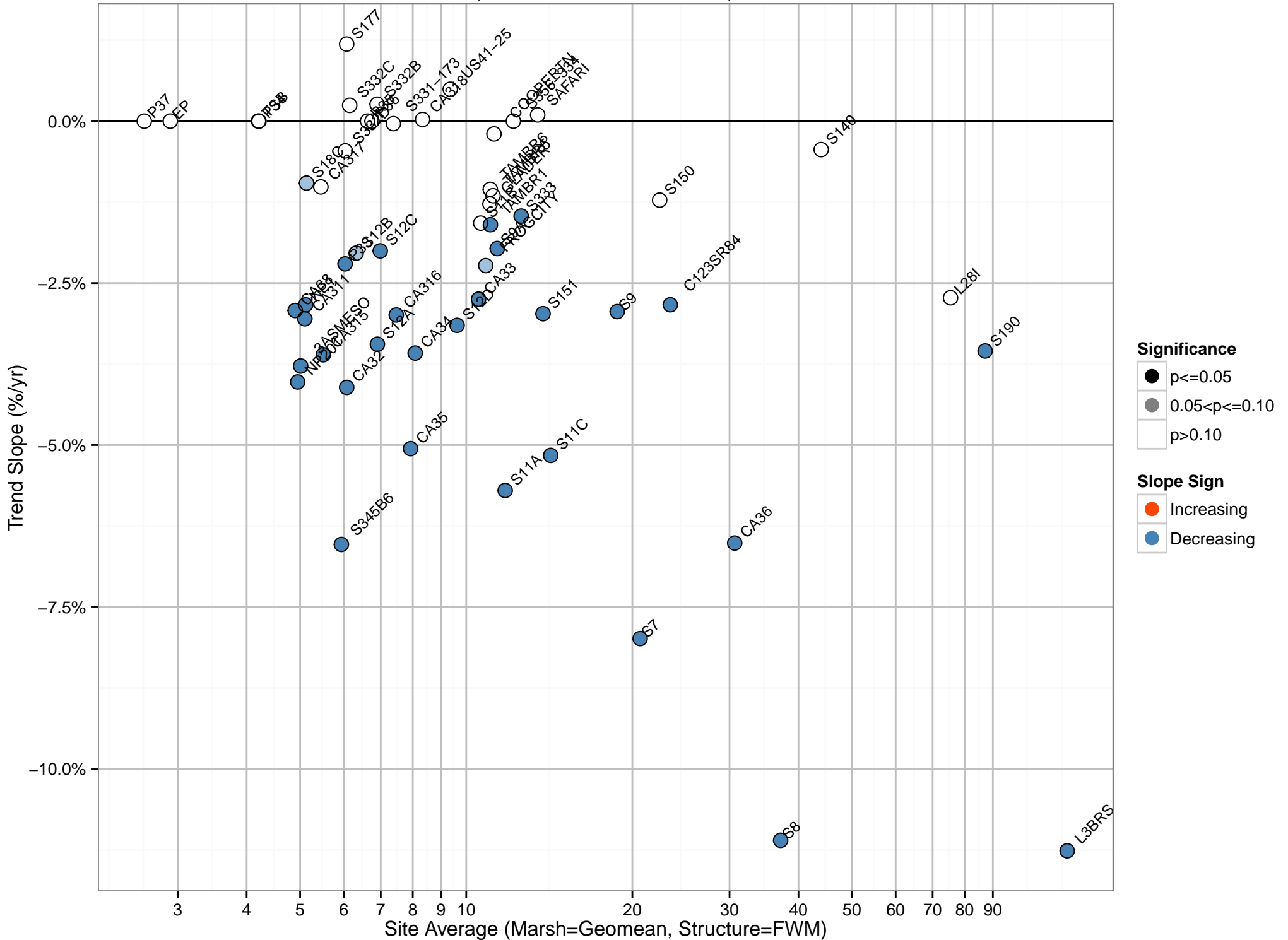


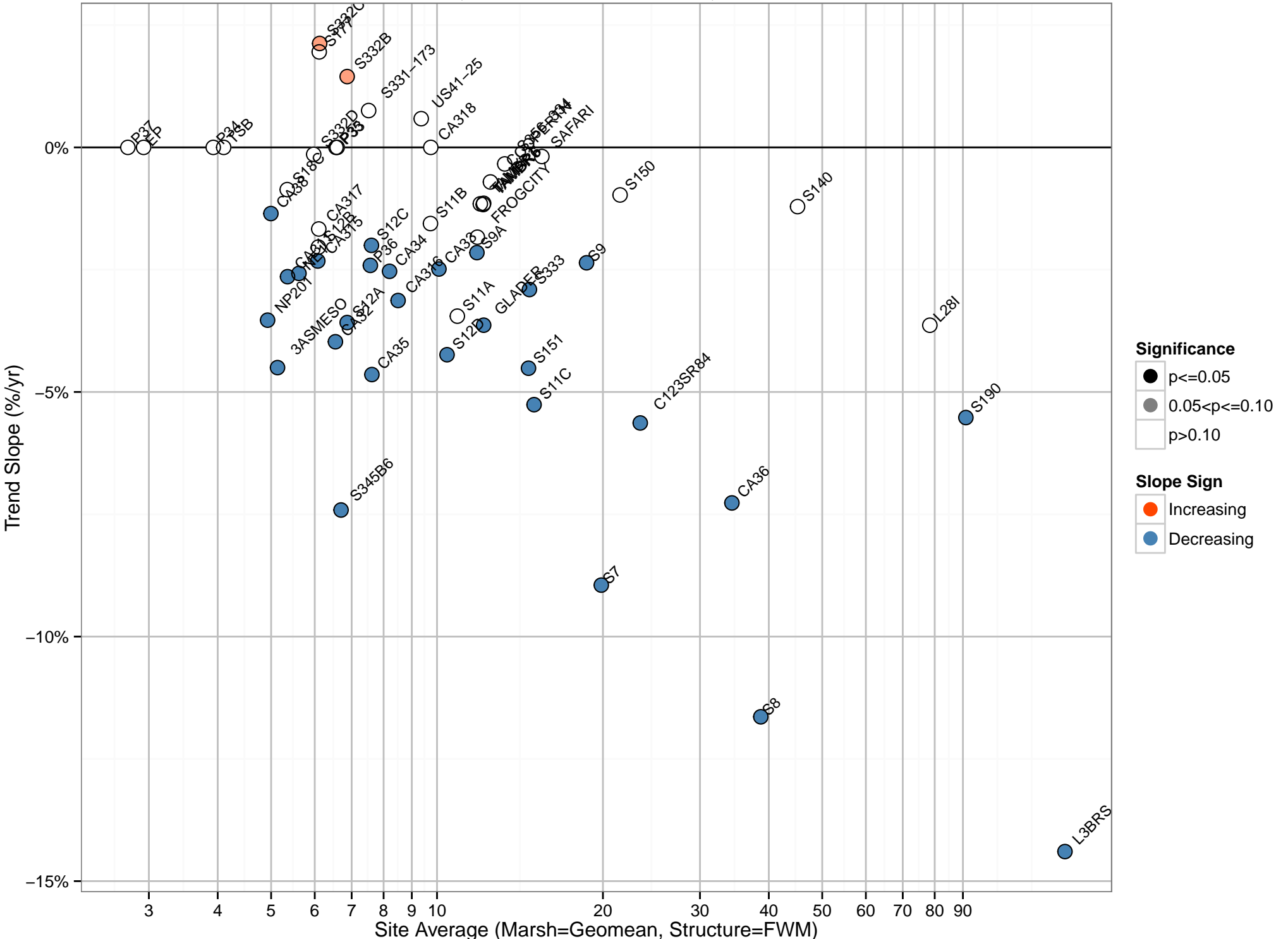
Trend Magnitudes and Significance (Marsh Sites = Geomean, Structure Sites = FWM)
 Variable: TP, Period: WY2003–2014, Test: SeasonalKendall



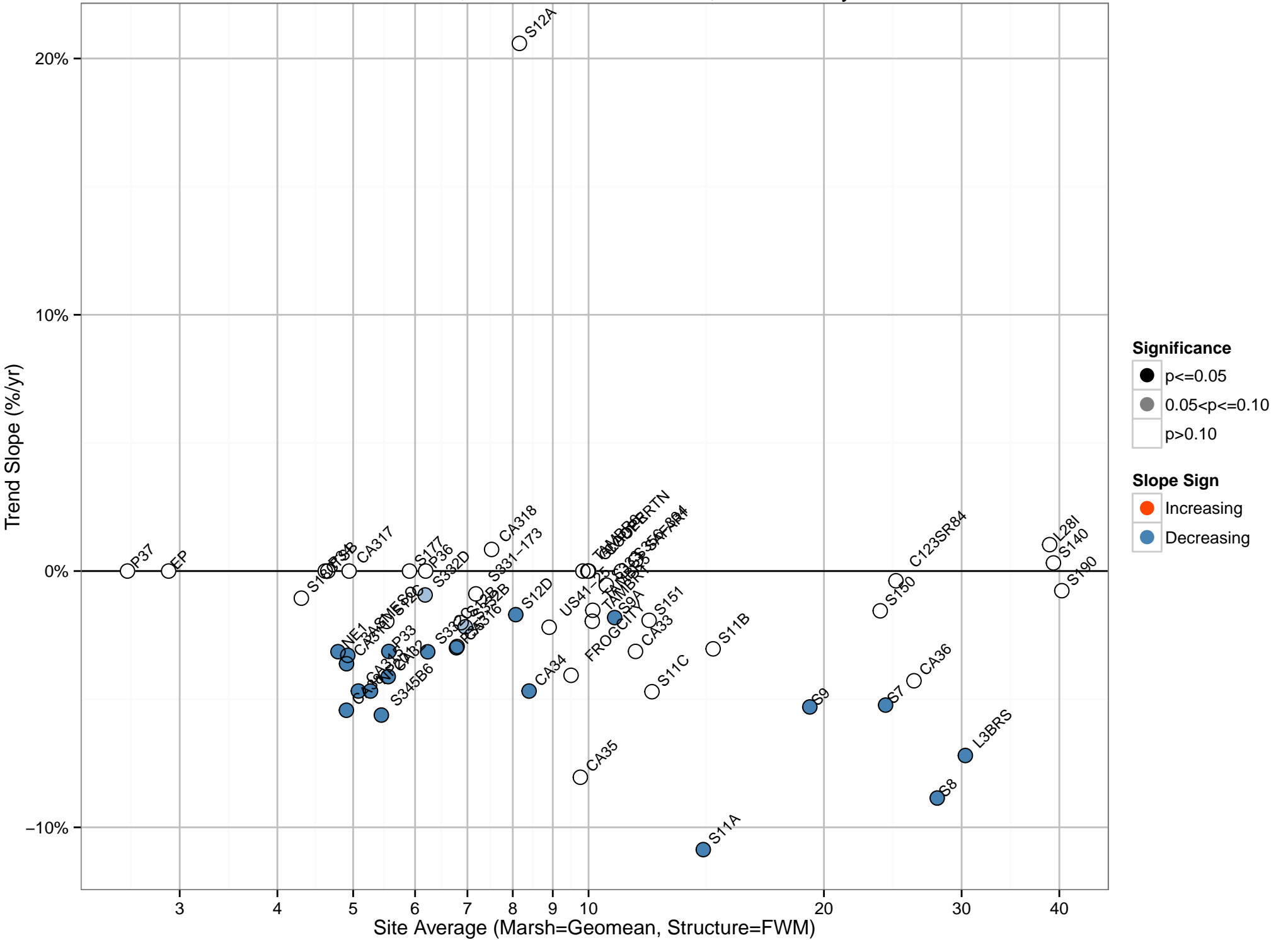
Comparison of Trend Slope versus Site Average Concentration
 Variable: TP, Period: WY2003–2014, Season: All



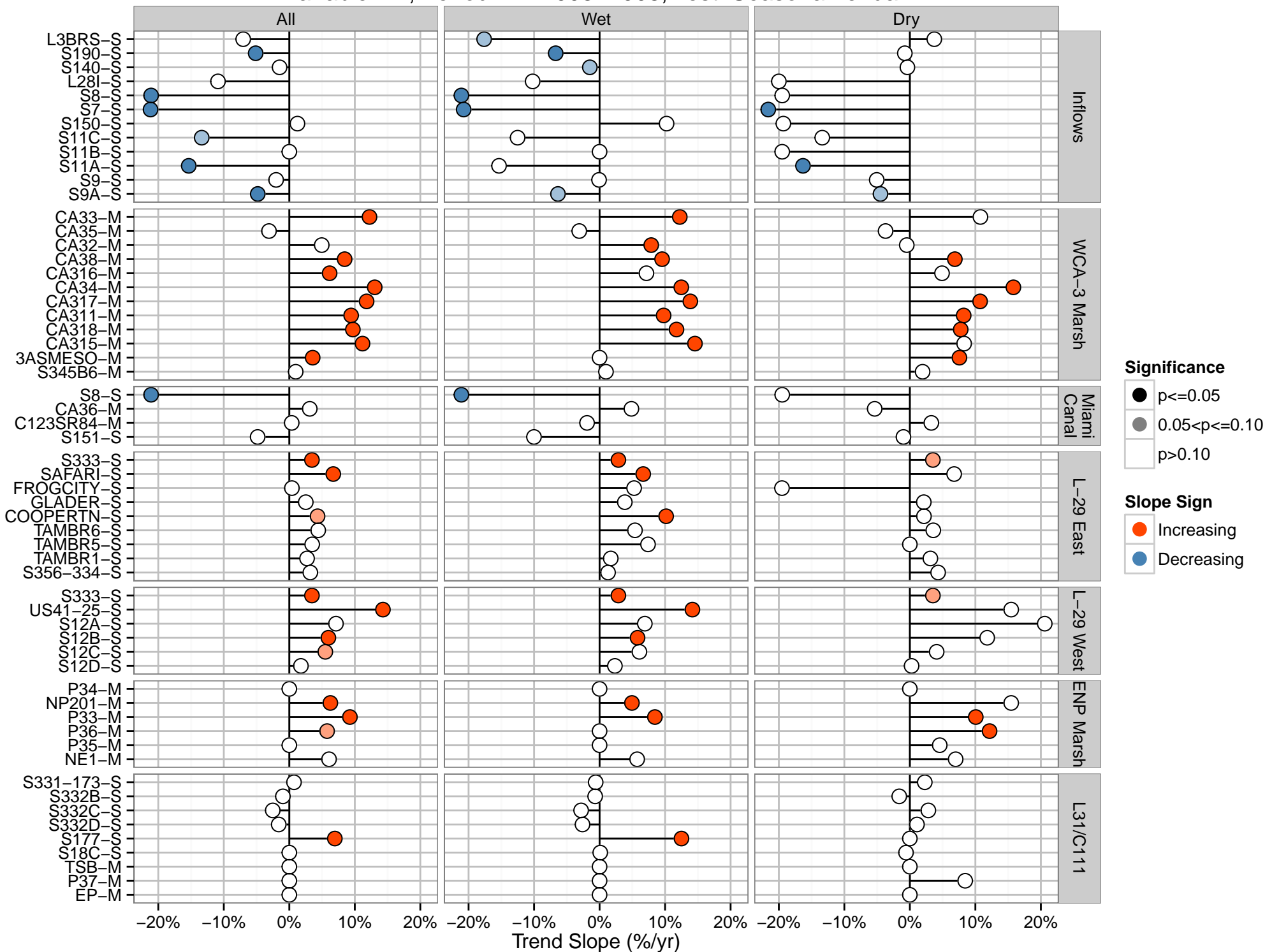
Comparison of Trend Slope versus Site Average Concentration
 Variable: TP, Period: WY2003–2014, Season: Wet



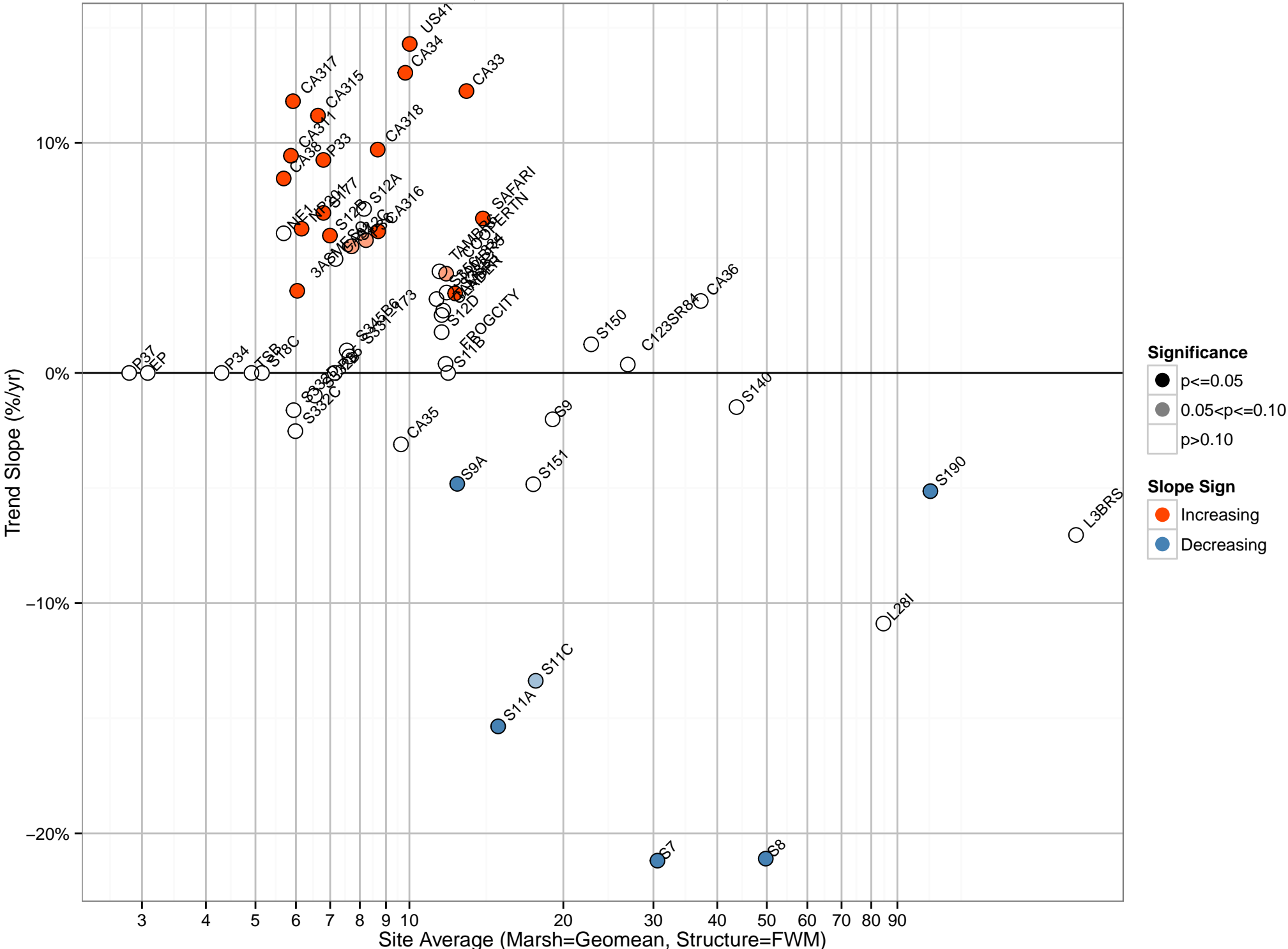
Comparison of Trend Slope versus Site Average Concentration
 Variable: TP, Period: WY2003–2014, Season: Dry



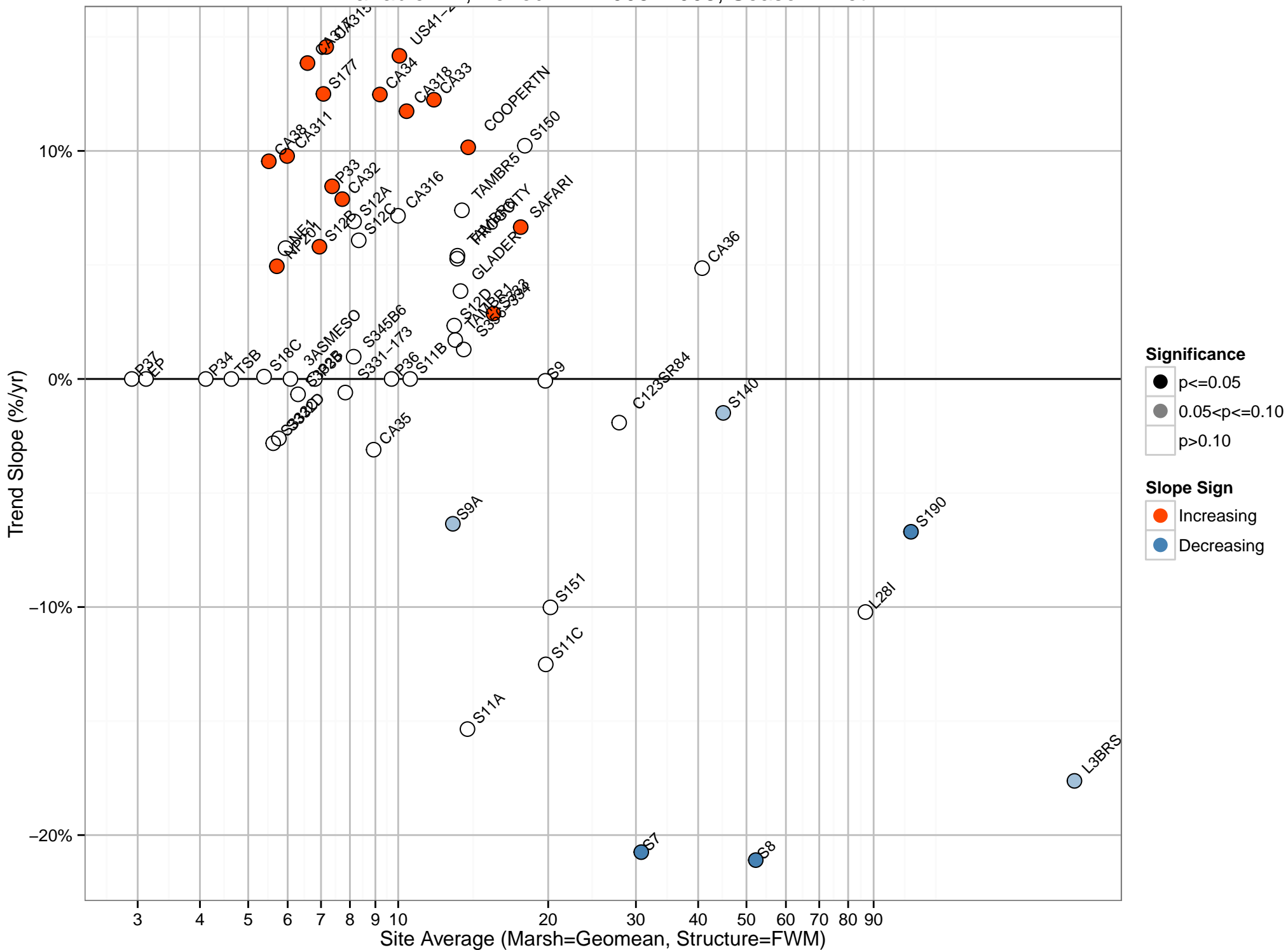
Trend Magnitudes and Significance (Marsh Sites = Geomean, Structure Sites = FWM)
 Variable: TP, Period: WY2003–2008, Test: SeasonalKendall



Comparison of Trend Slope versus Site Average Concentration
 Variable: TP, Period: WY2003–2008, Season: All

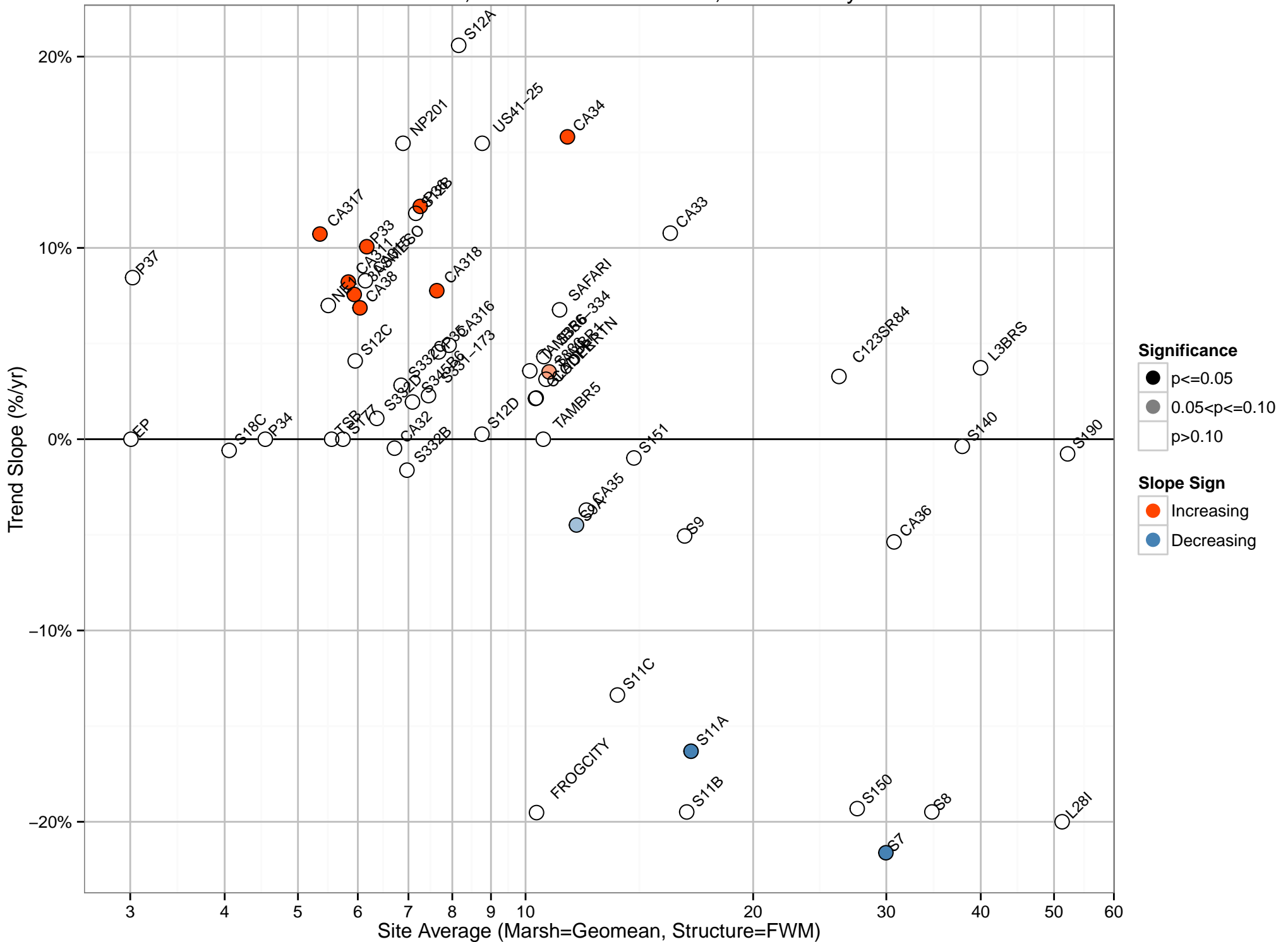


Comparison of Trend Slope versus Site Average Concentration
Variable: TP, Period: WY2003–2008, Season: Wet

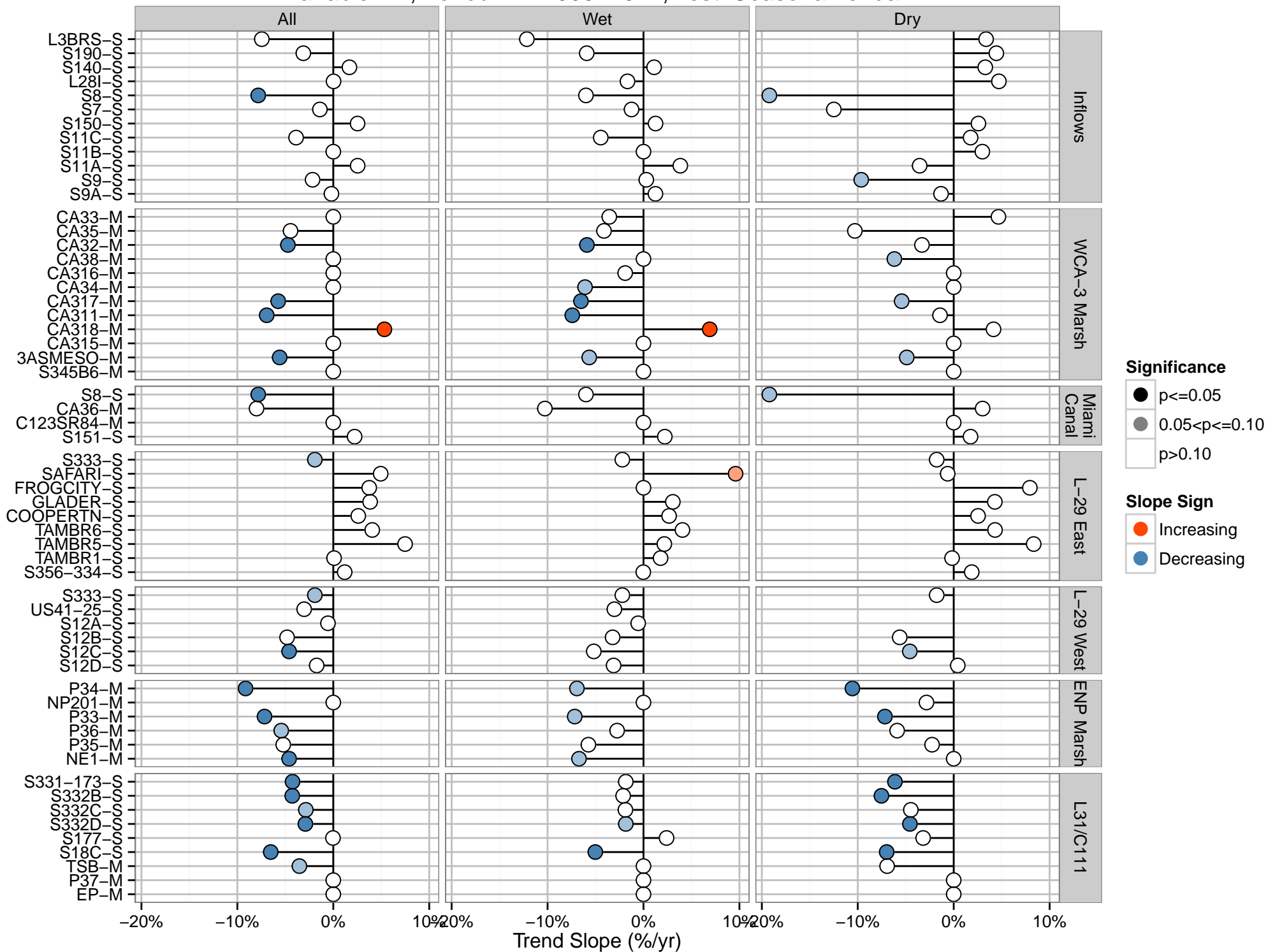


Comparison of Trend Slope versus Site Average Concentration

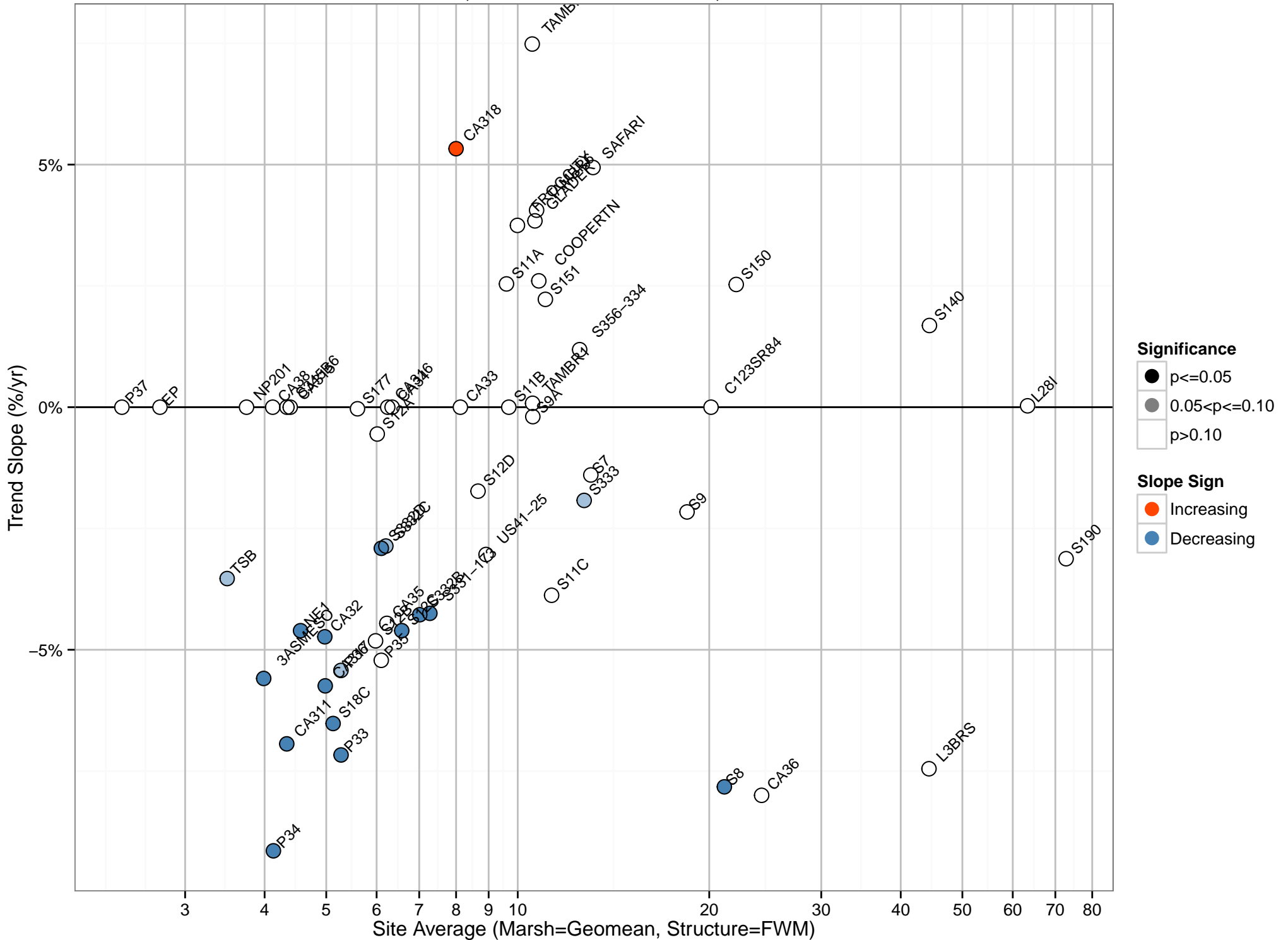
Variable: TP, Period: WY2003–2008, Season: Dry



Trend Magnitudes and Significance (Marsh Sites = Geomean, Structure Sites = FWM)
 Variable: TP, Period: WY2009–2014, Test: SeasonalKendall

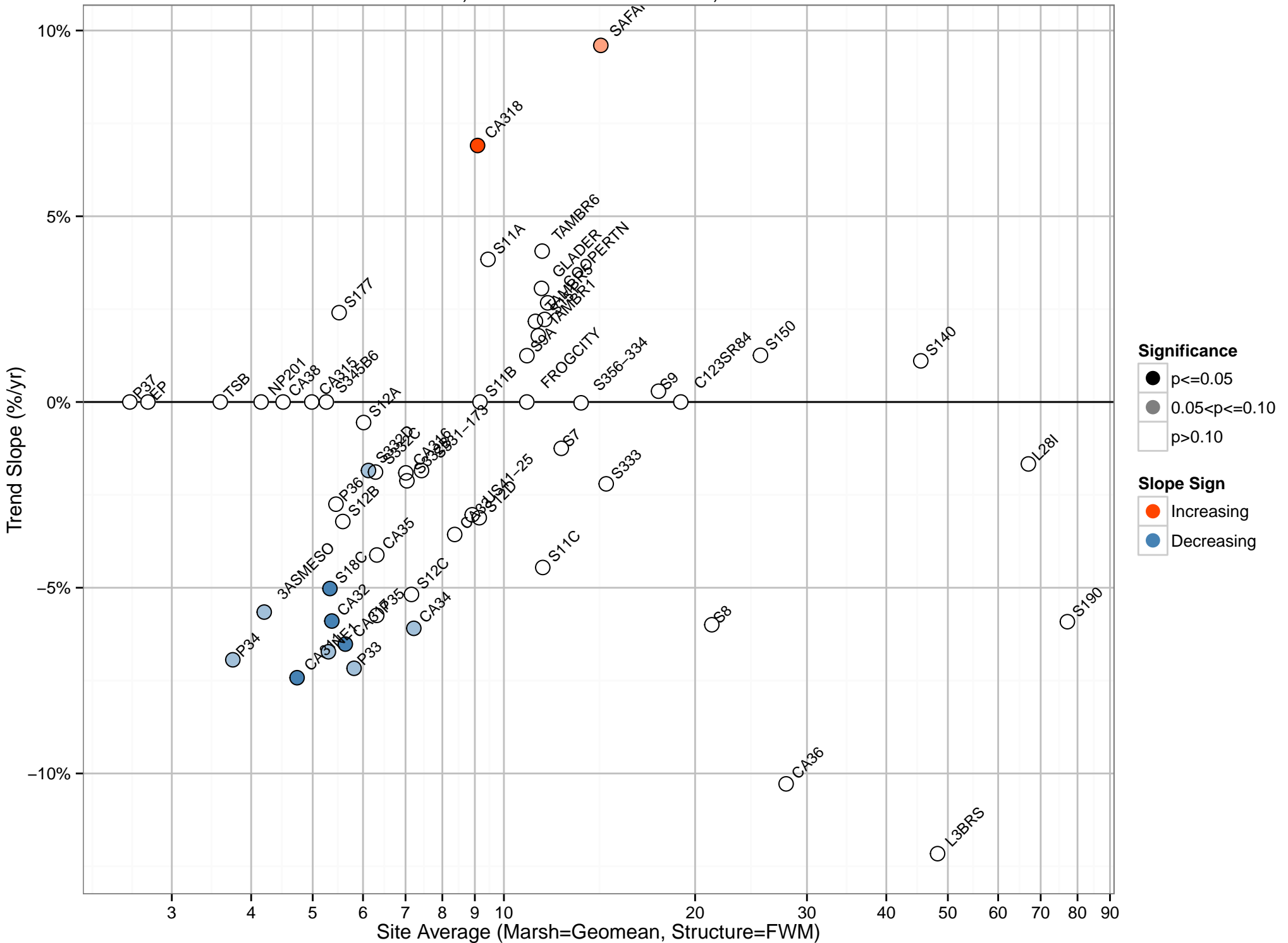


Comparison of Trend Slope versus Site Average Concentration
 Variable: TP, Period: WY2009–2014, Season: All



Comparison of Trend Slope versus Site Average Concentration

Variable: TP, Period: WY2009–2014, Season: Wet



Comparison of Trend Slope versus Site Average Concentration
 Variable: TP, Period: WY2009–2014, Season: Dry

