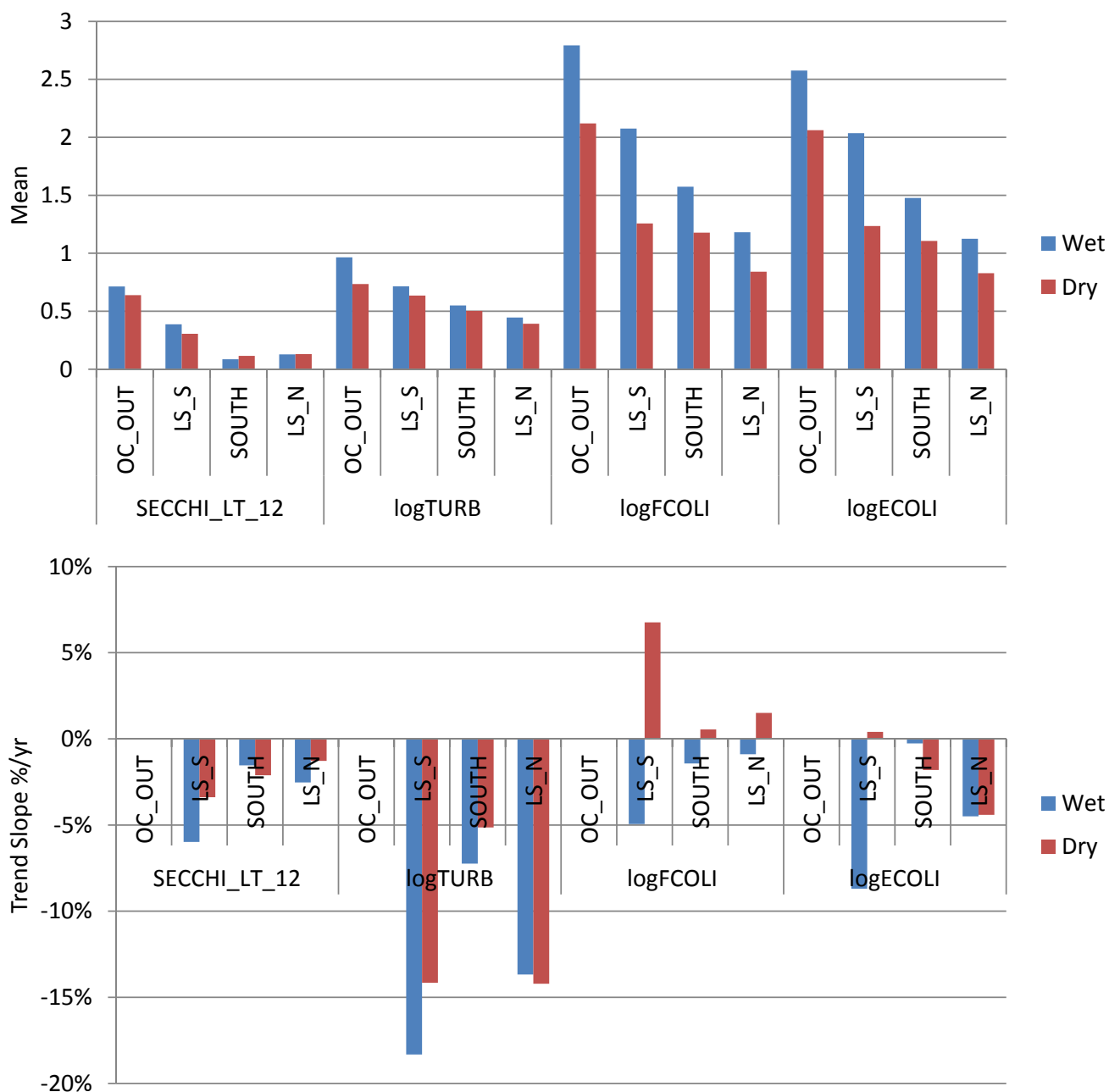


Means and Trend Slopes by Variable, Lake Region, & Weather, 1999-2010



Trend Slopes = percent of long-term geometric mean per year (% of weekly values per year for Freq Secchi < 1.2 m)

Onondaga Creek Outlet Site (OC_OUT) was sampled in 2008-2010 (trends not tested).

Stations sorted in south-north direction. LS_N = northern nearshore; LS-S = southern nearshore; SOUTH = South Deep.